



**CAMP
MAK-A-
DREAM**

THE DREAMCATCHER

CAMP MAK-A-DREAM ★ GOLD CREEK, MONTANA

OUR MISSION

Camp Mak-A-Dream provides a medically-supervised, cost-free Montana experience, in an intimate community setting, for children, young adults and families affected by cancer.

2013 SCHEDULE

Programs are offered FREE of cost.

May 2-6

Ovarian Cancer Retreat – Spring
Women diagnosed with ovarian cancer.

June 2-8

Young Adult Conference (ages 18-40)
Young adults diagnosed with cancer.

June 11-17

Heads Up Conference (ages 18-25)
Young adults diagnosed with a brain tumor.

June 20-26

Teen Camp (ages 15-18)
Teenagers diagnosed with cancer.

July 2-7

Siblings Camp (ages 6-12)
Siblings and children of cancer patients.

July 11-16

Siblings Camp (ages 13-17)
Siblings and children of cancer patients.

July 19-25

Kids Camp (ages 6-14)
Children diagnosed with cancer.

July 29 – August 4

Teen Heads Up Conference (ages 13-18)
Teenagers diagnosed with a brain tumor.

September 5-9

Ovarian Cancer Retreat – Fall
Women diagnosed with ovarian cancer.

September 12-16

Women's Cancer Retreat
Women diagnosed with any type of cancer.

For more information and applications,
visit www.campdream.org.



My name is Chris. I am a 27-year-old survivor; post cancer and post stem cell transplant. During the course of my treatment, I was blessed with the opportunity to attend the Young Adult Conference (YAC) several summers ago.

Camp Mak-A-Dream changed my life.

My family told me that I was a different person when I returned from Camp. I had always been a fairly positive and upbeat patient throughout my treatment, but nine years of hospital exposure can wear even the best patients down. Camp was my first experience to see and meet other people just like me in a nonhospital setting. What I experienced in that week was truly amazing. I was able to make a second trip and again I experienced life-changing events. I was able to revisit with past YACers and meet new YACers as well. But we also learned that some were lost and hearing that was difficult to relive, but Camp was the best place to deal with the news. We honored their passing with fond memories and tributes at a memorial service. I feel so blessed to have experienced Camp twice in my life. My memories and experiences from Camp are still held close to my heart.

Chris Dulac, Washington, D.C.



MEETING THE NEEDS OF SIBLINGS

In order to meet rising demand, we are offering two Siblings Camps in 2013. Siblings Camp is a unique experience for children and teenagers who have (or have lost) a sister, brother or parent with cancer. We believe young people dealing with the diagnosis (or loss) of a loved one with cancer need a chance to meet others their own age who understand what they are going through and, for a time, to be the center of attention.



This summer's first Siblings Camp is for children ages 6-12; the second is for teenagers ages 13-17. Offering two sessions lets us welcome more campers and design programs specific to the needs of each group.

Younger campers will get a chance to challenge themselves on the climbing wall or zip line, try a new craft in the art studio, go horseback riding and just be kids. The session for older siblings will combine the usual camp fun — like swimming, archery, dances and high ropes — with activities that embrace the teen experience. During Cabin Chat, sibling campers will have time and space to talk about how it feels to be the only kid in school to have a sibling or parent with cancer. Through these discussions campers not only get to share their emotions, they learn that others their own age have faced and come through the same challenges.

Siblings Camp is designed to give kids and teens a week of normalcy; a week to make new friends, try new things and just be themselves.



CHECK OUT OUR NEW WEBSITE

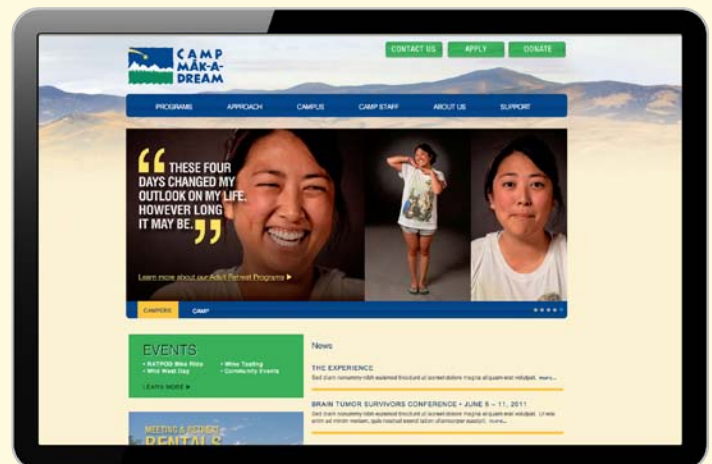
In an effort to make our site more informative and easier to use, we reinvented it.

Now when you visit www.campdream.org, you'll find new features like our most-recent video and an interactive campus map. You'll be able to view program-specific details from calendar dates to sample menus to what-to-bring lists. You'll find it easier than ever to download camper applications, health forms, volunteer applications, travel scholarship information and more. And you can quickly learn about upcoming fundraising events or how to go about renting Camp for a group, business or family function.

If you visit from your smartphone or tablet, you'll also notice something else about the new site. It's responsive, which means it works and functions on pretty much any mobile device — making it convenient to contact us, download a form or share our video with your friends when you're on the go.

More than anything, though, the new site reflects what it means to be at Camp. It's loaded with great photos of campers, campus and activities. It includes heartfelt quotes from participants. A visit to the new site is almost like a visit to Camp Mak-A-Dream itself.

Also find us on .



FOUNDERS' CORNER: 20TH SEASON CELEBRATION COMING IN 2014

As we begin preparations for the summer of 2014 20th anniversary celebrations for Camp Mak-A-Dream, we think about and thank our founders, Harry and Sylvia Granader. Led by Harry and totally supported by Sylvia, the Granaders donated their time, energy and ranch lands to create this camp space. They wanted kids with cancer to know a Montana ranch experience; they wanted kids with cancer to feel some of the healing that is possible with time spent relaxing among trees and mountains and big open skies.

Camp Mak-A-Dream started in July of 1995 with one week of camp for kids with cancer. Today we offer 10 camps — each specific for kids, teens, young adults or adults with cancer, as well as for siblings and children of cancer patients. And we offer diagnosis-specific sessions for brain tumor and ovarian cancer patients and survivors.

We continue to draw inspiration from both Sylvia (who lives in Michigan and visits as often as she can) and the late Harry, whose dream lives on in Gold Creek.



Now entering our 19th summer, Camp has welcomed campers from 49 states (we're just missing Hawaii if you know someone who would like to attend camp) and nine countries.

Next year will mark Camp's 20th season of providing medically supervised, cost-free programs for kids, young adults and families affected by cancer. We couldn't be more grateful for everyone who has helped make this possible. Thank you!

Memorial Garden

Lena Belcourt
Missoula, Mont.
August 2012

Trent Bengel
Westphalia, Mich.
January 2013

Marianne Black
Huntington Beach, Calif.
November 2012

Robin Bray
Orland, Maine
February 2013

William "Will" Canan
Rochester, Minn.
October 2012

Martha Garcia
Baldwin Park, Calif.
January 2012

Marti Hughes
Columbus, Ohio

Sally Jekanowski
Hadley, Mass.
May 2012

Rebecca "Brandy" Sanford-Bean
Longview, Wash.
December 2011

Barbara Simon
Kalispell, Mont.
December 2012

Kimberly Westrate
Holland, Mich.
October 2012

Jillian Zaveloff
Bordentown, N.J.
February 2013

WELCOME KATHY DELUDE!

Camp is happy to announce that Kathy DeLude joined us in January as food service & rental manager. Kathy grew up in Helena, Montana, and worked in a variety of other professions before she (finally) attended culinary school and, she says, found her passion.

Kathy loves to travel (she calls Vietnam her home away from home), collect and restore antiques, shop in huge supermarkets to find out what's new out there and spend time at the beach.

We are glad to have her with Camp!



PRESIDENT'S MESSAGE

Dear Friends of Camp Mak-A-Dream:

While assisting with a high ropes course at Camp a few summers ago, a teenage cancer survivor asked me a most profound and life-changing question: "What is the point of being alive if you don't do something remarkable?" I often wonder if I have ever done anything "remarkable." Every time I ask myself that question, I can always point to one constant remarkable thing I have done — volunteer my time and resources to Camp Mak-A-Dream so I can help a child make his life remarkable.

This past year Camp Mak-A-Dream went through some changes that will keep us dreaming long into the future. Our executive director for more than seven years, Dr. Stu Kaplan, returned to St. Jude Children's Research Hospital to continue his work in pediatric oncology and the long-term effects of cancer therapy. From his address in Memphis, Dr. Kaplan remains connected as Camp's medical committee director. With Dr. Kaplan's departure, the board conducted a thorough nationwide search for a new executive director. The response was overwhelming; after reviewing many exceptional candidates, the board knocked it out of the park hiring Laura Bianco-Adams, who officially started in December 2012. With Laura, and our already exceptional staff and strong board, we have no doubt the future of Camp is very bright.

As my term as board president ends this November, I, now more than ever, am reminded that we must be remarkable in order to change lives one week at a time. On behalf of everyone here, **thank you for your support** — for sharing your talents and resources so we may be remarkable by extending time, fostering hope and continuing to dream big.

With your continued support we promise to do remarkable things every day and to beat cancer, one week at a time.

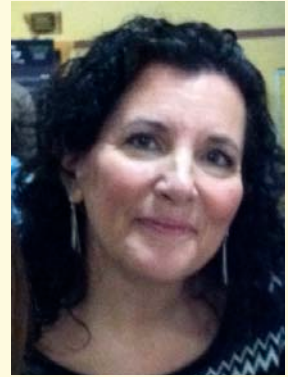
Dream Big. — *William E. McCarthy, Board President*



EXECUTIVE DIRECTOR'S REPORT

I am so honored to join Camp Mak-A-Dream as its new executive director.

I moved to Montana nearly 20 years ago, due in large part to the breathtaking beauty, both of its people and of its landscape. Affectionately known as "The Last Best Place," Montana comprises many jewels, and Camp is definitely one of them! People from all over the country, and the world, have been impacted by the beauty and spirit of Camp Mak-A-Dream. And that impact doesn't just last for a week, it lasts for weeks and months and years to come. For all that we have been, and for all that I know we will become, I am grateful to be a part of Camp's story!



Laura Bianco-Adams, Executive Director

CAMP MAK-A-DREAM 2013 BOARD OF DIRECTORS

**Executive Committee Members*

Dee Dee Blaney,* First American Title Co. of Montana

Mike Juhola, Montana National Guard

Jordan Lind,* Clearas

Doug McAlear,* Loan Officer / Referee

Will McCarthy,* Worden Thane, PC

Margot O'Leary,* Avalon Consulting Group, Inc.

Dan Ortt,* Ortt Financial, Inc.

Stan Seagraves, M.D., Providence St. Patrick Hospital

Paula Short, Western Montana Radio / U.S. Forest Service

Bill Simmel,* Jackson Contractor Group, Inc.

Mike Tobiason,* Anderson-Zurmuehlen

Anne Wright,* Providence St. Patrick Hospital

FOUNDATION STAFF

Laura Bianco-Adams, Executive Director

Meredith Baird, Administrative Assistant

Jennifer Benton, Marketing & Special Events Director

Shelley Cooper, Office Manager

Meredith Daviess, Program Assistant

Kathy DeLude, Food Service & Rental Manager

Renee Dutton, Hospitality Coordinator

Julie Hiett, Finance Director

Shirley Hummer, Recruitment & Medical Coordinator

Beth Jones, Camp Director

Mike Philpot, Facility Assistant

Jake Wood, Facility Manager

HOW YOU CAN HELP

For more information, call our office at (406) 549-5987, visit our website: www.campdream.org, email us at: info@campdream.org or see the form on the back of this newsletter.

Host a Dream Tour in Your Area

Are you a proud supporter of Camp Mak-A-Dream? Consider hosting a Dream Tour (a virtual tour of Camp Mak-A-Dream) in someone's home, a community center or anywhere with a DVD player.

Organize a Community Event

From lemonade stands to walk-a-thons, we appreciate the grassroots support! A great example is the senior project coordinated by mother-daughter team Bev and Riley Williams, along with the Missoula Super Skippers jump rope club. More than 80 kids attended a special one-day clinic to benefit Camp. The event raised \$1,600 – enough to sponsor three campers this summer!

Provide a Week of Camp

Sponsor a child or young adult for a cost-free week of camp with a \$500 "Campership" donation.

Honor a Loved One

Make a donation in memory of a loved one or in honor of a special occasion. Camp Mak-A-Dream will send a card to the family or honoree.

Include Camp in Your Estate Planning

Esta Owen knew she wanted to impact kids at Camp Mak-A-Dream long after she was gone. Even though she passed away in 2011, by naming Camp as a beneficiary, Esta continues to provide special activities for kids and siblings. Supporting Camp through an insurance policy, annuity, trust or will is easy. Ask your professional advisor or contact Legacy Montana: www.legacymontana.org.



Display Our Literature

Help us get the word out to campers, volunteers and donors by displaying posters or brochures at your business or office.

Check Out Our Wish List

You can help a lot by donating an item from our wish list, found in this newsletter and on our website.

Invite Us to Your Civic Organization or Business Meeting

If you're a member of a civic organization or would like to hear about Camp at your next business meeting, please contact us.

Volunteer

Spend the most incredible week imaginable by volunteering at Camp. You must be at least 18 years of age to apply. Applications are available on our website.

Rent Our Facility

Rent the beautiful Camp Mak-A-Dream facility, from late August to mid-May, for your next gathering or meeting.

Donate Frequent Flyer Miles

Donating frequent flier miles helps bring a child or young adult to Camp or bring speakers to conduct workshops.

Donate Unused Ad Space

If your business has ad space in a newspaper or magazine, donate that space for Camp Mak-A-Dream to run an ad.

Corporate Matching Gifts

Many companies have a matching gift program that will match all or a portion of employees' donations to charitable organizations. Ask if your company offers a matching gift program, and if so, how you can obtain a form to make your donation go even further.

2012

376 TOTAL CAMPERS

including

171 FIRST-TIME CAMPERS

from

38 STATES

and

3 COUNTRIES

participated in

10 DIFFERENT PROGRAMS

supported by

200 VOLUNTEERS

awarded

56 TRAVEL SCHOLARSHIPS

In addition to our valued volunteers, Camp benefited from the generous support received through contributions, memorials, special events, grants, facility rental revenue and in-kind donations.

THANK YOU!

2013 SPECIAL EVENTS

Proceeds from these fine – and fun! – events benefit Camp Mak-A-Dream.



12TH ANNUAL RATPOD

June 29, 2013

BIG HOLE VALLEY, MONT.

- ★ 130-mile bicycle ride around the Pioneer mountains, starting and ending at UM-Western in Dillon
- ★ Riders pay a registration fee and are asked to raise at least \$100 for Camp Mak-A-Dream
- ★ Grand prizes awarded to the riders who raise the most money
- ★ To sponsor a rider, make a general donation or learn more, please visit: www.ratpod.org

DAIRY QUEEN — BLIZZARD BENEFIT DAY

July 28, 2013 5 - 11 p.m.

1735 S. HIGGINS STREET, MISSOULA, MONT.

- ★ Dairy Queen in Missoula will donate a portion of each Blizzard sold to Camp
- ★ Make a difference, have fun and eat a delicious ice cream treat – what could better than that

MONTGOMERY DISTILLERY – MOSCOW MONDAY

August 12, 2013 Noon - 8 p.m.

129 W. FRONT STREET, MISSOULA, MONT.

- ★ Montgomery Distillery is the new hot spot in Missoula for hand-crafted Vodka & Gin
- ★ This event for guests ages 21+ who enjoy fine spirits & want to support a great cause
- ★ \$1 of every cocktail sold will be donated to Camp Mak-A-Dream



2013 SPONSORS

PLATINUM



partnerscreative



GOLD



SILVER

Active Physical Therapy • Advanced Imaging • Barrett Hospital & Healthcare • Big Sky Brewing Co. • Campus Drive • C.N.A. Foundation
Community Medical Center • Farmers State Bank • Five Valleys Urology • Great Harvest Bread Co. • Merrill Lynch WS Group
Missoula Surgical Associates • Monida Healthcare • Sapphire Physical Therapy
Stryker Orthopaedics • Western Montana Medical Society

ADDITIONAL IN-KIND SUPPORT:

Hands in Motion Occupational Therapy • Missoula Alliance Church • Missoula Nissan • Patagonia Outlet Store – Dillon • Subway – Dillon



WALLEYE BENEFIT FISHING TOURNAMENT August 3, 2013

CANYON FERRY RESEVOIR – HELENA, MONT.

- ★ Walleye fishing tournament, entry fee \$60 per boat (100 boat limit)
- ★ For more information or to enter, contact tournament director Peggy Lawver at (406) 855-8432
- ★ Visit: www.walleyesforever.com and www.pikemasters.com for more on these two clubs



GOLD CREEK WILD WEST DAY September 28, 2013

CAMP MAK-A-DREAM FACILITY – GOLD CREEK, MONT.

- ★ Family-friendly Western-themed day at Camp Mak-A-Dream
- ★ Includes BBQ dinner & tons of fun activities — like sapphire mining, old-time photos, poker, roping contest, cowboy campfire songs and much more
- ★ For reservations or more information, call (406) 549-5987 or visit: www.campdream.org

For additional information on any of these events, or for information on what you can do to support Camp Mak-A-Dream in your own community, please contact Jennifer Benton at (406) 549-5987 or email: jennifer@campdream.org.

CAMP MAK-A-DREAM 2013 WISH LIST

There are lots of everyday items needed at Camp. If you would like to donate something from our wish list, you can drop it by our foundation office in Missoula, or mail it to us at: Camp Mak-A-Dream, P.O. Box 1450, Missoula, MT 59806-1450. Donations may also be tax deductible. Please contact us at (406) 549-5987 for more information or with questions.

Art Studio

Nylon, hemp, silk, lanyard & leather cord for jewelry making • Sharpie pens and markers in assorted colors • Glass beads • Jewelry-making tools & findings • Paint brushes (various sizes) • Acrylic paint • Glue sticks • Origami paper • Embroidery thread (assorted colors) • Stickers & sticker books • Fleece & silk material (1+ yd. pieces) • Ziplock sealable bags – all sizes

Camp Activities & Programs / Decorations

DVD movies & Wii games (ages 8+; rated G and PG) • iTunes gift cards • Gift cards to REI, Target, Michael's, Best Buy, Wal-Mart, Costco, Staples • Costumes for dress-up (for ages 10+) • Mascot costumes (adult size) • New cosmetics/moisturizer for teen workshop (sample size or larger.) • Disposable cameras • Blank journal books (for males & females) • Aluminum target-point arrows (archery) • Horseback riding helmets (adult size – Lg.) • Air hockey discs • Balloons – all sizes, assorted colors (latex free) • Curling ribbons – silver, black, white • New, plain white cotton T-shirts (child-adult sizes) & pillowcases for tie dyeing • Small carnival prizes (for ages 6-17) • Velcro catch ball sets • Golf balls (assorted colors) • Trekking poles • Pool toys (balls/inflatable toys) • Swim goggles & flippers • White tea-light candles • New one-piece swimsuits (child & adult sizes) • New board games • Face paint (water-based) • Duct tape and clear packing tape (2.95 mil or higher) • Temporary tattoos (for children) • New beach towels

Medical Supplies

New boxes of Band-Aids • New bottles of sunscreen • New cans of insect repellent • New lip balm • Latex-free gloves – all sizes • Dixie cups • Facial tissues

Office Supplies & Equipment

New digital camera (5+ MB) • iPad (2nd generation or newer), preferably 32MB, cellular connectivity • White copy paper (8.5"x11") • Photo paper – inkjet & laser compatible • Large easel paper tablets • White boards, markers & erasers • Nametags (clear plastic hanging, pin-on & sticker styles) • Recordable blank CDs & DVDs • Mailing labels (Avery #5160, 30/page) • Catalog-size mailing envelopes (6"x9", 9"x12" and 10"x13") • Stacking storage containers with lids (large sizes) • Unopened first aid kits • Small alarm clocks • Motion-activated nightlights with bulbs • USB thumb drives (2GB or larger capacity) • ScanDisk camera memory cards (1GB or larger capacity) • Batteries (AA & D sizes)

Kitchen Items

Pastry bags and tips • Rectangular full-size chafer with lid • Soup chafer with lid • Aluminum sheet pans, full size • Roasting pan 24"x 18" • 10" chef knives • Half-sheet pan baking extender 12x18 • Full-sheet pan baking extender 9x26 • Commercial muffin tins

Maintenance Equipment

Refrigerator: 16.5 cu.ft. (new or gently used). • Rototiller. • Scaffolding set. • Oxygen & acetylene tanks (large, for cutting torch)

IT'S ALL ABOUT YOU!

This new section is to help past campers, volunteers and core staff members keep in touch. Drop us an email at: info@campdream.org with a note about where you're living, your career, recent family news or a favorite camp memory. We'd love pictures too!

Meredith Daviess, volunteer and core staff member since 2009: graduating from The University of Montana, spring 2013; currently an EMT with the Frenchtown Rural Fire Department.



Children's Oncology Camp Foundation

P.O. Box 1450
Missoula, MT 59806-1450
www.campdream.org

NON-PROFIT ORG
U.S. Postage-
PAID
Permit #569
Missoula, MT



**CAMP
MAK-A-
DREAM**

Mail to:

Camp Mak-A-Dream
P.O. Box 1450
Missoula, MT 59806

Children's Oncology
Camp Foundation
is a 501(c)(3)
nonprofit corporation.
Contributions are
tax deductible.

Tax ID # 81-0472959
Spring 2013 / Issue 25

Make a Donation / Join Our Mailing List

Help make a dream come true for a child or young adult with cancer.

Your Name: _____

Address: _____ Email address: _____

City/State/Zip: _____ Phone #: _____

Camperships: I would like to donate ____ Campership(s) at \$500 each (sponsors one camper for one week).

Please include ____ engraved brick(s) at \$25 each. (One brick per campership donation, please.)

Name(s) to appear on brick(s): (Maximum of 30 characters) _____

General Donations: I would like to make a donation in the amount of \$ _____

Memorials / Honorariums: This gift is made in ____ honor ____ memory of _____

Given by _____

Send keepsake card to:

Name(s): _____

Address: _____ Phone #: _____

City/State/ZIP: _____

TOTAL AMOUNT ENCLOSED \$ _____

Paid by: Cash ____ Check ____ MasterCard ____ Visa ____ American Express ____ Discover ____

Account #: _____ Expires: _____

Signature: _____

**To donate online,
please visit our
website at
www.campdream.org.**