

The Dreamcatcher

GOLD CREEK, MONTANA

• A Publication of the Children's Oncology Camp Foundation •

WINTER 1996 - ISSUE # 5

★ OUR MISSION ★

The mission of the Children's Oncology Camp Foundation is to provide an appropriately supervised, cost-free camp program (Camp Mak-A-Dream) for children and young adults with cancer, in order that they may have the opportunity to participate in a variety of fun-filled camp activities, learn new skills, form positive peer relationships and develop greater independence and self-esteem.

The camp will be available on a priority basis to:

1. Children with cancer.
2. Adults with cancer.
3. Other individuals and groups with special needs and interests who wish to participate in a camp experience.

CAMP MAK-A-DREAM 1997 SCHEDULE

YOUNG ADULTS CONFERENCE
January 4-11

YOUNG ADULTS CONFERENCE
July 2-9

SIBLINGS CAMP
July 12-19

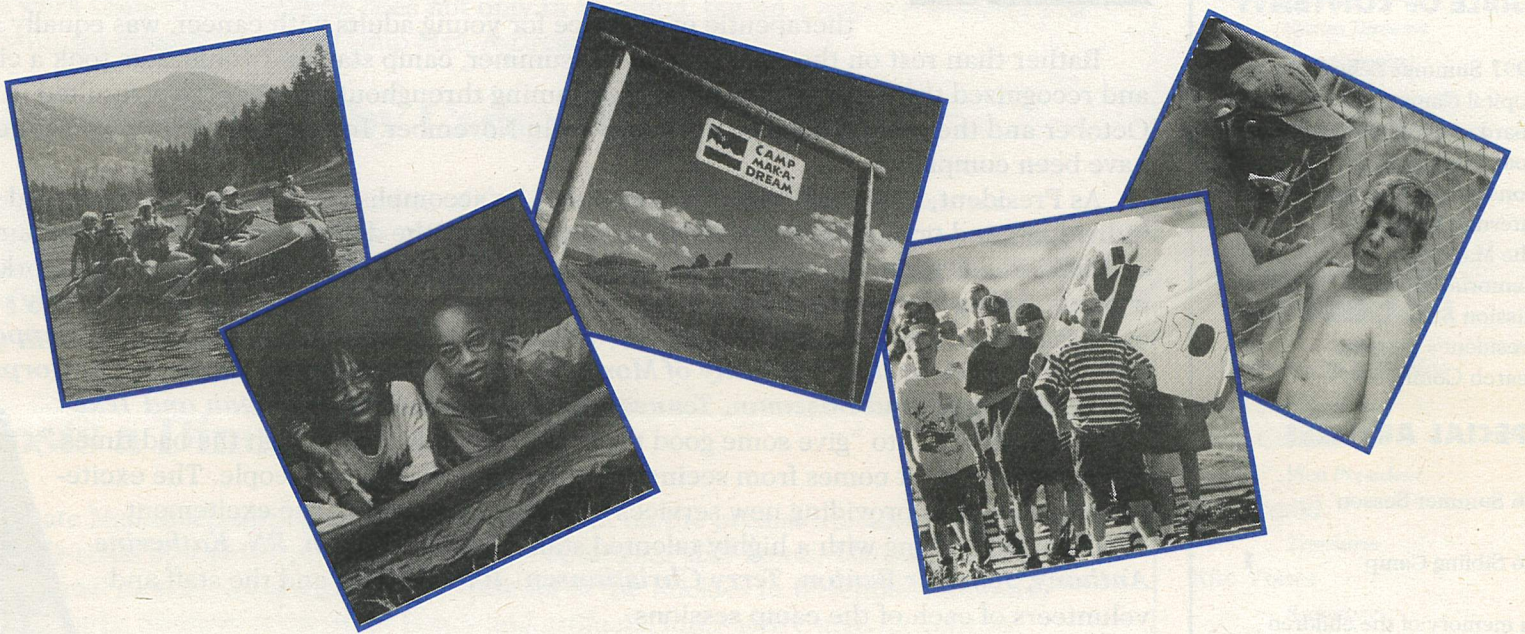
KIDS (AGES 6-16)
July 22-28

KIDS (AGES 6-16)
July 31-August 7

YOUNG ADULTS CONFERENCE
August 10-17



HELP MAKE DREAMS COME TRUE.
CALL (406) 549-5987
(800) 484-5890
EXT. CAMP (2267)



The 1996 summer season welcomed more than 120 campers during four sessions

This was an exciting year at Camp Mak-A-Dream! We welcomed more than 120 campers this year with four summer sessions, including a population of young adults ages 17-23 years at the first annual Young Adults Conference (Y.A.C.). Campers came from across the United States including Montana, Idaho, Washington, Minnesota, Wisconsin, Michigan, Massachusetts, Pennsylvania and Texas.

Campers were involved in many activities such as swimming, boating, fishing, horseback riding, arts & crafts, barn dances, hikes, rafting, archery, talent shows and cabin chats with peers. And for the first time, our new ropes course was opened and utilized.

More than 100 volunteers and 15 summer core staff

members helped make it a successful season. Dr. Stu Kaplan from Memphis, Tennessee joined our volunteer staff for one session and found he couldn't leave! He ended up as part of the CMD family for three out of four sessions. Who says camp is only for kids? Several registered nurses also volunteered their time and medical expertise to assure all campers were well cared for.

Our goal for '96 was to extend our invitation to many more campers through the expansion to a full camping season; to share our dream with children who have cancer and their families; and to share our vision with volunteers, donors, and friends. We feel that we have succeeded in our goal, made memories for all who came to Gold Creek, and began lasting friendships.

"Come one, come all" to Siblings' Camp

October marked Camp Mak-A-Dream's first camp for the brothers, sisters, sons and daughters of cancer patients. This particular camp was a pilot program to examine and help define the needs of this often overlooked population. Staff and volunteers welcomed 18 campers, ages six to sixteen, from across Montana and Idaho. They came to experience the same kinds of activities their siblings with cancer have experienced in the land of dreams in Gold Creek, Montana. Everything from archery to arts & crafts, talents shows, dances,

campfires and cabin chats kept these kids busy during the four day session.

Siblings and children of cancer patients have their own issues to deal with growing up in a family afflicted by cancer. They often have feelings of being "invisible" while their next of kin are attended to often around the clock. This camp allowed them to express themselves and share common feelings with other kids in similar situations.

A second camp for these special kids is scheduled for July 12-18 of the coming summer. If you know of someone who might benefit from our sibling and children's camp, have them give us a call at (406) 549-5987 and we'll be happy to send them more information and an application.

**A FEW WAYS
YOU CAN HELP
KIDS WITH CANCER.**

Camperships	6
Facility Rental	6
Honorariums	8
Volunteers Needed	6
Memorials	8

TABLE OF CONTENTS

1997 Summer Schedule	1
Capital Campaign	6
Board of Directors	7
Board Changes	6
Honorarium Listing	8
Internet Address	6
The Mailbox	4
Memorial Listing	8
Mission Statement	1
President's Message	2
Search Committee	6

SPECIAL ARTICLES

'96 Summer Season	1
'96 Sibling Camp	1
In memory of the children who enriched our lives	2
The Dream Makers	2
Adult Women's Cancer Conference	3
Annual meeting report and 1997 Plan	3
The many ways individuals and organizations help children with cancer	4
Congratulations Connie Hanson, RN	6
Louisiana Pacific kicks off Phase II of Capital Campaign	7
Rosemont Purchasing Honored by CMD	7
Montana Woodcarvers to make carved wall quilt.	7
Southgate Mall and Dinamation	7

Camp Mak-A-Dream is a non-profit 501 (c) (3) organization and follows all federal guidelines to maintain this status. Please feel free to contact the camp office if you desire more financial information.

*Public Relations Chairs:
Kelly Dodson
Susan Ash*

*Newsletter Coordinator:
Jennifer Benton*

*Design & Layout:
Susan Ash*

*Contributing Photographers:
Scott Hepler, Elke Goverson,
Jim Mudd and many
unknown volunteers.*

*Contributing Writers:
Katherine Anthony, Jennifer Benton,
Kelly Dodson, Connie Hanson,
Sally Francis Kehayes.*

Production & Printing:

*The Missoulian - Phred Jarvie,
Deb Larson, Jackie Maunder,*

2 © 1996 Children's Oncology Camp Foundation



President's message

How I wish I could make the excitement and urgency of Camp Mak-A-Dream and the Children's Oncology Camp Foundation jump off this page, into your life, knowledge and heart! Summer Camp 1996 was a definite leap for us; more campers, more staff, more food, more fun, more medicine, more of everything. With the leadership of *Connie Hanson, R.N., Health and Safety Director; Tim Carte, M.D., Medical Director; and Katherine Anthony, Camp Director*, this growth was successful! Our additional leap, to provide a therapeutic experience for young adults with cancer, was equally successful!

Rather than rest on the successes of the summer, camp staff and volunteers took a close look at our mission and recognized the need to continue programming throughout the year. This resulted in the Sibling Camp held in October and the Women with Cancer Retreat in November. In addition, plans for a winter Young Adult Conference have been completed.

As President, I know all this work could not be accomplished without the vision and work of many, many individuals and organizations. And in all the activities, the driving force is a focus on our mission, serving children and individuals with cancer. From the support of *Malstrom Air Force Base* to the work of our Board members; from the *Missoula Rotary Club's* completion of the Ropes Course to the *Beck Family's* use of their pond; from gifts of origami from *students at Hellgate Elementary* in Missoula to money raised by *Kappa Kappa Gamma Sorority* and *fraternities at the University of Montana*; from the *Montana Conservation Corps* to *volunteers in Kalispell, Butte, and Bozeman, Tennessee, Alaska, Illinois, Michigan and Texas* - the driving force is to "give some good times to help children through the bad times."

The excitement comes from seeing the successes of so many people. The excitement comes from providing new services to fulfill our mission. The excitement comes from working with a highly talented staff—*Connie Hanson, RN, Katherine Anthony, Jennifer Benton, Terry Christiansen, John Vishio*, and the staff and volunteers of each of the camp sessions.

The urgency? I feel a sense of urgency when I see the kids at camp. I know that the quantity, the length of their lives, is unknown. I also know that Camp Mak-A-Dream adds to the quality of their lives. I want to be certain that we can continue, together, to provide this quality.

Thank you for continuing your support to the Children's Oncology Camp Foundation.

Sally Francis Kehayes, President
Board of Directors, Children's Oncology Camp Foundation



In memory of the children who enriched our lives

As Camp Mak-A-Dream ends its 1996 year, we ask you to join with us in honoring the lives of four of our campers. We extend to their families our deepest sympathy and also appreciation for their sharing of their child with us. While each child had a shortened life due to cancer, each child will continue to enrich our lives.

The following four campers died in 1996:

*Dusty Crawford - Choteau, Montana
Nicole Hellebuyck - Rosecommon, Michigan
Brittany Keller - Billings, Montana
Nolan Truzalino - Butte, Montana*

The courage with which they confronted their struggles is an inspiration for all of us. They will always be in our hearts and minds, and always with us at Camp Mak-A-Dream.

Introducing the Dream Makers

November 20, 1996 was the introduction of The Dream Makers Advisory Board to the Children's Oncology Camp Foundation. The Caras Nursery "Christmas Store," through the generosity of Bill Caras, was an appropriate site for this celebration as the holiday season is a reminder of new beginnings, wishes and good cheer. The first Dream Makers are individuals who turned the wish for, and dream of, a camp for children with cancer into a reality.

Melanie Nedrud, Past President of COCF, presented each Dream Maker with a star to commemorate contributions to Camp Mak-A-Dream. The Dream Makers will meet once each year to review the Foundation and camp progress and will offer guidance as our mission continues. Recognition of, and appreciation for, these original Dream Makers for their vision and dedication was expressed by Melanie Nedrud and Dennis Lind, Executive Board Committee members, and Sally Francis Kehayes, current President of the Board of Directors.

Adult cancer conference hosted by Camp Mak-A-Dream

November marked a first for Camp Mak-A-Dream in hosting its first adult event, the 1996 Women with Cancer Retreat. For three days, twenty women came together with each other to relax, enjoy and share their stories of their lives with cancer. In addition to the twenty participants, there were fourteen program leaders who provided experiences from harp music, basket weaving and massage to informational talks about cancer and physical activities. The main lodge was transformed into an elegant atmosphere with candles, flowers and fine foods and intimate talks lasted into the wee hours of the night.

We would like to thank everyone who came to the Women's Cancer Retreat, as you were our pilot group. It turned out to be a wonderful event due to the efforts of many special people. First, our participants and program leaders and all of the volunteers..it couldn't have happened without you. And to all the fine merchants who donated so many lovely things, our special thanks for supplying and supporting this program. Thank you for all of the donations of food, wine, flowers, gifts, books and decorations donated by the following businesses: *Great Harvest Bakery, Mammyth Bakery, Bernice's, Headquarters, Montana Coffee Traders, Earl's Distributing, Bitterroot Floral, Heinrich's Flower Shop, Mentzer's Greenhouse, Mountain View Floral, Walden Books, Freddy's Feed 'n Read, The Book Rack, Hennesseys, JCPenney, The Bon, Body Basics, Party, Pine Mountain Crafts, Higgins Hallmark, Party Time and Missoula Textiles.*

Annual meeting report

Camp Mak-A-Dream was the site of the 1996 Annual Meeting of the Board of Directors, Children's Oncology Camp Foundation. Held in September, the annual meeting was attended by Missoula Board Members, Foundation staff, Regional members and representatives from the Michigan "Friends of Camp Mak-A-Dream" organization. Activities of 1996 were reviewed and the annual plan for 1997 was adopted. The annual plan contains the objectives to be accomplished in 1997 and is the basis for the development of the operating budget for 1997. Following the Annual Meeting, Camp Mak-A-Dream volunteers with and the Foundation joined the Board members and guests for a celebration luncheon. Volunteers and Board Members were recognized for their many contributions of time, talent, and commitment to the children and mission served by Camp Mak-A-Dream.



1997 Annual Plan

Communications

1. Develop policies of standardization for communications material.
2. Create Foundation material.
3. Act as liaison with Michigan organization.
4. Produce 3 newsletters.
5. Research a plan for corporate sponsors.
6. Develop a standard public relations plan.
7. Develop recommendations for camper memorial recognition and procedures for memorial recognition related to a camper's death.

Board Operations

1. Fill open Board Positions.
2. Recommend By-Law changes.
3. Plan Annual Meeting.

Dream Makers Advisory Board

1. Hold a yearly event for Dream Makers to continue their knowledge of, and support for, Children's Oncology Camp Foundation.

Finance Committee

1. Develop realistic budget.
2. Develop/carry out systems to adhere to budgeted income.
3. Develop and adhere to expenditure approval process.
4. Provide information on a timely basis to insure compliance to budget.
5. Review insurance policies.

Facilities and Grounds

1. Provide a safe, secure, attractive environment and facilities at camp.
2. Develop and build a camp amphitheater and cabanas (covered shade areas; and water stations).
3. Complete outdoor lighting.
4. Complete landscaping plan, including grove of trees as donated.
5. Complete Maintenance Director's apartment.
6. Develop a plan for entrance gate, and implement, as donated.
7. Develop facility inventory.
8. Develop annual maintenance plan.

9. Begin the development of a 5-10 year maintenance schedule.
10. Develop, with volunteers, a volleyball site.
11. Explore parking areas/plan for RVs.
12. Establish volunteer projects (Eagle Scouts, Air Force)
13. Complete tennis-basketball area.

Capital Campaign

1. Develop and carry out 3 year capital campaign.
2. Coordinate development and implementation of Western Heritage overnight camp out area with Camp Director and Facility Director.
3. Regional Board member development.

Grants

1. Complete outstanding grants.
2. Submit new grants.
3. Identify and apply to new sources.

Medical

1. Continue planning and development of new health building.
2. Research and complete OSHA and state requirements for the administration of blood products to campers who require this procedure while at camp.
3. Continue discussions with pediatric Gastric Motility Society and determine appropriate relationship with COCF.
4. Continue development of medical and safety support to campers and camp program and facility.
5. Recruit campers and medical staff for five summer sessions and six additional sessions through out the year.
6. Continue development of policies and procedures and standards for health and safety of all aspects of camp programs.
7. Represent COCF and health and safety program through local, regional and national forums.
8. With camp program committee, research and solicit rentals by other pediatric diagnostic groups.

Camp Program

1. Develop necessary documentation to begin American Camping Association accreditation process.
2. Continue development of Young Adults with Cancer program through 1 winter session, 2 summer sessions, and establishment of an internet home page.

3. Offer two summer sessions for 6-16 year olds at 50-56 campers per session.
4. Offer one summer session for siblings and children, ages 6-16 years, of a family member who has cancer.
5. Offer 2 Fall, Winter, and Spring sessions for : young adults with cancer; families of children with cancer; parents of children with cancer; or adults with cancer for a total of 6 sessions beyond summer.
6. Solicit, manage and generate revenue through camp facility rentals.
7. Expand camp committee membership.
8. Begin process of application for accreditation by American Camping Association.
9. Represent COCF in local, regional and national forums.

Annual Fund-Special Events

1. With Earl's Distributing, participate in annual Wine Festival.
2. Plan and carry out the Women's Health Retreat, May 4-6th.
3. Assist, as needed, with fundraiser in Arizona to be held in the spring.
4. Be available if, and when, other opportunities arise.

Annual Fund-Camperships

1. Assist with Blockbuster campaign.
2. Plan and carry out Men's Retreat to be held at camp in the Spring.

Volunteer

1. Recruit and place volunteers to meet needs of foundation.

Board Members

1. Attend monthly meetings, third Wednesday of each month.
2. Participate in Capital Campaign.
3. Participate in, or chair, a Board committee.
4. Attend at least one dinner at camp during a camp session.
5. Be an avid advocate for the Children's Oncology Camp Foundation.

A "basic" appeal

Camp Mak-A-Dream is a warm and fuzzy place where children and young adults with cancer can be themselves. They can enjoy an outdoor experience that otherwise might be denied them.

Camp Mak-A-Dream is their place of hopes and dreams. There is, however, another side to camp...one not of outdoor activities. It is the part that's not warm and fuzzy, but a brutally honest and necessary side.

It is the part of the experience that's often unnoticed by the public at large and our campers, but one that needs to be addressed 365 days a year. It is the basic cost of keeping Camp Mak-A-Dream's doors open.

We are talking about operational basics— heat, lights, power, insurance and maintenance-issues that are rarely addressed by publicity but need to be. How much do these things cost at Camp Mak-A-Dream? About \$100 a day, 365 days a year.

Can you sponsor a day of "basics" for Camp Mak-A-Dream?

Cost breakdown:	(approximate annual costs)
Insurance	\$12,850
Utilities	\$ 4,050
Phone	\$ 5,850
Maintenance	\$ 750
Rent	\$12,900 (foundation office in Missoula)
TOTAL	\$36,400 (a year)

Please keep in mind that these costs are for basic operation only and do not include any program costs, food, salaries or supplies. These costs simply keep the lights on, heat the cabins, allow the phone to ring, cover us from catastrophic loss (insurance) and allow for minor repairs and maintenance. We are very fortunate to have a new camp and most repairs items still have guarantees and warranties in place. Won't you help us by sponsoring a day at camp?

Give the sponsorship of a day at camp as a gift to someone you know and love.

The many ways others have helped

Bake a Dream

The health care providers from the Western Montana Clinic-Polson gathered together some of their favorite recipes and compiled them into a wonderful cookbook with proceeds of its sales going to Camp Mak-A-Dream. Dr. Carte, pediatrician at the clinic, is also Camp Mak-A-Dream's Medical Director. These cookbooks make great gifts and are available for just \$5.50 at either the WMC-Polson, or through the Camp Mak-A-Dream office in Missoula. Call for details or to order at (406)549-5987.

Philipsburg proclamation

The town of Philipsburg, Montana has officially adopted Camp Mak-A-Dream for 1997. Shirley Beck, co-owner of the Sapphire Gallery, asked for a proclamation declaring Philipsburg Camp Mak-A-Dream's adopted sponsor. The motion passed and the proclamation was recently issued by the town's mayor, Marshall D. Muchmore. Philipsburg will host campers this summer for a day of sapphire mining and more!

Kids help kids at Hellgate Elementary School

Fourth grade students at Hellgate Elementary School in Missoula, along with teacher Joe Power, Principal Bruce Whitehead, and parents like Karen Olsen, dedicated their efforts in making 1000 origami cranes this past spring. The students toured the camp, learned about the campers and the mission, and presented their Crane Mobile and individual Haiku poetry for the 1996 campers. At the end of the summer, these students joined with Japanese students and our campers for an international exchange camp day.

Piper Jaffray pitches in

On October 4th, Piper Jaffray, Inc. in Billings hosted a charity golf tournament benefitting Camp Mak-A-Dream. The event was organized and hosted by Piper Jaffray employees who raised over \$1,100 for camp.



WA
225 Campe

Camp Mak-A-Dream is committed to the mission of providing a safe and fun environment for children and young adults with cancer. The... You can sponsor a child you know, or sp...

RE

Knowing you have a child who is coping

Camp Mak-A-Dream exists to provide those with cancer during hard times. Often the treatment for cancer is long and difficult, but with peers who are at the same stage in treatment, it is a part of increasing one's resolve to cope.



"I want to tell you how much fun I had at camp. I have never felt so much love & support before. I learned so much about myself and others with cancer. Thank you so much!"

**Erin - Minnesota
Child Camper**

"...I was a camper at the YAC session in August. I want to extend to you my deepest thanks for creating a "magical" place...I had such a wonderful experience. I made great friends and memories. I think of camp often, and about the special people it takes to create such a happy place."

**Aimee - Michigan
Young Adult Conference**

"I would like to thank you for an incredible summer at Camp Mak-A-Dream. What a magical place you have created. I have never before met so many unforgettable and talented people and have so many precious memories of my time with the kids."

**Elizabeth - Illinois
Staff Member**



WE WOULD LOVE TO
PLEASE W

TED ships for 1997



Providing a cost-free camping experience for children
sending one camper is \$500.00 per session.
child who is unable to afford to go to camp.

ARD significantly helped with difficult treatment

For some good times to help them through some very
side effects can be life threatening. Building relationships
with those who have survived cancer, can be an incredible
with, and tolerate, this difficult treatment.



*"The camp was so much fun. All three of us from Texas
were ready to go. We had so much fun and are ready to go
back again!"*

**Victoria - Texas
Child Camper**

*"...it makes me feel extra special knowing that people
like you care about people like us."*

**Beth - Michigan
Child Camper**

*"As parents of a child with a serious medical
condition, life has been challenging. We have always strived
to make Ryan's life as normal as possible, however, Ryan
being away from home without mom or dad was never a
consideration. Camp Mak-A-Dream changed that for Ryan.
His week in Montana was an experience he has only
dreamed of having. Thank you for affording our son this
most fabulous opportunity. A dream really did come true for
our son, Ryan."*

**Paul & Donna - Wisconsin
Parents**

**AR FROM YOU, TOO.
E SOON!**



MFCU helps make dreams come true

During the month of December, all four branches of the Missoula Federal Credit Union are asking for "A Dollar A Dream" to benefit Camp Mak-A-Dream. The event will take place at each of the four branches with donors receiving their names on stars which will decorate a model log cabin at the Brooks St. main location. Stuffed bears will also be available for donations of \$25.00 or more. The bears will wear gift tags including the donor's names and will be donated to Camp Mak-A-Dream campers after the event ends.

Camperships for kids

Show your parents, children, friends or relatives how much you care for them by sponsoring a campership in their name. Camperships enable children and young adults with cancer from all across the country to visit Camp Mak-A-Dream at no charge. Donations of \$100, \$200, \$300, \$400, \$500 or more assist greatly in this program. We will even send a card to the honorary notifying them of the gift you've given in their name.

Muscle builds ropes course and archery range

Members of the Missoula A.M. Rotary Club, along with the men and women of Malstrom Air Force Base, gave their time and energy in the construction of the new high ropes course at camp, which has already been enjoyed by many. Tom Wandrych and the Montana Bow Hunters began constructing a wonderful new archery range. *A donation of your time or physical labor is valuable to Camp Mak-A-Dream!*

How you can help

- Give a campership this Christmas in honor of your loved ones.
- Gather friends together over a holiday dinner and collect funds to support a campership in 1997.
- Belong to an organization? Encourage your group to adopt Camp Mak-A-Dream. The Montana Order of the Eagles has designated camp as their charity for 1996.
- Are you on a college campus? Suggest that campus organizations support Camp Mak-A-Dream. Kappa Kappa Gamma Sorority at the University of Montana made hats for campers and raised funds through a raffle and fraternity games.
- Have time to spare? Volunteer this spring to work on our landscaping projects.

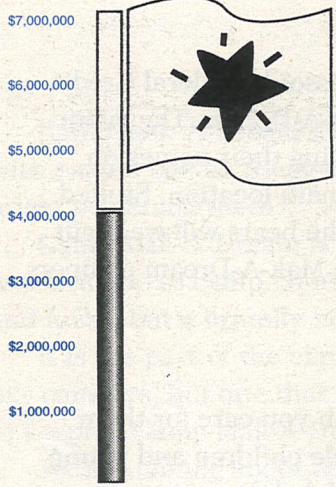
The "amaizing" maze

Remember the movie "Field of Dreams"? Remember the big Iowa corn field and Kevin Costner searching to find his way out? Well, there is another corn field in Detroit, Michigan, where thousands of people walked hundreds of miles to find their way out of "The Maize Maze." Ford Motor Company, in cooperation with local Detroit organizations, created a maze from a five acre corn field and charged an entrance fee to raise money for three charities...one of which was Camp Mak-A-Dream.

"We anticipate a total of about \$300,000 to be raised, then split between the three organizations who provided volunteers to work at the maze," states Capital Development Director for Camp Mak-A-Dream, John Vishio. "Our portion of that money could work out to be between \$70,000 and \$100,000," he continued.

It averages about \$500 per camper to cover the costs of food and lodging for each child or young adult who attends one, seven-day session at camp. And with an anticipated expanded camp schedule for 1997, this fund raising event will make it possible for Camp Mak-A-Dream to welcome even more campers...at no cost to them.

We would like to thank all of the wonderful volunteers and previous campers for their hard work at the maze. Detroit can be hot and sticky, especially in a corn field in August. So, hats off to all of you- you've truly helped many dreams come true!



CAPITAL REPORT

Watch for a detailed report in the February 1997 newsletter!



DREAMS ON THE NET

Camp Mak-A-Dream is now on the Internet. Look for <http://www.campdream.org/>



VOLUNTEERS NEEDED

Bulk mailings, office support, computer work, cleaning, yard work and special events are just a few of the positions needing volunteers. If you are interested in being a part of Camp Mak-A-Dream, call Dianna Riley at (406) 543-4855, or call the camp office at (406) 549-5987. We'd be more than happy to hear from you!

Volunteers help make it possible for children and young adults with cancer or other life-threatening illnesses to attend Camp Mak-A-Dream. Please, help us make dreams come true... volunteer today!

Board member changes

With great thanks and appreciation, we say goodbye to Board members whose terms ended this year: Deb Greer, Annie Pontrelli, Guy Bingham, Will Stratford, M.D., and Dusty Deschamps. Joining the Missoula Board are: Sharon Snavely, Cathy Capps, M.D., Tom Copley, C.P.A.

Three of the retiring members served as committee chairpeople. Deb Greer chaired the Program Committee and, with her husband Jeff, set the stage for the very first camping program at Camp Mak-A-Dream. In addition, Deb and Jeff served as the very best educators for us about our mission. We learned from them how families cope with the diagnosis of cancer, what supports are necessary and how our camp program can best meet the needs of children. We also benefitted from the grace, courage, and caring of the Greer family. Annie Pontrelli co-chaired the Special Events and Fundraising Committee, organized and/or worked with numerous fundraisers, and kept us energized with her warmth and compassion. Guy Bingham chaired the Facilities Committee, worked to have our kitchen donated and, with Dave Fisher, secured the commitment of the Montana Contractors' Association to pave our roads.

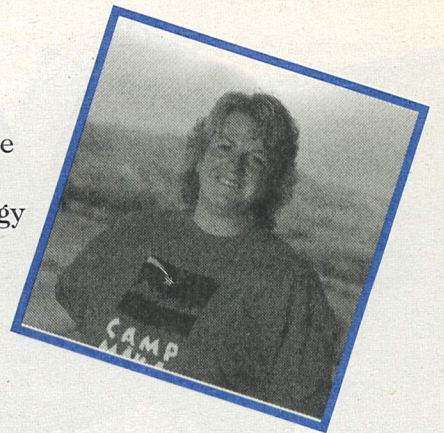
Deb, Annie and Guy: you leave your imprint on Camp Mak-A-Dream...THANKS For All Your Successes and Efforts!!

Search Committee

Missoula Board members Scott Wilson, Susan Klein, Paulette Fisher, and Sally Francis Kehayes comprise the Search Committee for the Executive Director. Beginning in September, the committee conducted an assessment and review which formed the basis for the search. Ongoing professional recruitment expertise has been donated to the Foundation by Jay Olson of Robert William James & Associates. A new Executive Director will be announced and will join the Foundation staff in January, 1997.

Congratulations Connie Hanson, RN

Children's Oncology Camp Foundation and Camp Mak-A-Dream congratulate Connie Hanson, RN, Director of Health and Safety for Camp Mak-A-Dream. Connie recently attended the 1997 COCA conference in Charlotte, North Carolina where she was nominated and elected to the Board of Directors of the Children's Oncology Camping Association, Int'l (COCA), which has a membership of 62 camps from across the USA, Canada and Ireland. As a board member, Connie will attend annual conferences and be a voting member of the organization. Her election brings national recognition to both Connie and Camp Mak-A-Dream.



Camp Mak-A-Dream facility available for rent

Our facility at Gold Creek is beautiful all four seasons during the year. Since we are open all year long, we are able to extend an invitation to groups to rent the facility. Our handicap accessible facility includes 4 cabins, each housing 26 people with individual kitchens, fireplaces, and living areas, a mountain lodge with recreation, meeting, and dining areas, and additional buildings for arts and medical needs. Food service is available with a variety of menu selections for home-style serving.

Amenities include: high-ropes course, horseback riding, archery range, art building, billiards, ping-pong, swimming pool and hot tub, basketball, sports field and equipment, big screen TV and video equipment. The facility is also close to Discovery Ski Resort and Sapphire/Garnet Mining.

For more information, call Katherine Anthony at (406) 549-5987



HELP SEND A KID TO CAMP-BUY A CAMBERSHIP

Camp Mak-A-Dream is committed to the mission of providing a cost-free camping experience for children with cancer. Help us meet this mission. The cost for sending one camper is \$500.00 per session. You can sponsor a child you know, or sponsor a child who is unable to afford to go to camp. Fill out the form below and send to the Camp Mak-A-Dream office at P.O. Box 1450, Missoula, MT 59806.

Name _____ Phone _____
 Address _____
 City/State/Zip _____
 Amount Enclosed \$ _____
 In addition I would like to pledge \$ _____ for _____ Years

Louisiana Pacific kicks off Phase II of the Capital Campaign

During the course of the Dream Makers annual gathering, Children's Oncology Camp Foundation President Sally Francis Kehayes announced the kick off of Phase II of the \$7,000,000 Capital Campaign. "We reached the half way point in Phase I," said Sally Francis, "now we need to go the extra mile in Phase II which has an equal goal of \$3,500,000. Mr John Mikkelson and Ms. Arlene Nicolet of Louisiana Pacific said that "Louisiana Pacific wanted to be the first gift in for Phase II." They presented a company check for \$30,000 to President Kehayes and Paulette Fisher. Mr. Mikkelson said "Louisiana Pacific is proud to be associated with Camp Mak-A-Dream and wanted to lead the way in Phase II in recognition of the work Camp Mak-A-Dream does not only in Montana, but on a national scale as well. We thank Louisiana Pacific for your generous support of Camp Mak-A-Dream.

Rosemont Purchasing honored by Camp Mak-A-Dream

On November 13, 1996, Harry and Sylvia Granader, founders of Camp Mak-A-Dream, along with their son Danny Granader and wife Sherry of Texas, attended a special meeting in Chicago, Illinois of Rosemont Purchasing management and staff. Rosemont was presented with a framed commemoration for their generous donations of food and kitchen equipment for the 1996 Camp Mak-A-Dream season. Rosemont will continue its support of Camp Mak-A-Dream through a charity dinner auction to be held in the spring of 1997.

Southgate Mall hosts a Dino-Mite exhibit

If you didn't make it to Southgate Mall this past September, you missed out on the prehistoric adventure of a lifetime. For six weeks, several life-sized dinosaurs called the jungles of Southgate Mall home. The exhibit was sponsored by several local and national merchants along with the Museum of the Rockies in Bozeman, Montana. Visitors were treated to self-guided tours, displays of dinosaur bones and artifacts, inter-active activity centers and more! Some young visitors even got to "camp out" with the larger-than-life creatures.

Camp Mak-A-Dream had a booth set up in the mall's center court area selling dinosaur T-shirts designed by two Camp Mak-A-Dream campers to help raise funds for future camps. We would like to thank Southgate Mall and all of its employees for including Camp Mak-A-Dream in this event. For six Saturday nights during the Dino's habitation of Southgate Mall, kids could camp out under a canopy of dinosaurs, with the proceeds going to Camp Mak-A-Dream. The event helped raise almost \$3000. It's efforts such as this that make the dream of coming to camp a reality for children and young adults with cancer. Bravo!



The Woodcarvers of Montana carve their mark at CMD

Barb Alonzo, President of the Woodcarvers Association, attended the October Foundation meeting and announced that members have been working on a "quilted wall carving" to be displayed at Gold Creek. Carvers were given a 12 inch square block to carve Montana scenes for the quilt. One carver has created his square to duplicate the Camp Mak-A-Dream carousel pony currently under construction. Dr. Jim Dunlap, one of our '96 medical volunteers, began his carving by asking young adults from this summer's camp to initiate the first shavings. What a beautiful gift this wood carved quilt will be!



CHILDREN'S ONCOLOGY CAMP FOUNDATION

Dr. Tim Carte
Medical Director
Connie Hanson, RN
Health & Safety Director
Katherine Anthony
Camp Director
Terry Christiansen
Facilities Director
Jennifer Benton
Office Manager

COCF BOARD OF DIRECTORS

Sally Francis Kehayes,
President
Dave Calahan
Vice President
Jan Cogdill
Treasurer
Kim Visser
Secretary
Melanie Nedrud
Past President

Lowell Bartels-Helena
Dr. Cathy Capps-Missoula
Dr. Tim Carte-Missoula
Tom Copley-Missoula
John "Harp" Cote-Butte
Kelly Dodson-Missoula
Carole Erickson-Missoula
Max Ericson-Havre
Sharon Farrell-Boise, Idaho
Paulette Fisher-Missoula
Bob Gauthier-Polson
Rev. Ernest Green-Deer Lodge
Phil Grimm-Butte
Dick Hughes-Whitefish
Terry Judd-Kalispell
Susan Klein-Missoula
Kent Kleinkopf-Missoula
Dennis Lind-Missoula
Peter Linsey-Bigfork
Kitty Lusse-Missoula
Mark McDonald-Polson
Dale Moore-Missoula
Dan Morgan-Missoula
Ken Reesman-Missoula
Larry Riley-Missoula
Sharon Snavelly-Missoula
Mark Staples-Helena
Dr. Sheila Sterns-Dillon
Donna Ueland-Billings
Scott Wilson-Missoula
Twila Wolfe-Missoula

HONORARY BOARD

Sophie Craighead-Montana
Harry & Sylvia Granader-
Michigan
Danny Granader-Texas
Susan O'Connor-Montana
Phyllis Washington-Montana

GIFTS WERE MADE IN MEMORY OF...

Helen Ackerly
Joan Anderson
Charlie Anderson
Clarence Anthony
Scott Arnold
Fred Babbin
P.B. Banister
Jane Hartman Beyer
Elsie Beebe
Bill Blaz
Teddy Bourett
Richard C. Bowers
Kathy Fox Boyle
Elmer Brekke
Dorothy Bryan
Helen Bucher
Merle Busby
Joe Cada
Bob Cameron
Carl Carlson
Andrea Carlson
Chica
Jan Christensen
Charles Clouse
Don Connick
Charles Cowell
Joyce Cowling
Dylan Crawford
Edyth Dale
David Davies
Lorney Deist
Howard Delaney
Sharon Demarais
Charlotte Diettert
Vera Duran
Earl Eccleston
Vernon Findley

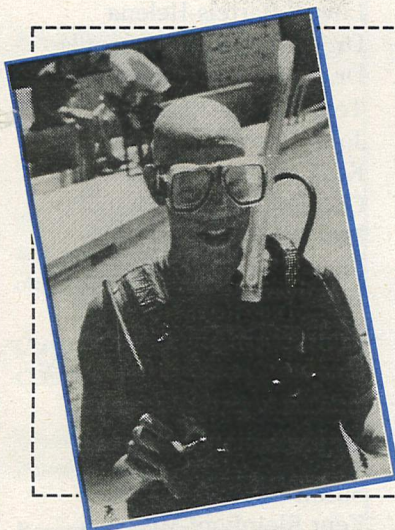
Craig Finnegan
James Finnegan
Peter Finnegan
Edward Fisher
Bill Fox
Mr. Franceschi
Maria Franceschi (Zardini)
Robert Frank
Sophie Friedrich
Angela Gallagher
Mary Francis Gary
Landon Gemar
Karl Gerdtz
Rob Goff
Mary Anne Goodman
Robert Goss
Beatrice Gray
Mary Jo Graybeal
Gerald Grewer
Jerry Gross
Shirley Gruebele
Gerald Gruver
Blanche Hablitt
Gary Hancock
Emma Hangan
Henry H. Harter
Marcie Hekkel
Elsie Hill
Mary Lou Hill
Gilbert Holliday
Willis J. Hossfeld, Sr.
Jacob Hoylo
Jacob Hoylo
Rita Huffsmith
Lanny Icenogge
Dr. Albert Jacobson, Jr.
Veronica Jemming

Elizabeth Jensen
Charles Johnson
Palmer Johnson
Elmer Jones
Frank Kelly
Daniel Kinney
Glenn Kline
John Krambeal
Helen Krause
Vern Krostad
Marvel Lacasse
Susan Lake
Matt Larson
Betty Jean Larson
Benton Leblanc
Matt Lecoure
Jim Lennox
Shawn Lewis
William Lien
Bill Little
Andree Mack
Kathryn Manthie
Vivian Marchie
Alice Furry Markus
Rick Marquardt
Eileen McCallum
Bob McCann
Bruce McCollum
Joseph McGinley
Marshall McKamey
George Melder
Russell "Bub" Mero
Ross Middlemist
Bernadette Miller
Maria Monaco
Michael Morris
Madeline Murrish

Dave Nathe
Sandra O'Neill Nelson
Joseph Willard Nienamaker
Fred Nopper
Daniel Nordeen
Richard Olesburg
Dave Oltrogge
Hilda O'Brien
Michael O'Keefe
Phyllis Page
B. G. Paige
Boynton Paige
Aaron Palmquist
Robert Parks
Hazel Parson
Bill Paull
Dick Paull
Dale Payne
Anna Perfetto
Edna Peterson
Hulda Peterson
Victor Peterson
Frenchy Pickering
Penny Pidcock
Janet Polich
Ken Powell
Mae Risch
Edward Rosenberg
Helen Rubens
Joe Russell
Dale Schaffer
Joan Scharf
Margaret Ann Schatz
Pat Scholl
Theresa A. Schueller
Carole Silverman
Jean Smith

Louise Smith
Georgia Spooner
Beverly Standley
Beach Staninger
Mary Jane Steese
Marlene Stellmon
Anna Mae Stenhjem
Everett Stephens
Amelia Stergar
Fanny Stover
Margaret Sullivan
Charles Tarr
Charlotte Tash
Maureen Thurston
H. A. Tilton
John "Bud" Tobin
Calvin Touchette
Tana Turner
Robert van Sickle
Irene Vielt
Ralph Villa
James Webb
Magdalen Wehner
Millie Wheeler
Thomas Whitcomb
Carmille White
Bob Williams
Stella Williams
Aaron Wilson
Ted Wilson
Darrel Woodbeck
Delores Wuerl
John Wynn
Gary Young
Bobbi Yuricic

(The contributions listed above were received from June-September, 1996)



A WONDERFUL WAY TO REMEMBER THOSE YOU LOVE.

Help make a dream come true for a child or adult with cancer. If you or someone you know would like to make a generous gift in a loved one's name, just fill this out and forward it along with your gift to the Camp Mak-A-Dream office at P.O. Box 1450, Missoula, MT 59806. All gifts will be acknowledged with a personalized keepsake card.

This gift is made in honor of _____

This gift is made in memory of _____

Given by _____

Send the card to _____

Winter 1996, Issue #5



Children's Oncology Camp Foundation

3700 Russell, Bldg. B
Suite 101, Lower Level
Missoula, MT 59801
P.O. Box 1450
Missoula, MT 59806-1450

NON-PROFIT
U.S. Postage
PAID
Permit #368
Missoula, MT

1997 SCHEDULE

After a successful 1996 season, we're gearing up for 1997! Here are the dates of upcoming camps. Additional dates may be added both before and after summer sessions.

YOUNG ADULTS CONFERENCE	January 4-11
YOUNG ADULTS CONFERENCE	July 2-9
SIBLINGS CAMP	July 12-19
KIDS (AGES 6-16)	July 22-28
KIDS (AGES 6-16)	July 31-August 7
YOUNG ADULTS CONFERENCE	August 10-17

If you would like to participate in any of these camps, either as a participant cancer patient or as a member of our staff, please contact our camp office for more info and an application. Our number is (406) 549-5987. Our office hours are Monday-Friday, 8-5 MT. We look forward to hearing from you!

