

THE DREAMCATCHER

CAMP MAK-A-DREAM ★ GOLD CREEK, MONTANA

OUR MISSION

Camp Mak-A-Dream provides a medically supervised, cost-free Montana experience, in an intimate community setting, for children, young adults and families affected by cancer.

2008 Schedule

January 3 – 10

Young Adult Conference
Young adults with cancer (ages 18 – 30)

May 14 – 19

Young Adult Survivors Conference
Young adult cancer survivors
(ages 20 – 39)

June 19 – 26

Young Adult Conference
Young adults with cancer (ages 18 – 30)

July 1 – 8

Teen Camp
Teens with cancer (ages 15 – 18)

July 12 – 19

Kids Camp
Kids with cancer (ages 6 – 14)

July 23 – 30

Siblings Camp
Kids who have a brother, sister or parent
with cancer (ages 6 – 17)

August 2 – 6

Heads Up Conference
Young adult brain tumor survivors
(ages 18 – 25)

September 4 – 8

12th Annual Ovarian Cancer
Survivors Retreat
Women diagnosed with ovarian cancer

October 9 – 12

13th Annual Women's Cancer Retreat
Women diagnosed with cancer

CAMP MAK-A-DREAM EMBARKS ON STRATEGIC PLAN

The Long Range Planning Committee of the board of directors at the Children's Oncology Camp Foundation has been working hard determining a vision for the future of Camp Mak-A-Dream. We reviewed the past thirteen seasons, looked at where we are, how we got here, and how we can best fulfill our mission.

Since we are fortunate enough to own a beautiful 87-acre facility, our focus moving forward will be to offer additional cancer-related programs throughout the year. Currently, the majority of our programs are for younger participants in the summer, however, we also offer young adult programs in January and May as well as women's cancer retreats in September and October. Our goal is to slowly add new programs, one or two per year, until we're offering mission based programs every month of the year.

Of course, additional programs cost additional money—money we'd like to raise from across the nation, since we serve a national population. So, in order to raise both funding for and awareness of our current and growing programs, we're planning to open satellite offices in a few strategic geographic areas of the country. The purpose of these new offices will be to spread the word about Camp Mak-A-Dream to potential participants, volunteers, medical facilities and donors. We hope to first get the ball rolling in the Twin Cities metro area of Minnesota, with other areas to follow.

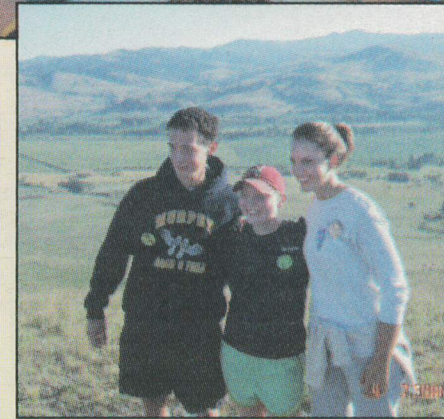
For more information, or to get involved, please contact our Missoula office at (406) 549-5987 or camp@montana.com.



THE HEADS UP CONFERENCE

Camp Mak-A-Dream is pleased to be hosting a new program in August called the Heads Up Conference, or HUC, which will address the special needs of young adult survivors of childhood brain tumors. Although these young people are currently free of their cancer, many of them face ongoing issues as a result of the radiation, chemotherapy or brain surgery used to cure their diseases. Typical challenges these young people face are with day-to-day relationships, problems obtaining and maintaining employment, constant battles with insurance companies, and the quest to obtain quality healthcare.

This conference has been created and planned jointly by Camp Mak-A-Dream and the Children's Brain Tumor Foundation in New York, which is underwriting it. The 2008 Heads Up Conference will be a pilot program with a select group of 30 brain tumor survivors from across the country. Following this program, we will evaluate its success and relevance, and hope to offer it again in the future as demand warrants.





Help Someone Get to Camp

by Donating
Extra Frequent
Flyer Miles

If you have 25,000 or more unused frequent flyer miles, we'd love to talk to you!

Camp Mak-A-Dream can utilize miles in blocks of 25,000+ banked on most any airline. The airlines that service Missoula, MT include Northwest/KLM, Delta/SkyWest, United and Horizon/Alaska Air. We are also happy to accept any transferable discount coupons, codes or other special offer vouchers.

Donated miles help us:

- ★ Get campers to Camp from all across the country
- ★ Allow staff to travel to promote Camp and raise funds
- ★ Bring in professional presenters & speakers for our programs

Your gift of 25,000 miles (or more) means a child or young adult who may not otherwise be able to attend Camp...can!

If you're interested in donating miles, please contact **Shirley Hummer** in the Camp Mak-A-Dream office at (406) 549-5987 or shirley@campdream.org.



Through the Eyes of FAMILY MEMBERS

Some of the greatest letters we receive are from family members of our participants. We thought we would share with you a few examples of how our camper families feel an experience at Camp Mak-A-Dream has impacted the life of their loved one with cancer.

To all who make Camp Mak-A-Dream possible,

Thank you, thank you, thank you for giving our son the opportunity to attend Camp Mak-A-Dream's Teen Camp last summer. You have truly made a dream come true! He had a wonderful time and can't seem to stop talking about Montana, the Camp activities, the big sky, the field trips, the counselors and most of all, the friends he made.

It means so much for him to be with kids that understand what he has been through. Camp helped build his self-esteem and made him realize that there are other kids just like him, from all over the world, who have endured what he has.

After I picked our son up from the airport he said, "you know, I have a lot to be thankful for." Before he attended Camp, I never thought I would

hear him say something like that. We feel that the experiences from Camp Mak-A-Dream will help him as he grows into adulthood, and that he will continue to help other cancer survivors by letting them know that there really is life after cancer.

- Parents of a teen camper

To Camp Mak-A-Dream,

Our son was a camper for two summers several years ago. He had Non-Hodgkins B cell Lymphoma, stage 3. He is doing well now, almost six years in remission. The weeks he spent at Camp Mak-A-Dream were the only times he felt truly happy during that chapter of his life.

- Parent of a teen camper

Dear Camp Mak-A-Dream,

Thank you for providing my mother with laughter, fun and fellowship at your annual Ovarian Cancer Survivors Retreat. She looked forward to this every year and treasured the friendships she made there. Thank you just doesn't seem adequate to convey my gratitude.

- *Daughter of Ovarian Cancer Retreat participant*

We also received a call recently from a mother whose daughter returned home from camp in January sounding happier than she had been in a very long time. She wanted to extend a heartfelt thanks to the Camp staff for helping her daughter connect with another girl who lives just about 20 minutes from them back East. The two young women have continued to connect upon returning home from Camp's Winter Young Adult Conference held each January.

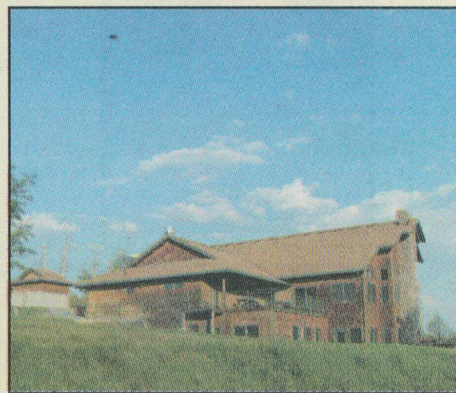
Hold Your Next Event at Camp Mak-A-Dream

Camp Mak-A-Dream may be the perfect place to hold your next group function. Our fully-accessible facility sits on 87 beautiful acres in Gold Creek, Montana, and is available to outside groups for rental in the off-season—late August through early June.

Our health center building is also available for either day or overnight use and is an ideal setting for small group retreats, company meetings, board functions and more. Perfect for groups of six to 10 people. Take advantage of private sleeping rooms, a conference room with high-speed Internet access, wide screen TV & A/V equipment and full food and beverage services.

Amenities include:

- ★ Beautiful setting
- ★ Four modern cabins with common-rooms and fireplaces
- ★ Outdoor patio area with picnic tables
- ★ Heated outdoor pool, hot tub, recreation room, large-screen TV, DVD and VCR players, mini-golf course
- ★ Lodging for up to 110 people
- ★ Full food and beverage service
- ★ Break-out meeting rooms
- ★ Specialty program areas: arts and crafts building, archery range, climbing wall
- ★ Great facilities for meetings, retreats, weddings and other large gatherings



For more information on renting Camp Mak-A-Dream's facility and available dates, please contact **Shirley Hummer**, rental coordinator, at (406) 549-5987 or shirley@campdream.org, or visit our Web site at www.campdream.org.

President's Message

Dear Friends and Supporters:

I am writing this letter as we're beginning to see the first signs of spring in western Montana. I like to think of Camp Mak-A-Dream in the same light as I do spring. Camp provides hope and new beginnings to so many children and adults every year. It is a place to put the effects of cancer out of your mind for a week and just live and enjoy the Montana camp experience we provide.

We would not be able to provide this without the support of all of you. Our board and staff send out many thanks for your kind and generous support, but the thank you that means the most to all of us is knowing that we are helping people cope with and take a temporary escape from the daily challenges of living with cancer.

This past year has been busy with new projects and camp maintenance, as well as planning several new additions to Camp. We have been working on a strategic plan to set our path for the future based on our success from the past. We have grown up over the past 10 years and we are now in a phase of continued growth and maturity.

Again, a big heartfelt thank you to all of you for the encouragement and support you have provided this past year with your generous gifts. With your continued support we, together, will continue to provide our services well into the future.

Bob Homer
President

Children's Oncology Camp Foundation

CAMP MAK-A-DREAM 2008 Board of Directors

** Executive Committee Members*

*** Dee Dee Blaney**

First American Title Co. of Montana

Mark Dvarishkis

Northwest Farm Credit Services

Wayne Hiett

Galusha, Higgins & Galusha

*** Bob Homer**

Bitterroot Motors

Pattie Ireland-Tornabene

Self-employed Investor

KK Jense

Jense, Inc.

*** Mike Juhola**

Essential Home Inspection

*** Cory Laird**

Reep and Bell PC

Jordan Lind

ALPS

*** Doug McAlear**

Indimac Bank

Nate McCarthy

Galusha, Higgins & Galusha

*** Will McCarthy**

Worden Thane, PC

*** Colleen Powers**

Terry Payne & Co.

Chuck Sulkala

National Auto Body Council

ACME Body & Paint Co.

Judy Wahlberg

ReMax Realty

Tom Walsh

Montana Rail Link

Anne Wright

St. Patrick Hospital & Health Sciences Center

Foundation Staff

Stu Kaplan, MD

Executive Director

Jennifer Benton

Director of Marketing & Special Events

Beth Martin

Camp Director

Shirley Hummer

Residential & Rental Coordinator

Julie Hiett

Bookkeeper

Erin Rome

Chef/Kitchen Manager

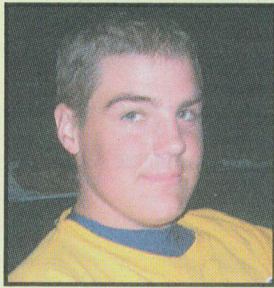
Jake Wood

Facility Manager

Denise Small

Administrative Assistant

Campers REMEMBERED



Matt Schoals

Dewitt, MI

18 years old

October 2007



Katelyn Jurek

Maplewood, MN

20 years old

April 2007



Jeremy Rowe

Twin Falls, ID

13 years old

September 2007



Mindy Guidry

Harvey, LA

23 years old

June 2007



Leah Stoffer

Grand Rapids, MI

13 years old

July 2007



Ronnell Ragbir

Memphis, TN

Trinidad-Tobago

21 years old

June 2007



Courtney Cook

Norcross, GA

25 years old

September 2007

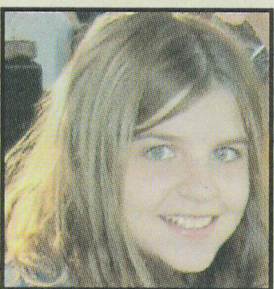


Holly Young

Dennis Port, MA

22 years old

January 2008



Katherine McVey

Stow, OH

12 years old

March 2007



Sandra Sharpe

Ottawa, Ontario

Canada

20 years old

December 2007

HOW YOU CAN HELP

Sponsor a Camper with a Campership

Sponsor a child or young adult for a cost-free week of camp with a \$500 Campership donation.

Please see form on the back cover of this newsletter for more information.

Make A Memorial or Honorarium Donation

Make a donation in memory of a friend or loved one, or in honor of a holiday or special occasion. Camp Mak-A-Dream will send a keepsake card to the family or honoree.

See donation form on back cover of this newsletter.

Make A Pledge or Planned Gift

Pledge an amount to be paid over a period of time (monthly, quarterly, annually). You can also leave Camp Mak-A-Dream as a beneficiary of your life insurance or in your will. Camp Mak-A-Dream is a proud participant in Legacy Montana: www.legacymontana.org.



Give an Item from our Wish List

There are many everyday items and goods we need each camp season. You can help by donating an item from our Wish List found on the back cover.

Display our Literature

You can help us get the word out to possible campers, volunteers and donors by displaying a Camp Mak-A-Dream poster or brochures at your place of business or professional office.

Have us Speak at Your Civic Organization or Business Meeting

We love to share what's happening at Camp Mak-A-Dream with members of different communities. If you're a member of a civic organization or would like to hear about Camp at your next business meeting, please contact Jennifer Benton at (406) 549-5987 to arrange a speaking engagement.

Volunteer

Spend the most incredible week imaginable by volunteering at Camp. You must be at least 18 years of age to apply and go through an extensive interview process. Applications are available by calling our office at (406) 549-5987 or visiting www.campdream.org. We'd also love to talk with you if you're interested in volunteering in our foundation office in Missoula or at a fundraising event.

Rent our Facility

You can rent the beautiful Camp Mak-A-Dream facility, late August through mid-June, for your next gathering or meeting. Please see page 3 for more information, or visit www.campdream.org.

Donate Frequent Flyer Miles

Help us fly a child or young adult with cancer to Camp, or bring in professional program speakers to conduct workshops, or allow our staff to travel and spread the word about Camp Mak-A-Dream by donating frequent flyer miles. Your gift can help make attending Camp possible for someone who might not otherwise be able to get here. More information is available on page 2.

Host a Dream Tour

Are you a proud supporter of Camp Mak-A-Dream? Would you like to have the opportunity to let others know about the great work going on in Gold Creek, Montana? Consider hosting a Dream Tour. A Dream Tour is a virtual tour of Camp Mak-A-Dream that can take place in someone's home, a community center, or anywhere with a DVD player. It can take place at an informal dinner party, a lunch, a cocktail hour, a dessert social, or other creative get-together. If you are willing to host such an event, please contact Stu Kaplan at (406) 549-5987. We are



traveling throughout the country in 2008, and would love the opportunity to make a stop near you and help you spread the word.

Donate Unused Ad Space

If your business has a regular ad space in a newspaper or magazine that you're not always using, donate that space for Camp Mak-A-Dream to run an ad instead. Please contact Jennifer Benton, Director of Marketing & Special Events at (406) 549-5987 or jennifer@campdream.org if you have space you'd like to donate.

Corporate Matching

Many companies have a matching gift program that can match all or a portion of employees' donations to charitable organizations. Next time you make a donation to Camp Mak-A-Dream, ask your employer if your company offers a matching gift program, and if so, how you can obtain a form to make your donation go even further.

Volunteer at Camp

There are a number of ways that you can volunteer with us. Spend an amazing week at camp as a Cabin Counselor, Program Assistant, Dream Team Member, Activity Presenter or as a member of our Medical Staff.

- ★ Cabin Counselors work in supporting and assisting campers 24 hours a day. They sleep in the cabins with campers, participate in daily and evening activities, and offer continuous support, encouragement and companionship to participants throughout the week.
 - ★ Program Assistants help to organize the diverse activities we offer at Camp, including art projects, outdoor recreation and special evening activities such as dances and campfires. The creative and enthusiastic are encouraged to apply for this position.
 - ★ Dream Team members work "behind the scenes" helping in the kitchen, dining room and lodge, doing everything from setting the tables to chopping vegetables for the salad bar. We couldn't do it without these hardworking folks! If you are interested in helping out but want to stay out of the spotlight, this is the position for you!
- Applications for the above positions are available on our Web site at www.campdream.org or by calling our office at (406) 549-5987.*
- ★ Presenters are individuals or groups with a special skill or service they would like to offer our participants. Presenters generally come to camp for a morning or afternoon session and offer educational or activity-based services ranging from digital photography to art therapy to Dutch oven cooking. If you would like more information on being a presenter at one of our camps, contact Beth Martin at beth@campdream.org or by calling the foundation office.
 - ★ Medical Staff (medical professionals only): Each Camp session, we select a group of doctors and nurses to review camper medical files, administer medications and handle medical emergencies 24-hours a day. If you would like more information on being a Medical Staff volunteer, please call the foundation office.

Welcome New Staff

Erin Rome, *Chef/Kitchen Manager*

Erin came to Camp Mak-A-Dream in August 2007 after graduating from the Western Culinary Institute's Le Cordon Bleu Program in Portland, OR and working in the hospitality business there. Erin lived in Alaska for 20 years where she worked for the Boys and Girls Club and coached soccer, basketball and youth bowling. She was also selected as the 2004 International Youth Leader of the Year for the United States Bowling Congress. Erin's dream of living in Montana came true when she came to work for Camp, where she is now close to her family and enjoys her many hobbies—quilting, bowling, traveling, whitewater rafting and exploring new culinary recipes.

Denise Small, *Administrative Assistant*

Denise joined us in January 2008. She is a Missoula Native, whose Montana roots date back to the 1800s. Her background as an administrative assistant is in healthcare, government and politics. She enjoys downhill skiing, big-game hunting, hiking and camping. When not watching her youngest niece and nephew play soccer and basketball, Denise can be found reading, crafting, and spoiling her two cats. Her greatest joy is her family, and she dearly loves interacting with children. Denise's favorite job duties are those in which she serves her colleagues and campers/families. She feels very blessed to be part of Camp!

Executive Director's Report

It is hard to believe yet another winter has passed as we are about to enter the fourteenth year of fulfilling Harry and Sylvia Granader's dream. To date, over 4,000 participants have experienced this one-of-a-kind place—Camp Mak-A-Dream in Gold Creek, Montana. From swimming to fishing, music to camping, art to nature, Camp prides itself in bringing together groups of very different people facing similar battles into one majestic setting to form a cohesive, supportive community. The relationships formed here last well beyond the time spent at Camp. Frequent phone calls, e-mails, and chat group discussions follow the Camp experience—reminders of all that Camp brings to so many lives.

I'd like to thank everyone for your contribution to Camp Mak-A-Dream. Whether you've volunteered your time, donated money, or participated in one of our programs, you have added something significant to Camp Mak-A-Dream's legacy.

In this uncertain economic year, I'm asking for your support so that we may continue offering and growing our programs. Please help us spread the word and carry on the mission of Camp Mak-A-Dream. There are many things you can do to help, several of which are outlined in this newsletter. Please contact me, or a member of our staff, if you would like to get involved and make a difference in the life of someone affected by cancer.

On behalf of our entire dedicated staff, I would like to wish you a wonderful and healthy summer!

Stuart J. Kaplan, MD

Adult Cancer Retreats at CAMP MAK-A-DREAM

Each fall at Camp Mak-A-Dream, we offer multiple-day retreats for adults with cancer. If you or someone you know might be interested in attending either of these retreats, please let us know or have them get in touch with us for more information and a registration form. Retreats include all accommodations, meals and retreat activities, plus transportation from the Missoula airport to the Camp facility in Gold Creek, 65 miles east of Missoula.

SEPTEMBER 4 – 8, 2008
12th annual Ovarian Cancer Retreat
\$150.00

OCTOBER 9 – 12, 2008
13th annual Women's Cancer Retreat
\$150.00

For more information, contact Jennifer Benton at:
Phone (406) 549-5987
Fax (406) 549-5933
jennifer@campdream.org
www.campdream.org

RETREAT ACTIVITIES WILL INCLUDE:

- ★ Workshops ★ Resource information
- ★ Fabulous food ★ Guest speakers
- ★ Recreational activities
- ★ Beautiful cabins
- ★ Networking opportunities
- ★ Art studio sessions ★ Fireside chats
- ★ Small group discussions
- ★ Entertainment

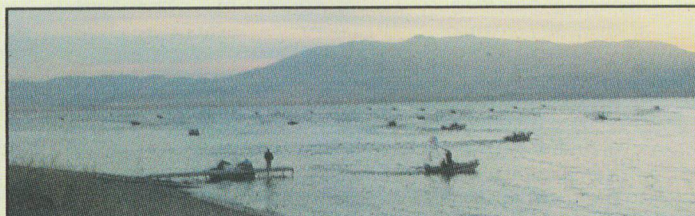


SPECIAL EVENTS – 2008

Something Special for Women, Spring Fling, April 30

Camp Mak-A-Dream – Gold Creek, MT

- ★ Dinner hosted by local women at beautifully decorated tables.
- ★ Limited space available and advance reservations required.
- ★ For more information, contact the Camp Mak-A-Dream office at (406) 549-5987.



Walleye Fishing Benefit, May 31

Put on by Montana PikeMasters & Walleyes Forever
Canyon Ferry Reservoir – Helena, MT

- ★ Walleye fishing tournament, entry fee \$60 per boat (100 boat limit).
- ★ Proceeds from tournament will be donated to Camp Mak-A-Dream.
- ★ For more information or to enter, visit www.walleyesforever.com or www.pikemasters.com.
- ★ Tournament director, Peggy Lawyer, can be reached at (406) 628-2141.



RATPOD, 7th annual June 28

Ride Around
The Pioneers in One Day –
Big Hole Valley, MT

- ★ 130-mile bicycle ride around the Pioneer Mountains, starting and ending at UM Western in Dillon.
- ★ Riders pay a registration fee and are asked to raise donations for Camp with great prizes going to the riders who raise the most money.
- ★ To make a donation or for more information, please visit www.ratpod.org.





Charity Golf Event Continues to Help Camp Efforts

In May of 1998, our family started on a rollercoaster ride that would take us through the extremes of heartbreak and joy. Following a colonoscopy, our mother, Patsy O'Neill, was diagnosed with Stage III colon cancer at the age of 69. One year later, we lost her.

Most people who knew our mother would agree that she was a character; but a character who cared a great deal about others and made it a priority to help them anytime she could. Following her death in 1999, her extended family members wanted to find a fun way to remember her and give something back to the community in her memory. Besides spending time with family, playing bridge and her involvement in the Holy Spirit Catholic Community, Mom liked nothing better than to spend time with her good friends—and if she could sneak a round of golf in at the same time, all the better. Thus, the Patsy O'Neill Charity Classic (POCC) was born and has grown beyond our wildest dreams, thanks to the support we receive from our sponsors and tournament/auction participants.

POCC is a charity event honoring Patsy O'Neill by supporting some very deserving organizations. The event, held at the Butte Country Club in Butte, Montana, is centered

around a golf tournament and focused on fun. The POCC is organized and implemented by the POCC Organizing Committee made up of some of Patsy's family members.

The net income from our charity event is allocated to organizations predefined on an annual basis by the POCC Organizing Committee. Our primary recipients have been Camp Mak-A-Dream and Easter Seals/Highlands Hospice of Butte because we support their missions and believe our mother would have as well.

The POCC is a one-day event that includes an 18-hole team scramble, dinner and hosted bar, raffles, contests with prizes, a silent auction and a live auction. Plans are under way for our ninth POCC to be held on July 11, 2008.

Everyone at Camp Mak-A-Dream would like to express our sincere gratitude for the amazing efforts and generosity of the O'Neill, Schulte and Petritz families who have contributed over \$135,000 to Camp since 2000 as a result of this great event. On behalf of the hundreds of young cancer patients whose lives have been impacted by your good deeds...thank you from the bottom of our hearts!

A Message from Our Founder

Dear Friends,

This year marks the fourteenth season of Camp Mak-A-Dream's programs for young cancer patients and survivors from all across the country, and it would not be possible if it weren't for the generous support of so many people. I want to personally thank everyone who has helped provide a memorable Camp experience for our campers.

Whether you have volunteered your time, made a financial contribution, donated supplies to the camp, attended a special event or helped us spread the word about Camp in your community, you have once again made this dream possible for many children and young adults with cancer throughout the country.

Each year at Camp Mak-A-Dream our campers take home with them new friendships, self-assurance and wonderful memories. This summer is sure to be no exception.

Thank you for your continued love and support.

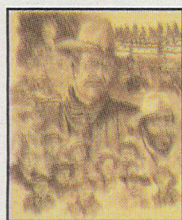
Sylvia Granader

9th annual Patsy O'Neill Golf Classic, July 11

Butte Country Club – Butte, MT



- ★ 18-hole scramble at Butte Country Club.
- ★ Silent & live auctions, plus dinner following golf.
- ★ Event hosted & organized by the O'Neill, Petritz & Schulte families in memory of their mother, Patsy O'Neill.
- ★ Call Mary Petritz at (406) 494-8253 for more information or to register.



Tim Joyner John Wayne & the Cowboys Prints

Tim Joyner has been painting professionally for many years, working in a variety of mediums including pencil, scratchboard, painting, glass etching, ceramic and bronze sculpture. His work reflects his interests in wildlife and the Western way of life and can be found in a number of galleries around Montana. Tim's work has been included in the CM Russell Art Show in Great Falls and the Spokane Art Show. One of his latest original pieces features characters from John Wayne and the Cowboys and was created for Camp Mak-A-Dream's gala auction held in February. Tim is now offering a limited edition of prints of this piece (16" x 20" acrylic), for \$100 each and is donating 50% of each sale to Camp Mak-A-Dream. To order a print or learn more about Tim's work, please visit www.joynerart.com.

Big Sky Foxtrotter Association Horse Show & Concert, July 10 – 12

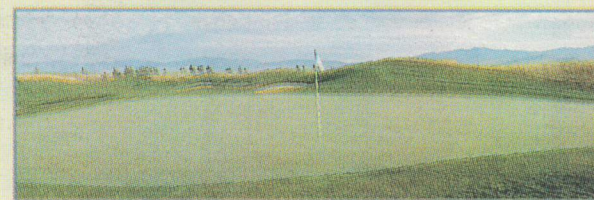
Sapphire Arena – Corvallis, MT

- ★ 14th annual BSFTA National Points Horse Show.
- ★ Concert on July 12 by Ken Overcast, the "Montana Cowboy" musician, storyteller and poet.
- ★ Tickets are \$20/person and available through the BSFTA at www.bigskyfta.org.
- ★ Proceeds from the concert ticket sales will benefit Camp Mak-A-Dream.

3rd annual Vintage Snowmobile National Show July 25 – 27

Kootenai Co. Fair Grounds – Coeur d'Alene, ID.

- ★ Annual show featuring vintage, classic, antique and exotic snowmobiles from across the US.
- ★ Private show and reception on July 25, open to the public July 26 – 27.
- ★ Sponsored by the Western States Vintage Snowmobile Association.
- ★ For more information, visit www.wsvsa.com or call (208) 309-1750.



Restore the Dream Golf Tournament August 20

The Ranch Club – Missoula, MT



- ★ Registration fee is \$175/person or \$700/foursome and includes golf, lunch, official shirt and chance at great prizes. Field is limited to the first 128 players to register and pay.
- ★ Live auction, silent auction, prizes.
- ★ Corporate and hole sponsorships available; please contact us for more information.
- ★ Partnership event between Camp Mak-A-Dream and Dayspring Restoration of Missoula.



Thanks to The Ranch Club for hosting and helping underwrite this event.

For additional information about any of these events, or for information about what you can do to support Camp Mak-A-Dream in your own community, please contact Jennifer Benton at (406) 549-5987 or jennifer@campdream.org.



Children's Oncology Camp Foundation
 P.O. Box 1450
 Missoula, MT 59806-1450

CAMP MAK-A-DREAM WISH LIST 2008

Art Studio

Nylon, hemp, silk and leather cord for jewelry making
 Sharpie pens in assorted colors
 Glass beads
 Jewelry making tools & findings
 Weaving yarn
 Paint brushes (various sizes)
 Acrylic & Tempura paint

Camp Activities & Programs

DVD movies (rated G and PG)
 Costumes for dress-up
 Disposable cameras
 Blank journal books (styles for boys & girls)
 Aluminum target-point arrows (archery)
 Yoga mats
 Vest style PDF (life jackets) – in good condition
 Ping-pong paddles & balls
 New decks of playing cards
 Plain white cotton t-shirts (child and adult sizes)
 Portable CD players (boom box style)

Small carnival prizes (for ages 6 – 17)

Velcro catch ball sets
 Walking/hiking sticks

Decorations

New candles (taper/votive/pillar)
 Theme decorations for 10 large dining tables

Gift Cards to Missoula Retailers

Costco
 Home Depot
 Lowe's
 Michaels Arts & Crafts
 Wal-Mart
 Walgreens Drug Store
 Target
 Shopko
 CVS Pharmacy
 Visa/MasterCard

Office Supplies & Equipment

Card stock in assorted colors
 Nice, decorative 8.5" x 11" paper
 Motion night-lights with bulbs
 Recordable blank CDs & plastic cases
 Small alarm clocks
 Mailing labels (Avery #5160, 30/page)
 Catalog size mailing envelopes (9" x 12" and 10" x 13")
 Large stacking storage containers with lids
 Shade tent/canopy structures (10' x 10' or 12' x 12')
 Unopened first aid kits
 Batteries (AA, C, D, 9V)

Housekeeping

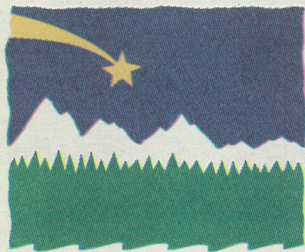
Standard size bed pillows

Larger item(s)*

Eight passenger mini-vans (2)
 Small, freestanding commercial freezer
 Buffet soup warmers

*Please call for details

There are many everyday items needed at Camp. If you would like to donate anything from our wish list, you can drop it by our foundation office in Missoula, or mail it to us at: Camp Mak-A-Dream, PO Box 1450, Missoula, MT 59806-1450. Donations may also be tax-deductible. For more information or with questions, please call (406) 549-5987.



**CAMP
 MAK-A-
 DREAM**

Mail to:
 Camp Mak-A-Dream
 P.O. Box 1450
 Missoula, MT 59806
 Children's Oncology
 Camp Foundation
 is a 501(c)(3)
 non-profit corporation.
 Contributions are
 tax deductible.
Tax ID # 81-0472959
Spring 2008 / Issue 20

Camperships, Donations and Memorials

Help make a dream come true for a child or young adult with cancer. All gifts will be acknowledged with a keepsake card.

Your Name: _____

Address: _____ Phone #: _____

City/State/Zip: _____

Camperships: I would like to donate ____ Campership(s) at \$500 each (sponsors one camper for one week).

Please include ____ engraved brick(s) at \$25 each. (One brick per campership donation, please.)

Name(s) to appear on brick(s): (Maximum of 30 characters) _____

General Donations: I would like to make a donation in the amount of _____

Memorials: This gift is made in ____ honor ____ memory of _____

Given by _____

Send keepsake memorial card to:

Name(s): _____

Address: _____ Phone #: _____

City/State/Zip: _____

TOTAL AMOUNT ENCLOSED \$ _____ Paid by: Cash ____ Check ____

MasterCard ____ Visa ____ American Express ____ Discover ____

Account #: _____ Expires: _____

Signature: _____