

THE DREAMCATCHER

CAMP MAK-A-DREAM ★ GOLD CREEK, MONTANA



OUR MISSION

Camp Mak-A-Dream will provide a medically supervised, cost-free Montana experience, in an intimate community setting, for children, young adults and families affected by cancer.

2007 Schedule

January 3-10

Young Adult Conference
Young adults with cancer (ages 19 to 30)

May 16-21

Young Adult Survivors Conference
Young adult cancer survivors (20s and 30s)

July 3-10

Teen Camp
Teens with cancer (ages 14 to 18)

July 14-21

Siblings Camp
Siblings who have a brother or sister with cancer (ages 6 to 17)

July 25-August 1

Kids Camp
Kids with cancer (ages 6 to 13)

August 4-11

Young Adult Conference
Young adults with cancer (ages 19 to 25)

September 6-10

11th Annual Ovarian Cancer Survivors Retreat
Women diagnosed with ovarian cancer

October 11-14

12th Annual Women's Cancer Retreat
Women diagnosed with cancer

FUTURE PROJECTS AND NEW ADVENTURES

There is always a lot going on at Camp Mak-A-Dream — preparations for upcoming camp sessions, fund-raising events and spreading the word about Camp across the country. But there are several things going on behind the scenes as well, and we'd like to share a few details about some of the projects that are in the works.



Granader Memorial Gardens

Remembering campers who are no longer with us is an important part of every camp session at Camp Mak-A-Dream. The Granader Gardens will be located in a somewhat secluded area of campus, adjacent to our amphitheater; it will be a place where anyone can go to reflect, remember, share stories and memories, or simply just be.

Items within the gardens, such as trees, benches, fountains and other structures, will be available for purchase as memorials in the near future.

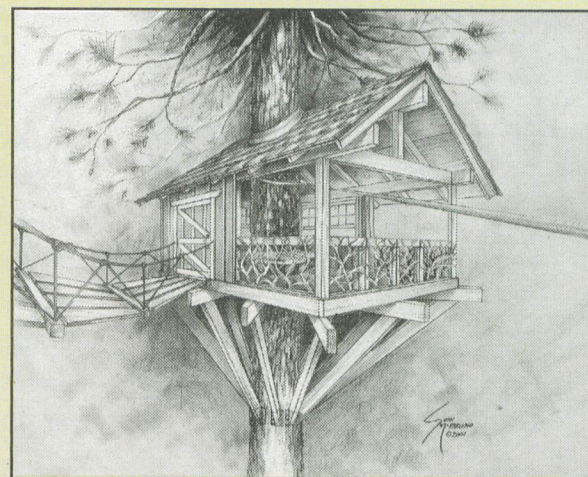
Sidewalk Replacement Project

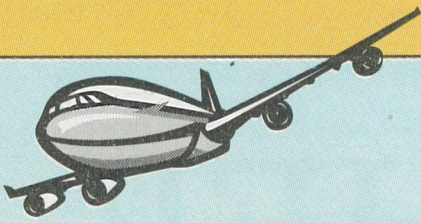
Safety is of the utmost concern at Camp — always. And after several years in our harsh Montana weather, our current sidewalks on campus are in need of replacement. This is a major project that will require significant resources, but we hope to secure those resources and begin the project in the spring, completing it prior to the start of our summer camp season. If you're interested in helping fund this project, or know of someone who may be, please call us to discuss that possibility.

Tree House Zip-Line

Another exciting project we're hoping to add at Camp is a tree house with a zip-line. We currently have both a ropes challenge course and a climbing wall, but some of our campers are either too young or not physically able to take part in those activities — and both are often a highlight of Camp for many of our participants. This will add a similar activity that is a bit less physically demanding and would be accessible to all campers. It's a zip-line — and if you've never tried one, you're missing out! If you would like to learn more or are interested in supporting the tree house zip-line project, we'd love to hear from you!

For more information on any of these projects, please contact Stu Kaplan at (406) 549-5987, or by email: stu@campdream.org.





Help Someone Get to Camp

by Donating Extra Frequent Flyer Miles

If you have 25,000 or more unused frequent flyer miles, we'd love to talk to you!

Camp Mak-A-Dream can utilize miles in blocks of 25,000+ on most airlines. The airlines that service Missoula, Montana, include Northwest/KLM, Delta/SkyWest, United and Horizon/Alaska Air. We are also happy to accept any transferable discount coupons, codes or other special offer vouchers.

Donated miles help us:

- ★ Get campers to Camp from all across the country
- ★ Allow staff to travel to promote Camp and raise funds
- ★ Bring in professional presenters and speakers for our programs

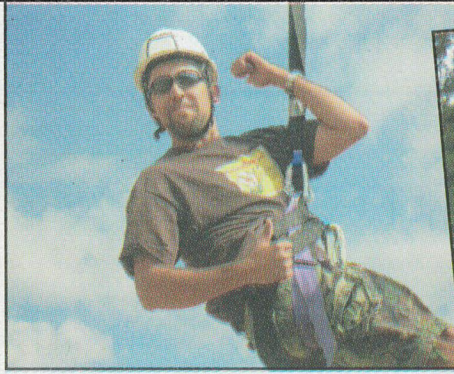
Your gift of 25,000 miles (or more) means a child or young adult who may not otherwise be able to attend Camp ... can!

If you're interested in donating miles, please contact **Shirley Hummer** in the Camp Mak-A-Dream office at (406) 549-5987 or send an e-mail to shirley@campdream.org.

Through the Eyes of a VOLUNTEER



Last summer, when I was volunteering at a summer Young Adult Conference (YAC) at Camp Mak-A-Dream, I met a volunteer named Mary, a Southern girl who had never been to Montana and had never experienced cancer in young people before. Throughout the week, I watched her find her way through the emotions of not just the typical dramas of being a young adult, but added to that the burdens and complications of serious illness. By the end of the week, she was visibly transformed. On the plane ride home from Camp, she talked about how she had found strength in herself that she hadn't expected. She reminded me of myself the first time I volunteered here for a young adult session back in 1997. My experience entering Camp Mak-A-Dream was a bit different — I'd dealt with my own cancer 25 years ago as a 16-year-old. Still, like Mary, the experience I had that first year transformed me forever.



It's a cliché to say how difficult it is to truly describe the impact that Camp Mak-A-Dream has on me as a volunteer, so I won't cop out so easily. It's all too easy in our non-camp worlds to forget that life isn't just about deadlines and pay raises. It's also too easy to overlook quiet stories of strength and struggle in everyday life. Camp Mak-A-Dream is my inoculation against cynicism and materialism, every single year. The summer I first volunteered, I met a young man named Josh. Due to his treatment for ALL (a form of leukemia) he had emerged in remission, but with avascular necrosis — a term I'd never heard before — in his hips. He spent most of the week in a wheelchair due to the pain, feeling sorry for himself and mourning the losses he'd sustained. The most significant loss was baseball. He had been granted a tryout with a semi-professional baseball team before his diagnosis.

He connected with me and I worked really hard with him — mostly listening. At the end of the week, he had a surprise for me that I'll remember forever. At the dance at the end of the week, about halfway through, I heard him call my name. I turned around to see him out of his chair, dancing with a young woman, yelling joyfully, "Hey, Marc, you're pretty short!"

Over the 10 years since I started volunteering, I've been back nearly every summer, once even as a participant in the Young Adult Survivors Conference. I've met the most amazing young people — some with impressive musical talents, some athletically gifted, others who have unique abilities to put emotions to words in poetry. But the most amazing thing that I witness is the kindness. There is a wide range of disease effects, some causing more or less obvious scarring or disfigurement, and some causing cognitive or emotional changes. But in nearly every case, the theme has always been one of patience, acceptance and inclusion. I've seen the quiet heroism in a young woman who secretly knew she was terminally ill; yet she was the life of her cabin and the cheerleader for those who were on the periphery. I've felt grievous loss when I learned about people who didn't make it. I've repeatedly seen young people doing things they never thought they could do and perhaps never would have tried without the support of their

new friends. Witnessing it all has been transcendent. How can you go back home and still get upset about someone cutting you off on the freeway?

When people hear about my volunteer experiences at Camp, many ask how I can do it. They think it must be depressing and particularly hard for me because I wouldn't want to be reminded of my experience with cancer. They don't understand that that is the very reason I come to Camp. It does remind me of my experience with cancer, which was a depressing time, but Camp is anything but a depressing place. When I was being treated, I had no opportunity to meet others my age dealing with similar challenges. These young people benefit just by being with each other. I see my role as a facilitator of those relationships, just as the Camp, the Montana

sky, the rafting trips, the ropes courses and the dances are just facilitators. It's therapeutic for me to watch it unfold every summer. I come back home every time with renewed sense of meaning in my own life and a head-shaking sense of wonder at the powerful moments I've just witnessed. Each year I consider whether it's time for me to move on to another camp – I know there are many across North America and I've been invited to volunteer at several. But Camp Mak-A-Dream is home, and the Young Adult Conference is incomparable to anything I've seen out there. Is it any wonder I keep returning?

*Marc Huber
Camp volunteer and cancer survivor
Chapel Hill, NC*

Hold Your Next Event at Camp Mak-A-Dream

Camp Mak-A-Dream may be the perfect place to hold your next group function. Our fully accessible facility sits on 87 beautiful acres in Gold Creek, Montana, and is available to outside groups for rental in the off-season, late August through mid-June.

Amenities include:

- ★ Beautiful setting
- ★ Four modern cabins with common rooms and fireplaces
- ★ Outdoor area with BBQ grills and picnic tables
- ★ Heated outdoor pool, hot tub, recreation room, large-screen TV, DVD and VCR players
- ★ Lodging for up to 110 people
- ★ Full food and beverage service
- ★ Break-out meeting rooms
- ★ Specialty program areas: arts and crafts building, archery range, climbing wall
- ★ Great facilities for meetings, retreats, weddings and other large gatherings



Our health center building is also available for either day or overnight use and is an ideal setting for small group retreats, company meetings, board functions and more. Perfect for groups of six to 10 people.

Take advantage of private sleeping rooms, a conference room with high-speed Internet access, a wide-screen TV and A/V equipment, and a fully equipped kitchen.

For more information on renting Camp Mak-A-Dream's facility and available dates, please contact Bill Lohr, Hospitality Coordinator, at (406) 288-3030 or by e-mail at cmad@blackfoot.net, or visit our Web site at www.campdream.org.

President's Message

Dear Friends,

Spring is right around the corner and we are getting ready to start our summer camps. It's a bittersweet feeling for us this year — our founder, Harry Granader, passed away in August and he will truly be missed. It was through his vision, passion and love of children that Camp Mak-A-Dream was formed.

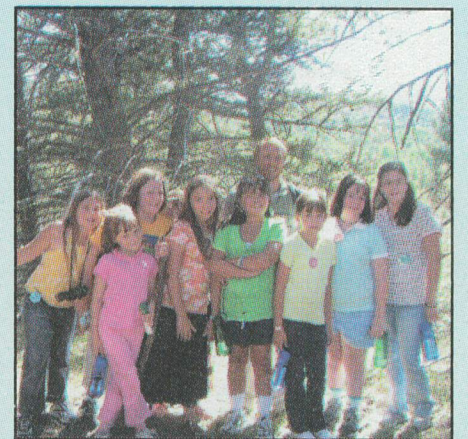
Harry's legacy is a dream that will live on forever through the hearts of all of the children, teens, young adults and adults who continue to grace our programs.

Camp is a special place that provides a special experience to very special people — a place where dreams come true and wonderful memories are made!

On behalf of the board of directors, thank you for your love and support!

Warmest regards,

Colleen Powers
President, Board of Directors



Children's Oncology Camp Foundation

CAMP MAK-A-DREAM 2007 Board of Directors

** Executive Committee Members*

Dee Dee Blaney

First American Title Co. of Montana

Mark Dvarishkis

Northwest Farm Credit Services

Sherry Granader

Self-employed nutritionist

*** Wayne Hiett**

Galusha, Higgins & Galusha

*** Bob Homer**

Bitterroot Motors

Pattie Ireland-Tornabene

Self-employed investor

Dorothy Irvine

Community volunteer

KK Jense

Jense, Inc.

*** Mike Juhola**

Essential Home Inspection

Jan Krystkowiak

ROI Direct Marketing

*** Cory Laird**

Verizon Wireless

Jordan Lind

ALPS

*** Doug McAlear**

American Home Mortgage

Nate McCarthy

Galusha, Higgins & Galusha

*** Will McCarthy**

WordenThane, PC

*** Colleen Powers**

Terry Payne & Co.

Todd Reed

Cherry Creek Radio

Chuck Sulkala

National Auto Body Council

ACME Body & Paint Co.

Judy Wahlberg

ReMax Realty

Tom Walsh

Montana Rail Link

Anne Wright

Registered Nurse

Foundation Staff

Stuart J. Kaplan, MD

Executive Director

Jennifer Benton

Director of Marketing & Special Events

Beth Martin

Camp Director

Shirley Hummer

Residential & Volunteer Coordinator

Bill Lohr

Hospitality Coordinator

Julie Hiett

Bookkeeper/Administrative Assistant

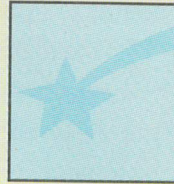
Jake Wood

Facility Manager

Campers REMEMBERED



Amanda Bunch
Spokane, WA
18 years old
December 30, 2006



Krystle Hughes
Wyoming, MI
19 years old



John Miller III
Missoula, MT
14 years old
January 5, 2007



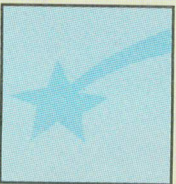
Andrea Elder
Montreal, Quebec,
Canada
24 years old
May 10, 2006



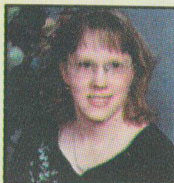
Christopher Jones
Paintsville, KY
22 years old
November 2006



Margaret Nehf
Schererville, IN
21 years old
April 2006



Jef Fields
Joshua, TX
19 years old
August 2, 2006



Carolyn Lisak
Burnsville, MN
21 years old
May 26, 2006



Amanda Stine
Manchester, NH
27 years old
November 6, 2006



Katie Jurek
Maplewood, MN
20 years old
March 2007



Michael Magdaleno
Oxford, MI
12 years old
November 2004



Will Vossen
Spicer, MN
25 years old
July 20, 2006



Kristen Forget
Easthampton, MA
19 years old
December 2006



Mary McMakin
Colstrip, MT
18 years old
December 31, 2006



Laura Wampler
Norton, VA
18 years old
May 10, 2006



Harry Granader Founder

Sadly, Harry Granader, the founder of Camp Mak-A-Dream, passed away in August. It was Harry's dream to give sick children the experience of a lifetime in Montana. Because of this dream, more than

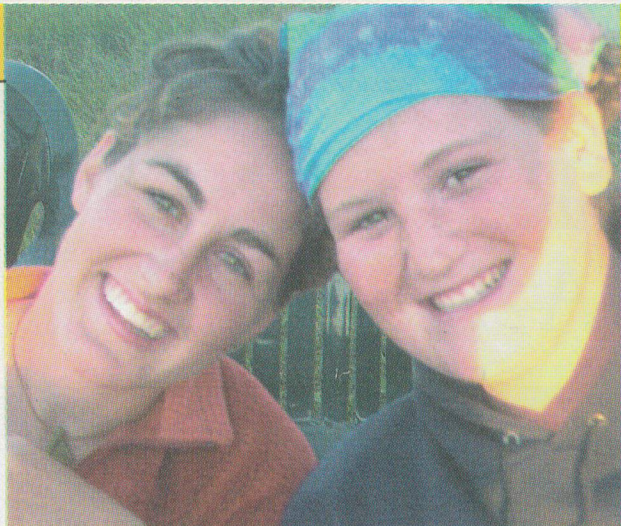
3,800 people whose lives have been affected by cancer have had the opportunity to do just that. Everyone at Camp Mak-A-Dream will remember Harry fondly and continue to keep his dream alive.



Helene Streit Office Volunteer

Camp experienced another great loss this year with the passing of Helene Streit. Helene volunteered in the Missoula office every Friday for the past 14 years. She exuded an amazing spark and genuine kindness, and

her presence is greatly missed. We want to express our gratitude for her years of dedicated service and the love she shared with those of us fortunate enough to know her.



HOW YOU CAN HELP

A Message from Our Founder

Sponsor a Camper with a Campership

Sponsor a child or young adult for a cost-free week of Camp with a \$500 "Campership" donation.

Please see form on the back cover of this newsletter for more information.

Make a Memorial or Honorarium Donation

Make a donation in memory of a friend or loved one, or in honor of a holiday or special occasion. Camp Mak-A-Dream will send a keepsake card to the family or honoree.

Please see form on the back cover of this newsletter for more information.

Make a Pledge or Planned Gift

Pledge an amount to be paid over a period of time (monthly, quarterly, annually). You can also designate Camp Mak-A-Dream as a beneficiary of your life insurance or in your will. Camp Mak-A-Dream is a proud participant in Legacy Montana (www.legacymontana.org). For more information, please contact us at (406) 549-5987.



Give an Item from Our Wish List

There are lots of everyday items and goods we need each camp season. You can help a lot by donating an item from our Wish List found on the back cover.

Display Our Literature

You can help us get the word out to possible campers, volunteers and donors by displaying a Camp Mak-A-Dream poster or brochures at your place of business or professional office.

Have Us Speak at Your Civic Organization or Business Meeting

We love to share what's happening at Camp Mak-A-Dream with members of different communities. If you're a member of a civic organization or would like to hear about Camp at your next business meeting, please contact Jennifer Benton at (406) 549-5987 to arrange a speaking engagement.

Rent Our Facility

You can rent the beautiful Camp Mak-A-Dream facility, late August through mid-June, for your next gathering or meeting. Please see page 3 for more information, or visit our Web site at www.campdream.org.

Donate Frequent Flyer Miles

Help us fly a child or young adult with cancer to Camp, bring in professional program speakers to conduct workshops, or allow our staff to travel and spread the word about Camp Mak-A-Dream, by donating frequent flyer miles. Your gift can help make attending Camp possible for someone who might not otherwise be able to get here. More information is available on page 2.

Host a Dream Tour

Are you a proud supporter of Camp Mak-A-Dream? Would you like to have the opportunity to let others know about the great work going on in Gold Creek, Montana? Consider hosting a Dream Tour. A Dream Tour is a virtual tour of Camp Mak-A-Dream that can take place in someone's home, a community center, or anywhere with a DVD player. It can take place as an informal dinner party, a lunch, a cocktail hour, a dessert social, or other creative get-together. If you are willing to host such an event, please contact Stu Kaplan at (406) 549-5987. We are traveling throughout the country in 2007, and would love the opportunity to stop near you and help you spread the word.

Volunteer

Spend the most incredible week imaginable by volunteering at Camp. You must be at least 18 years of age to apply and go through an extensive interview process.

There are a number of ways in which you can volunteer with us. Spend an amazing week at camp as a Cabin Counselor, Program Assistant, Dream Team Member, Activity Presenter or as a member of our Medical Staff.

- ★ Cabin Counselors work in supporting and assisting campers 24 hours a day. They sleep in the cabins with campers, participate in daily and evening activities, and offer continuous support, encouragement and companionship to participants throughout the week.
- ★ Program Assistants help to organize the diverse activities we offer at Camp, including art projects, outdoor recreation and special evening activities such as dances and campfires. The creative and enthusiastic are encouraged to apply for this position.
- ★ Dream Team members work "behind the scenes," helping in the kitchen, dining room and lodge, doing everything from setting the tables to chopping vegetables for the salad bar. We couldn't do it without these hardworking folks! If you are interested in helping out but want to stay out of the spotlight, this is the position for you!
- ★ Presenters — individuals or groups with a special skill or service they would like to offer our participants. Presenters generally come to Camp for a morning or afternoon session and offer educational or activity-based services ranging from digital photography to art therapy to Dutch oven cooking. If you would like more information on being a Presenter at one of our camps contact Beth Martin at beth@campdream.org or by calling the foundation office.
- ★ Medical Staff (medical professionals only) — each camp session, we select a group of doctors and nurses to review camper medical files, administer medications and handle medical emergencies 24 hours a day. If you would like more information on being a Medical Staff volunteer, please call the foundation office.

Call us for more information at (406) 549-5987. Applications are available on our Web site at www.campdream.org. We'd also love to talk with you if you're interested in volunteering in our foundation office in Missoula.

Dear Friends,

I want to express my gratitude for your support of Camp Mak-A-Dream—whether you have made a donation, volunteered your time, attended our special events or helped us spread the word about Camp in your community, you have once again made this dream possible for many children and young adults with cancer throughout the country.

Each year at Camp Mak-A-Dream our campers take home with them new friendships, self-assurance and wonderful memories. This coming summer will be no different in bringing joy to so many; however, our beloved Harry will be greatly missed. His presence at Camp has been a fixture these past 12 years and it won't be the same without him there.

Thank you for your love and support. We will all continue to carry on Harry's dream!

Sylvia Granader



Executive Director's Report

Dear Friends,

It has been a remarkable year for Camp Mak-A-Dream. We have now completed 13 seasons serving children and young adults affected by cancer. We are fortunate enough to hear almost daily from past participants, and it is heartwarming to learn how much the experience at Camp Mak-A-Dream has meant to them. Equally rewarding is knowing the friendships these young people make at Camp last well beyond their week in Montana, via phone calls, reunion visits, and the Internet.

In 1996, we were among the first to recognize the special needs of young adults with cancer when we implemented our first Young Adult Conference. Less than two months later, Lance Armstrong was diagnosed with cancer. His diagnosis gave the nation insight into the very special needs and unique issues facing young adults dealing with cancer. We have been fortunate to work closely with the Lance Armstrong Foundation for the past four years, and are honored to be charter members of the LIVESTRONG Young Adult Alliance. This organization is addressing issues such as the decreased survival rates of young adults with cancer (compared to children and older adults), the lack of adequate follow-up care, the difficulties in navigating the healthcare system for the survivors of young adult cancer, and the lack of support available to this group. The Lance Armstrong Foundation has collaborated with Camp Mak-A-Dream on the programming for our 2007 Young Adult Survivors Conference, which will include educational modules addressing practical issues facing these individuals. We are very proud to have the opportunity to work closely with the many good people at the Lance Armstrong Foundation and thank them for their support and guidance over the years.

The future of Camp Mak-A-Dream looks bright. We are beginning two major projects this year: the Granader Gardens and the Sidewalk Replacement Project (see cover story). We have begun a long-range planning process, which will focus on increasing national awareness of and support for Camp Mak-A-Dream. And in 2008, we plan to introduce a new program for survivors of brain tumors, another population with very unique needs and concerns.

On behalf of our board of directors, staff and, most of all, the campers at Camp Mak-A-Dream, I wish to thank all of you that have supported us in the past and ask those of you who have not to consider doing so. It is a gift to have the opportunity to bring these great young people together and allow them to feel part of a community. For many, it is a chance to feel normal for the first time in a long time.

Have a great year!
Stuart J. Kaplan, MD

Adult Cancer Retreats at CAMP MAK-A-DREAM

Each fall at Camp Mak-A-Dream, we offer multiple-day retreats for adults with cancer. If you or someone you know might be interested in attending either of these retreats, please let us know or have them get in touch with us for more information and a registration form. Retreats include all accommodations, meals and retreat activities, plus transportation from the Missoula airport to the Camp facility in Gold Creek, 65 miles east of Missoula. For an application, go to our Web site, www.campdream.org, and click on "Adult Retreats."

September 6–10, 2007

11th annual Ovarian Cancer Retreat
Cost: \$200

October 11–14, 2007

12th annual Women's Cancer Retreat
Cost: \$150

FOR MORE INFORMATION

Contact Jennifer Benton at:
Phone: (406) 549-5987
Fax: (406) 549-5933
E-mail: jennifer@campdream.org

RETREAT ACTIVITIES WILL INCLUDE:

- ★ Workshops ★ Resource information
- ★ Fabulous food ★ Guest speakers
- ★ Recreational activities
- ★ Beautiful cabins
- ★ Networking opportunities
- ★ Art studio sessions ★ Fireside chats
- ★ Small group discussions
- ★ Entertainment



SPECIAL EVENTS – 2007

In Light of Loss: A Family Retreat May 11–13

Put on by the Cancer Family Network
at Camp Mak-A-Dream

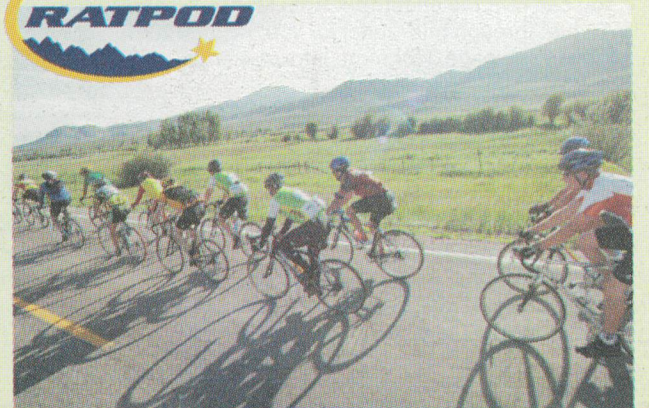
Cost-free weekend retreat for family members
who have lost a loved one to cancer

- ★ Program includes team building, cooking and communications
- ★ Contact Cancer Family Network at (406) 566-1050 for more information
- ★ Space is limited and advance registration is required

6th Annual RATPOD June 23

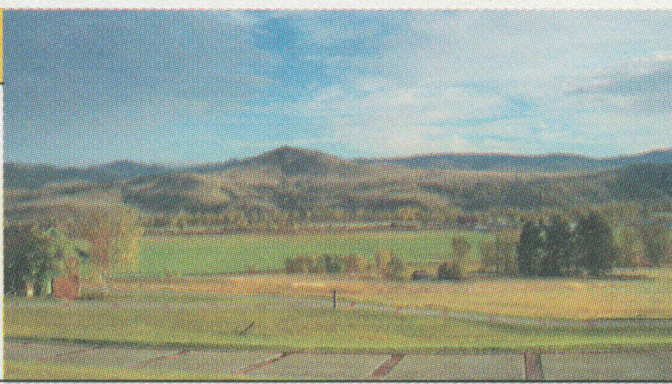
Ride Around The Pioneers in One Day –
Big Hole Valley, Montana

- ★ A 157-mile bicycle ride around the Pioneer Mountains, starting and ending at UM-Western in Dillon
- ★ Entry fee is \$80 (\$100 after May 1st) and includes the ride, a shirt and dinner both Friday and Saturday nights—registration deadline is June 10 or when we reach 450 registered riders



- ★ Riders are asked to raise donations for Camp with great prizes going to the riders who raise the most money
- ★ Registration and additional information on the RATPOD Web site at www.ratpod.org or by contacting Jennifer Benton at the Camp office at (406) 549-5987 or by emailing: jennifer@campdream.org.

Welcome to Our Newest Staff Members



Bill Lohr, Hospitality Coordinator

Bill Lohr joined the Camp Mak-A-Dream staff in July of 2006 as hospitality coordinator. In this position, Bill handles the coordination of food and beverages for all our camp sessions throughout the year, and also for outside groups who rent the camp facilities for meetings, retreats, weddings and other large gatherings. Bill comes to us with 25 years of food and beverage experience and has implemented many positive changes for the Camp. Bill and his wife Maggie have lived in Potomac for the past 10 years.

Julie Hiatt, Bookkeeper/Administrative Assistant

Julie was born and raised in Montana, living in Missoula for the last 18 years with her husband, Wayne, who also happens to be on the board of directors for Camp Mak-A-Dream. She has four sons ranging in age from 21 all the way down to six. Julie worked for Galusha, Higgins and Galusha for 14 years before heading to Partners Creative, where she stayed for three years. In mid-February, Julie came on board with Camp as our bookkeeper and administrative assistant. In her spare time she loves to golf and travel.

Beth Martin, Camp Director

Beth Martin joined Camp Mak-A-Dream as the residential director for the summer 2006 season and has recently moved into the position of camp director. Beth is originally from Massachusetts and moved to Missoula in 1997 to be part of the touring staff of the Missoula Children's Theatre. Beth spent the next six years working as tour manager for MCT, where she first became acquainted with Camp by presenting theatre workshops there. She always knew she wanted to do more than spend a few hours at a time with the special people she met at Camp and finally got her chance last summer. Beth feels extremely fortunate to be working with the dedicated, supportive individuals at the foundation office. In her free time she enjoys, running, hiking, cooking and spending time with Eric, Cirque and Flint (the "ditch kitty" found by participants in Gold Creek last October).

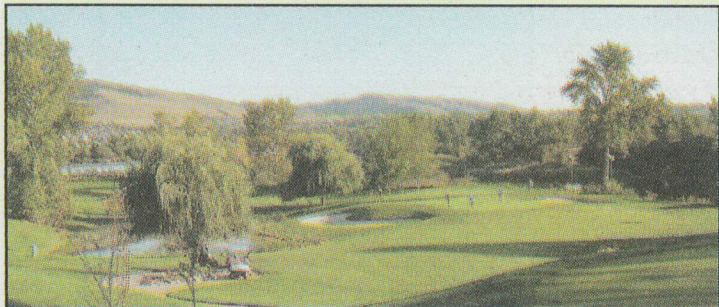
Good-bye to Bonnie Karrer

We would like to take this opportunity to thank Bonnie Karrer, who retired at the end of February after 10 years as Camp Mak-A-Dream's bookkeeper. She will be missed, and we wish her well in her retirement years!

Patsy O'Neill Golf Classic July 13

Butte Country Club – Butte, Montana

- ★ 18-hole scramble at Butte Country Club
- ★ Silent and live auction, with dinner following golf
- ★ Event hosted and organized by the O'Neill, Petritz and Schulte families in memory of their mother Patsy O'Neill
- ★ Call for more information or to register



Restore the Dream Golf Tournament Date TBA

Missoula, Montana

- ★ Individual golfers and teams of four players welcome; limited to first 130 registered players
- ★ Registration fee includes golf, lunch, official shirt and a chance at great prizes
- ★ Live auction, silent auction and prizes
- ★ Corporate and hole sponsorships available – please contact us for more information
- ★ Partnership event between Camp Mak-A-Dream and Dayspring Restoration of Missoula

Thanks to the Mary Wolf Rolfing Bogue Foundation for underwriting this event.

For additional information on any of these events, or for information on what you can do to support Camp Mak-A-Dream in your own community, please contact Jennifer Benton at (406) 549-5987 or by e-mail: jennifer@campdream.org.

6th Annual



Ride Around The
Pioneers in One Day

Big Hole Valley, Montana Saturday, June 23rd

WHAT IS RATPOD: 157-mile, single-day bicycling event

WHERE: Around the Pioneer Mountains in the Big Hole Valley

WHY: For a great cause. Riders are encouraged to raise donations for Camp. Prizes will be given to the top riders who raise the most money!

WHEN: Friday, June 22:

Check-in and pre-ride pasta dinner in Dillon, MT

Saturday, June 23:

RATPOD ride, followed by live music, BBQ dinner & prizes

HOW: Log on to www.ratpod.org for more information or to register, or call Jennifer Benton at (406) 549-5987, or e-mail: info@ratpod.org

COST: Registration fee is \$80 (\$100 after May 1st). Deadline is June 10 or when we reach 450 riders. Includes the ride, food and support on the route, shirt and meals on Friday and Saturday nights.

Sponsors of this year's event include:

Platinum Sponsors:

Home Health of Montana
Partners Creative

Gold Sponsors:

Missoula Anesthesiology
Missoula Bone & Joint

Silver Sponsors:

Bitterroot Resort
ClearChannel Radio
Clear Choice Health Plans
Community Medical Center

First National Bank
Five Valleys Urology
Great Harvest Bread Co.
Merrill Lynch
Montana Cancer Center
Montana Spring Water

Silver Sponsors (continued):

Rocky Mountain
Ear, Nose & Throat
Dr. Mike Peterson
Western Montana Clinic
Western Montana
Medical Association

Bronze Sponsors:

Big Sky Surgery Center
Locati Architects
Missoula Nissan
Patagonia Outlet
Sapphire Physical Therapy

Major In-Kind Support from:

Office Solutions
Dillon Subway



Children's Oncology Camp Foundation

P.O. Box 1450
Missoula, MT 59806-1450

CAMP MAK-A-DREAM WISH LIST 2007

Art Studio

Nylon & hemp cord for jewelry making
Sharpie pens in assorted colors
Glass beads
Jewelry-making tools & findings
Weaving yarn
Paint & brushes (various sizes)
Fleece material (1+ yd. pieces)

Camp Activities & Programs

DVD movies (rated G and PG)
Costumes for dress-up
Disposable cameras
Blank journal books
Aluminum target-point arrows (archery)
Adult size ski pants & gloves, NEW long underwear
Yoga mats

Decorations

New candles: taper/votive/pillar
Gift bags with handles – all sizes
Theme decorations for 10 dining tables

Gift Cards to Missoula Retailers

Home Depot
Lowe's
Michael's Crafts
Wal-Mart
Walgreen's
Target
Shopko
CVS Pharmacy
Visa/MasterCard

Office Supplies & Equipment

Card stock paper in assorted colors
Nice, decorative 8.5"x11" paper
Motion night lights with bulbs
Recordable blank CDs & plastic cases
Small alarm clocks
Mailing labels (Avery #5160, 30/page)
Large storage containers with lids

Housekeeping

Twin-size blankets (for bunk beds)
Standard-size bed pillows

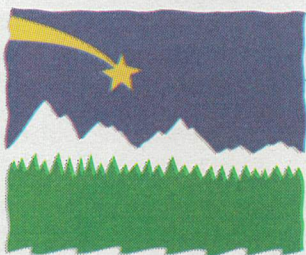
Larger Items

**Please call for details on these items*
Two eight-passenger mini-vans

Food and Beverage Equipment

Small free-standing commercial freezer
Mobile banquet food warmer (hotel pan size)
White chefs' coats – new or used (assorted sizes)
Buffet soup warmers
Portable sectional staging, adjustable height preferable

There are lots of everyday items needed at Camp. If you would like to donate anything from our wish list, you can drop them by our foundation office in Missoula, or mail them to us at Camp Mak-A-Dream, P.O. Box 1450, Missoula, MT, 59806-1450. Donations may also be tax-deductible. For more information please call (406) 549-5987.



CAMP MAK-A- DREAM

Mail to:

Camp Mak-A-Dream
P.O. Box 1450
Missoula, MT 59806

Children's Oncology
Camp Foundation
is a 501(c)(3)

non-profit corporation.
Contributions are
tax deductible.

Tax ID # 81-0472959

Spring 2007 / Issue 19

Camperships, Donations and Memorials

Help make a dream come true for a child or young adult with cancer. All gifts will be acknowledged with a keepsake card.

Your Name: _____

Address: _____ Phone #: _____

City/State/Zip: _____

Camperships: I would like to donate ____ Campership(s) @ \$500 each (sponsors one camper for one week).

Please include ____ engraved brick(s) at \$25 each. (One brick per campership donation, please.)

Name(s) to appear on brick(s): (Maximum of 30 characters) _____

General Donations: I would like to make a donation in the amount of _____

Memorials: This gift is made in ____ honor ____ memory of _____

Given by _____

Send keepsake memorial card to:

Name(s): _____

Address: _____ Phone #: _____

City/State/Zip: _____

TOTAL AMOUNT ENCLOSED \$ _____ Paid by: Cash ____ Check ____

MasterCard ____ Visa ____ American Express ____ Discover ____

Account # _____ Expires: _____

Signature: _____