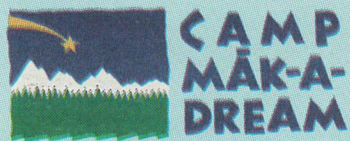


# THE DREAMCATCHER

CAMP MAK-A-DREAM ★ GOLD CREEK, MONTANA



## OUR MISSION

Camp Mak-A-Dream will provide a medically supervised, cost-free Montana experience, in an intimate community setting, for children, young adults and families affected by cancer.

## 2006 Schedule

### January 3-10

Young Adult Conference  
Young adults with cancer (ages 19 to 25)

### May 17-22

Young Adult Survivors Conference  
Young adult cancer survivors  
(20s and 30s)

### June 27-July 4

Teen Camp  
Teens with cancer (ages 14 to 18)

### July 8-15

Young Adult Conference  
Young adults with cancer (ages 19 to 25)

### July 18-24

Siblings Camp  
Siblings who have a brother or sister with cancer (ages 6 to 17)

### July 28-August 4

Kids Camp  
Kids with cancer (ages 6 to 13)

### August 8-15

Young Adult Conference\*  
Young adults with cancer  
(\*ages 19 to 30)

### September 7-11

10th Annual Ovarian Cancer Survivors Retreat  
Women diagnosed with ovarian cancer

### October 5-8

11th Annual Women's Cancer Retreat  
Women diagnosed with cancer

## A SWEET NEW RIDE FOR CAMPERS

After years of needing a reliable way to transport our participants, Camp Mak-A-Dream recently received a very generous gift of a brand-new, custom-built bus! A lot of hard-working and generous businesses and individuals who are part of the automotive collision repair industry, from all across the country, made this possible.

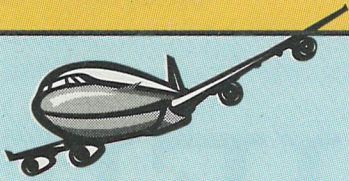
Camp Mak-A-Dream would like to thank members of the industry, as well as the National Auto Body Council (NABC), the Auto Body Parts Association (ABPA), 3M, Calaway Systems, the Professional Decal Application Association, and these generous donors for our wonderful, sweet new ride:

- 3M Automotive
- ABRA Auto Body & Glass
- Action Crash Parts
- ADP Claims Solutions Group
- Akzo Nobel Coatings
- BASF Corporation
- Caliber Collision Centers
- Car-O-Liner
- Celette
- City Body & Frame
- CSi Complete
- DuPont Performance Coatings
- Fix Auto USA
- Ford Motor Company
- Genera Corporation
- International Auto Crafters
- Keystone Automotive
- MAXZONE Vehicle Lighting Corp.
- Mitchell International
- Motor Information Systems
- Pacific Auto Company
- PPG Industries
- Sabry Lee Inc.
- Sherwin Williams
- State Farm Insurance
- Sterling Collision Centers
- Universal Underwriters
- VengUSA



Special thanks also to these Missoula businesses for donating their services:

- Bretz RV
- Diamon-Fusion USA Montana



## Help Someone Get to Camp

by Donating Extra Frequent Flyer Miles

If you have 25,000 or more frequent flyer miles, we'd love to talk to you! Camp Mak-A-Dream can utilize miles in blocks of 25,000+ from most airlines. The airlines that service Missoula, Montana, include Northwest/KLM, Delta/SkyWest, United and Horizon/Alaska Air, but we can accept miles from other airlines as well. Just call us and we'll tell you how to put those miles to good use.

### Donated miles help:

- ★ Bring campers to Camp from all across the country
- ★ Allow staff to travel to promote Camp and raise funds
- ★ Bring in professional presenters and speakers for our programs

25,000 miles = A child or young adult who may not otherwise be able to attend Camp . . . can!

*If you're interested in donating miles, please contact Shirley Hummer in the Camp Mak-A-Dream office at (406) 549-5987 or e-mail shirley@campdream.org.*

Won't you help us serve your family, friends or members of your community?

Please pass this newsletter along to someone you know with cancer.

### For more information:

Children's Oncology Camp Foundation  
Camp Mak-A-Dream  
P.O. Box 1450 / Missoula, MT 59806  
Phone: (406) 549-5987  
Fax: (406) 549-5933  
E-mail: camp@montana.com  
Web: www.campdream.org

## CAMP MAK-A-DREAM OFFERS PROGRAMS FOR CANCER PATIENTS, SURVIVORS AND FAMILY MEMBERS OF ALL AGES



### TEENS (ages 14 to 18) Free of Cost

Teen Camp is designed for teenagers in various stages of cancer therapy. Our goal is to give teens with cancer a chance to feel "normal" and to build self-esteem, confidence and a sense of independence. These sessions include activities like swimming, campouts, art projects, archery, climbing wall, high-ropes course, cabin chat discussions and guest speakers.

### KIDS (ages 6 to 13) Free of Cost

Kids Camp is designed for children in various stages of cancer therapy. We give them a week of "normalcy" and a chance to make new friends, try new things, experience fun camp activities and just be kids. Kids Camp includes activities like swimming, campouts, carnival night, art projects, archery, climbing wall and cabin chat discussions.

### SIBLINGS (ages 6 to 17) Free of Cost

Siblings Camp is a unique camp experience for young people who have (or have lost) a brother, sister or parent with cancer. We believe siblings need the chance to meet other individuals their own age who understand what they are going through and, for a time, to be the center of attention. Siblings Camp is filled with activities like swimming, campouts, carnival night, art projects, archery, climbing wall and cabin chat discussions.

### YOUNG ADULT CONFERENCE — YAC (ages 19 to 25) Free of Cost

Young Adult Conferences are a blend of educational and recreational activities aimed at helping young adults connect with others their own age who are going through similar experiences. Educational workshops on relationships, fertility, insurance, employment, late effects and more are offered, in addition to traditional recreational camp activities.

### YOUNG ADULT SURVIVORS CONFERENCE — YASC (20s and 30s) Free of Cost

The Young Adult Survivors Conference is an educational event for survivors of cancer who are in their 20s and 30s and at least two years out of treatment. Discussion topics may include navigating the health-care system, advocacy, nutrition, exercise, dating, family/peer relationships, insurance and employment.

### OVARIAN CANCER RETREAT (adult women) Nominal Registration Fee

Our annual Ovarian Cancer Retreat is offered for women diagnosed with ovarian cancer who are either undergoing or have completed treatment. During the five-day retreat, we offer workshops, discussion groups, an off-campus field trip, art and other recreational activities, entertainment, great food and a chance to relax and meet other cancer survivors who share similar experiences. This retreat is underwritten and coordinated, in part, with the Ovarian Cancer Survivors Foundation and is offered in September.

### WOMEN'S CANCER RETREAT (adult women) Nominal Registration Fee

The Women's Cancer Retreat is similar to the ovarian retreat described above. It offers a blend of educational and recreational opportunities, as well as entertainment and the chance to network and talk with other women who have, or have had, cancer. This retreat is four days long and open to all women diagnosed with cancer (of any type) and is offered each year in early October.

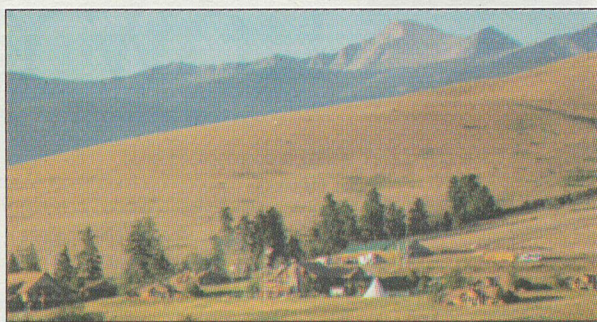
*If you would like additional information or an application for any of the programs listed above, please contact us at (406) 549-5987 or visit our Web site at www.campdream.org and click on the "Dates/Applications" page.*

## Hold Your Next Event at Camp Mak-A-Dream

The new health center building at Camp Mak-A-Dream is available for weekday rentals by outside groups for either day or overnight use. It's an ideal setting for small group retreats, company meetings, board functions and more. Perfect for groups of six to 10 people.

Take advantage of eight private sleeping rooms, a conference room with high-speed Internet access, a wide-screen TV & A/V equipment and a fully equipped kitchen. Meals are also available at an additional cost.

For more information on renting this facility and available dates, please contact Albina Baldwin, hospitality coordinator, at (406) 288-3030 or by e-mail at [camp@montana.com](mailto:camp@montana.com). You can also visit our Web site for pricing information at [www.campdream.org](http://www.campdream.org).



*"Thank you for all your efforts to make our retreat a wonderful success."*

*"We feel honored to have the ability to use Camp Mak-A-Dream for our training kick-off. The dedication and enthusiasm you showed our group was sincerely appreciated and we look forward to coming back again next year."*



## Experience Camp Through the Eyes of Our Campers

Camp Mak-A-Dream is excited to announce the completion of our new DVD. This 15-minute show captures the Camp experience and what it means to our campers to share their stories, their hopes, their fears and their dreams with one another in Montana.

This film was awarded a Gold at the 2006 Montana Addy Awards and also received the judges' Special Commendation of Merit recognition.

**There are many people to thank for making this wonderful piece possible, and we'd like you to know who they are:**

**Director/Producer**  
Matthew J. Clark,  
StraightEight Films, Seattle, WA

**Cinematographers**  
Doug Hostetter, Jordan Parhad

**Location Sound**  
Jessica Hostetter

**Editors**  
Michael Southworth,  
Matthew J. Clark

**Creative Direction**  
Partners Creative, Missoula, MT

**Additional Editing**  
Dan Larson

**Color Correction**  
Jeff Tillotson

**Flame Artist**  
Chris Gard

**Music Composition**  
Jay Farrar

**Post Production Sound**  
Chris White

**DVD Production**  
Daro Walker

**Transcription**  
Barbara Gorrell  
**Production Support**  
StraightEight Films  
**Editorial provided by**  
Editville, Spokane, WA

**Flame provided by**  
Tinderbox

**Color Correction provided by**  
Flying Spot Film Transfer

**Post Production Support & Duplication provided by**  
Dubs, Inc.

**Sound Sweetening & Remix provided by:**  
House of Sound

**Camera Equipment provided by**  
Optimistic Camera

**Grip & Lighting provided by**  
Seattle Grip & Lighting

**Sound Equipment provided by**  
Charlie Tomaras

**Motion Picture Lab**  
Forde Labs

**DVD Programming & Production**  
ILF Media, Spokane, WA

**Jacket Printing**  
Gateway Printing, Missoula, MT

**If you would like to receive a copy of this DVD either for yourself, a potential donor or someone you know with cancer, call us at (406) 549-5987 and we will send one to you!**

**Special thanks to**  
Jay Farrar,  
Bloodshot Records & Bug Music

**Additional thanks to:** Diane Eve, Christine McBride, Karen McDonald, Lars Larson, Jeremy Knapp, Mick Lane, Amanda Kay, Rich Vedvick, Greg Vernon, Mark Simon, Brie Cronkite, Mike Hayertz, Robert O'Malley

## President's Message

Dear Friends,

Mere words cannot express the gratitude we feel for our supporters who continue to help turn dreams into reality with their generous financial contributions! Camp Mak-A-Dream is a magical place for the children, teens, young adults and adults who grace our facility and share their hopes, fears and dreams. It is also an opportunity for having fun, creating friendships and, perhaps for one week, forgetting about the reason they are here. All of our participants have either had or been touched by cancer.

Camp would not happen without the tireless efforts, dedication and tremendous passion of our staff and volunteers — they are truly incredible! In addition, 100 percent of our funds come from people like you — individual donors, philanthropists and foundations. We continue to work hard to cultivate new donor relationships throughout the country, as well as nurture our current donors. We provide a cost-free Montana experience, and it is our goal to ensure that there is a place where dreams can come true well into the future.

On behalf of our board of directors, thank you for your love and support!

With warm regards,

*Colleen Powers*  
President, Board of Directors



# Children's Oncology Camp Foundation

## 2006 Board of Directors

*\* Executive Committee Members*

**Dee Dee Blaney**  
First American Title Co. of Montana

**\*Mark Dvarishkis**  
Northwest Farm Credit Services

**Sherry Granader**  
Self-employed nutritionist

**\*Wayne Hiett**  
Galusha, Higgins & Galusha

**\*Bob Homer**  
Bitterroot Motors

**\*Pattie Ireland-Tornabene**  
Self-employed investor

**Dorothy Irvine**  
Community volunteer

**KK Jense**  
Jense, Inc.

**Mike Juhola**  
REI

**Jan Krystkowiak**  
ROI Direct Marketing

**\*Cory Laird**  
Verizon

**Jordan Lind**  
ALPS

**\*Doug McAlear**  
American Home Mortgage

**Nate McCarthy**  
Galusha, Higgins & Galusha

**Will McCarthy**  
Worden Thane, PC

**\*Colleen Powers**  
Terry Payne & Co.

**Todd Reed**  
Fisher Radio

**Chuck Sulkala**  
National Auto Body Council  
ACME Body & Paint Co.

**Judy Wahlberg**  
ReMax Realty

**Tom Walsh**  
Montana Rail Link

**Anne Wright**  
Three Rivers Oncology

## Michigan Chapter / Friends of Camp Mak-A-Dream honorary members:

**Sue Arnold**, Waterford, Michigan  
**Heather Hall**, Royal Oak, Michigan

## Foundation Staff

**Stu Kaplan, MD**  
Executive Director

**Jennifer Benton**  
Director of Marketing & Special Events

**David Ports**  
Director of Development

**Shirley Hummer**  
Recruitment Coordinator

**Albina Baldwin**  
Hospitality Coordinator

**Bonnie Karrer**  
Bookkeeper

**Tamara Martin**  
Administrative Assistant

**Jake Wood**  
Facility Manager



# HOW YOU CAN HELP

## Sponsor a Camper with a Campership

Sponsor a child or young adult for a cost-free week of Camp with a \$500 "Campership" donation. See donation form on the back cover of this newsletter.

## Make a Memorial or Honorarium Donation

Make a donation in memory of a friend or loved one, or in honor of a holiday or special occasion. Camp Mak-A-Dream will send a keepsake card to the family or honoree. See donation form on back cover of this newsletter.

## Make a Pledge or Planned Gift

Pledge an amount to be paid over a period of time (monthly, quarterly, annually). You can also leave Camp Mak-A-Dream as a beneficiary of your life insurance or in your will. Camp Mak-A-Dream is a proud participant in Legacy Montana ([www.legacymontana.org](http://www.legacymontana.org)). For more information, see our Planned Giving article.



## Give an Item from Our Wish List

There are lots of everyday items and goods we need each Camp season. You can help by donating an item from our Wish List on the back page.

## Display Our Literature

Help us get the word out to possible campers, volunteers and donors by displaying a Camp Mak-A-Dream poster or brochures at your place of business or professional office.

## Have Us Speak at Your Civic Organization or Business Meeting

We love to share what's happening at Camp Mak-A-Dream with members of different communities. If you're a member of a civic organization or would like to hear about Camp at your next business meeting, please contact Jennifer Benton at (406) 549-5987 to arrange a speaking engagement.

## Volunteer

Spend the most incredible week imaginable by volunteering at Camp. You must be at least 18 years of age to apply and go through an extensive interview process. Applications are available by calling our office at (406) 549-5987 or visiting our Web site at [www.campdream.org](http://www.campdream.org). We'd also love to talk with you if you're interested in volunteering in our foundation office in Missoula.

## Rent Our Facility

You can rent the beautiful Camp Mak-A-Dream facility, September through mid-June, for your next gathering or meeting. For more information, visit our Web site at [www.campdream.org](http://www.campdream.org) or contact Albina Baldwin at (406) 288-3030 or [camp@montana.com](mailto:camp@montana.com).

## Donate Frequent Flyer Miles

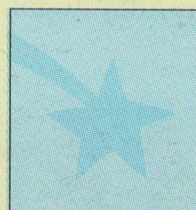
Help us fly a child or young adult with cancer to Camp, bring in professional program speakers to conduct workshops, or allow our staff to travel spreading the word about Camp Mak-A-Dream by donating frequent flyer miles. Your gift can help make attending Camp possible for someone who might not otherwise be able to get here. More information available on page 2.

# In Memory

Each year we are reminded that smiles and friendships formed at Camp may not last forever. Please join us in honoring the children and young adults who have lost their lives over the last year. We extend our deepest sympathies to their families and friends. We are honored to have known them through their experiences at Camp Mak-A-Dream.



**Kelly Anne Batchelor**  
Midlothian, TX  
26 years old  
February 9, 2005



**Patrick Good**  
Seattle, WA  
10 years old  
January 30, 2006



**Ali Mills**  
Memphis, TN  
13 years old  
April 12, 2005



**Devon Doherty**  
Clarkston, WA  
13 years old  
July 2005



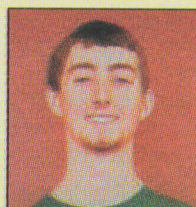
**Stephanie Harlow**  
St Cloud, MN  
20 years old  
September 19, 2005



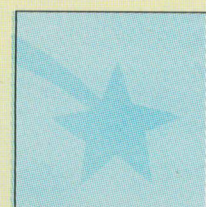
**Kavita Parekh**  
Billings, MT  
22 years old  
April 7, 2005



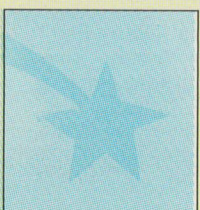
**Christine Donahue**  
Iowa City, IA  
21 years old  
September 1, 2005



**Jacob Littrell**  
LeClaire, IA  
19 years old  
March 5, 2005



**Natale Stabile**  
Plymouth, PA  
25 years old  
February 16, 2006



**Ashley Friend**  
Corvallis, MT  
18 years old  
September 11, 2005



**Kyle McCall**  
Ashland, MA  
21 years old  
August 18, 2005



**Margaret Tse**  
Vancouver, BC,  
Canada  
23 years old  
October 9, 2005

## Welcome to Our Newest Staff Members

**Jake Wood** recently moved into the facility manager position after being with Camp Mak-A-Dream as groundskeeper and maintenance assistance since 2002. Jake resides in Gold Creek, Montana, and enjoys fishing and hunting in his free time.

**Albina Baldwin** joined the our staff in January as hospitality coordinator. Her responsibilities include not only cooking for all of our guests, but also handling the off-season rental of the facility. She is a graduate of the University of Montana College of Technology, born and raised in Missoula, and says she feels fortunate to be part of Camp Mak-A-Dream.

**Tamara Martin** joined Camp Mak-A-Dream as administrative assistant in February of this year after working briefly in the medical department of the Missoula County Detention Center. Before that, she spent a decade working in the education field in Missoula, the last four years as office manager of the University of Montana School of Journalism. Tamara has spent most of her life in Missoula and is married with two daughters and a step-son. She's excited to be part of an organization that works so hard to bring solidarity, joy and hope to this special community of kids and their families.

## THE SURVIVOR PERSPECTIVE

It is early May in the foothills outside Missoula, Montana, and the air is dry and acrid. I settle into a room full of bunk beds with 10 other women, and amid the sounds of roller bags unzipping, I can feel everyone stealing looks at one another. For a moment, I panic and wonder what on earth I have to say to this diverse gathering, strangers with whom I will spend this four-day retreat. There are, however, a couple of undeniable commonalities between us: we are all between 18 and 40, and we have all survived cancer. This is the first time I have been in a room with other survivors since my own battle with Hodgkin's lymphoma when I was 17, and I'm completely unsure what to expect.

On television or in the movies, when young people have cancer, they are tragic heroes: brave, uncomplicated and usually doomed.

In real life, cancer survivors mostly seem like larger-than-life superheroes, star athletes who found nonprofit organizations. On the plane from Chicago, I found myself wondering — would I be surrounded by sad-eyed victims and marathon runners? When someone across the room finally breaks the silence, however, I am amazed at how quickly I feel comfortable. Within minutes we are quizzing each other about chemo drugs, pulling down the necks of our t-shirts to compare surgery scars, and laughing at each other's puking stories. I'm suddenly admitting things I have never said out loud, and I have a feeling I am not alone in this.

At "cancer camp," none of the things with which you identify most in your daily life matter as much. At home, I am a punk rocker, a pro-choice activist, an artist, and an aspiring law student; but at camp, I am a survivor. Although the woman on the bunk bed next to me prefers her Ann Coulter book to my Studs Turkel, we were both diagnosed with cancer at the end of high school and both found ourselves feeling overwhelmed starting college a year out of

treatment. We've both spent most of the past decade trying to make sense of our experience. And now, finding out how similar our paths have been, we're both so grateful for our common ground that we're not concerned about our differences.



There is significant diversity in the backgrounds and career paths of my co-campers, but remarkably, most of us are involved in public service. Many of the other campers volunteer with children, and one woman is even in medical school for pediatric oncology. Like other survivors, I identify with uphill fights, and this identification has found an outlet in activism. Some of my activism has focused on cancer. I'm on the advisory board of a project focused on educating pediatric survivors about their long-term health risks (funded by the Centers for Disease Control and the Lance Armstrong Foundation). I have also

tried to be an advocate for marginalized people, working as a union organizer and volunteering in a maximum-security juvenile prison. After working in public health at a Planned Parenthood clinic for the past year, I am interested in law and policy as they relate to healthcare disparities for rural, poor and minority patients. This interest has deepened since meeting survivors from a variety of socioeconomic and ethnic backgrounds, and since reconnecting with my own health history.

On my last day of treatment, after eight months of chemo and a month of radiation, I thought I could just move on, get back to being 17. I had gone to my junior prom bald and was looking forward to sporting a full head of hair at senior prom. During those four chilly days in Montana, I was reminded that cancer is not a finite experience. I am now, and will always be, a cancer survivor. I see the world, and my own path, through a survivor's eyes.

-Lela, Young Adult Survivor Conference participant

## A Message from Our Founders

Dear Friends,

We are delighted that another summer at Camp Mak-A-Dream will soon be upon us.

Through your support and dedication, you have once again made this dream possible for many children and young adults with cancer throughout the country.

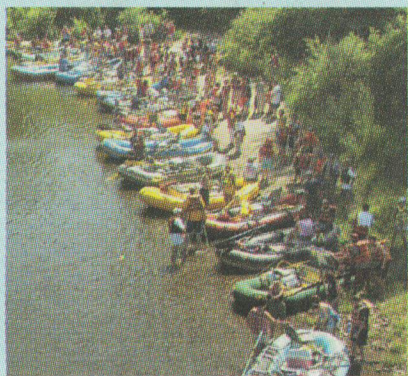
Each year at Camp Mak-A-Dream, our campers take new friendships, self-assurance and wonderful memories home with them. This coming summer will be no different in bringing joy to so many.

**Thank you for your love and support.**

- Harry and Sylvia Granader



**Executive Director's Report**  
*Stu Kaplan, MD*



It has been a remarkable year at Camp Mak-A-Dream. In 2005, we hosted almost 300 children and young adults affected by cancer from 30 states and three countries. It is such a pleasure to bring these people from different backgrounds into a space where they are free to share their common experiences. We are able to help their transition from feeling alone as a cancer patient in their own community, to feeling a part of a nationwide community of cancer survivors.

There are many people to thank for our ability to carry out our mission, including the amazingly dedicated year-round staff, our committed board of directors, our energetic seasonal camp staff and the countless members of the weekly volunteer staff. Volunteers come to Camp from all walks of life — students to homemakers, actors to physicians, all of whom help make the magic happen each summer in Gold Creek, Montana. And, of course, there are the generous businesses, groups and individuals like you who believe in our mission and know how important it is to bring a week of "normalcy" into the life of a young person affected by cancer. If you have supported us, we thank you for giving us the means to provide the experience we do. If you have not, we hope you will consider becoming a part of our family.

**Have a great year!**

# Adult Cancer Retreats at CAMP MAK-A-DREAM

Each fall at Camp Mak-A-Dream, we offer multiple-day retreats for adults with cancer. If you or someone you know might be interested in attending either of these retreats, please let us know or have them get in touch with us for more information and a registration form. Retreats include all accommodations, meals and retreat activities, plus transportation from the Missoula airport to the Camp facility in Gold Creek, 65 miles east of Missoula. For an application, go to our Web site ([www.campdream.org](http://www.campdream.org)) and click on "Adult Retreats."

**September 7-11, 2006**

**10<sup>TH</sup> ANNUAL OVARIAN  
CANCER RETREAT**

For women diagnosed with ovarian cancer. **Cost: \$150**

**October 5-8, 2006**

**II<sup>TH</sup> ANNUAL WOMEN'S CANCER RETREAT**

For women diagnosed with any form of cancer. **Cost: \$185**

**FOR MORE INFORMATION**

Contact Jennifer Benton at:

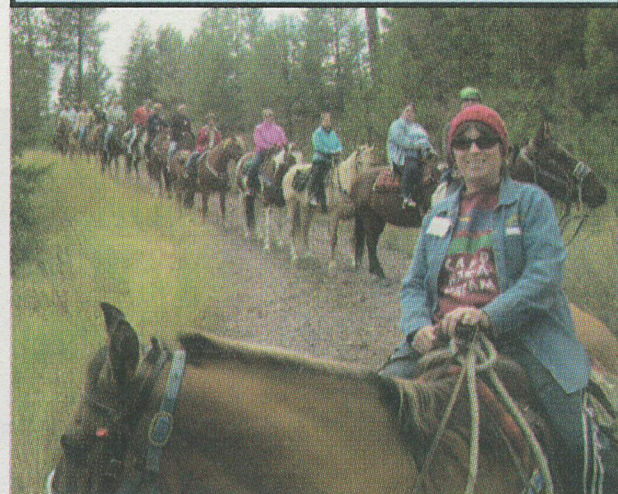
**Phone:** (406) 549-5987

**Fax:** (406) 549-5933

**E-mail:** [jennifer@campdream.org](mailto:jennifer@campdream.org)

**RETREAT ACTIVITIES  
WILL INCLUDE:**

- ★ Workshops ★ Resource information
- ★ Fabulous food ★ Guest speakers
- ★ Recreational activities
- ★ Beautiful cabins
- ★ Networking opportunities
- ★ Art studio sessions ★ Fireside chats
- ★ Small group discussions
- ★ Entertainment



## SPECIAL EVENTS-2006

**Casino Night Featuring Texas Hold 'Em  
Sunday, April 9**

Missoula Harley-Davidson ~ Missoula, MT

- ★ \$100 buy-in
- ★ Prizes for top 10 players
- ★ Partnership event with Missoula's Sunrise Rotary Club

**5th Annual RATPOD  
Saturday, June 24**

Ride Around the  
Pioneers in One Day  
Big Hole Valley, MT



(See sidebar on opposite page.)

**Cut for a Cause**

We are teaming up with volunteers who want to cut their hair for a cause! If you're interested and want more information, please contact Jennifer Benton at Camp Mak-A-Dream at (406) 549-5987 or [jennifer@campdream.org](mailto:jennifer@campdream.org).



Laura Walker

Laura Walker, a Montana native and Camp volunteer, is pledging to make a difference in a camper's life . . . and hopes you will, too. You can donate your hair to be made into wigs for cancer patients. For more information, check out [www.locksoflove.org](http://www.locksoflove.org).



# PLANNED GIVING: LEAVING A LIFETIME OF HEALING

Imagine a magical place in Montana where joy and friendship are the catalyst for healing — a place of stunning beauty that encourages children, teens and young adults with cancer to lean on one another, to share thoughts and fears, and to feel normal again. That place is real and right here in Montana — Camp Mak-A-Dream.

Now imagine being able to ensure that for many years to come, this amazing resource is here for young people with cancer. You can make this happen through a planned gift to Camp Mak-A-Dream.

## WHAT IS A PLANNED GIFT?

A planned gift is a lasting gift from your estate to Camp Mak-A-Dream. Naming Camp Mak-A-Dream in your will or as a beneficiary of an insurance policy, financial account or retirement plan will allow you to enjoy your assets during your lifetime while also realizing your charitable goals.

## WHEN YOU MAKE YOUR GIFT.

Camp Mak-A-Dream strongly encourages you to contact a qualified financial advisor before making a gift. In addition, you should provide your financial advisor with the following legal designation and tax ID information:

*The Children's Oncology Camp Foundation, Incorporated, is a non-profit organization based in Missoula, Montana, with a principal business address of P.O. Box 1450, Missoula MT, 59806-1450.*

*Our Tax ID number is: 81-0472959. The Children's Oncology Camp Foundation is a 501(c) (3) tax exempt organization and is tax exempt under the regulations of the Internal Revenue Service.*

## Ways of Giving

### 1. Outright Gift

A gift of cash, appreciated securities, personal property, appreciated real estate, or life insurance is a great way to help Camp Mak-A-Dream right now. These gifts can be made throughout the year at any time.

### 2. Revocable Gifts

Planned gifts made through your will, revocable trust, retirement plan, insurance policy, bank, brokerage and other accounts are an easy way to make a future gift while keeping your assets available during your lifetime. Revocable gifts are flexible (you can change your mind), provide a possible estate tax deduction, and help Camp Mak-A-Dream plan for the future.

### 3. Irrevocable Gifts

Some irrevocable gifts and other complex planned gifts may also be possible. We encourage you to contact us at (406) 549-5987 if you would like to consider something other than a simple bequest.



## Patsy O'Neill Golf Classic Friday, July 14

Butte Country Club ~ Butte, MT

- ★ 18-hole scramble at Butte Country Club
- ★ Silent and live auction, plus dinner following golf
- ★ Event hosted and organized by the O'Neill, Petritz and Schulte families in memory of their mother, Patsy O'Neill
- ★ Call for more information or to register

## Cookies & Dreams Late summer

Billings, MT

- ★ Cookie bake-off event with attendees sampling and voting for their favorites
- ★ Families and Billings community welcome
- ★ Date and location to be determined and posted on Camp's Web site



## Restore the Dream Golf Tournament Wednesday, August 30

Missoula Country Club ~ Missoula, MT



- ★ Best ball golf tournament, teams of four players
- ★ Registration fee includes golf, lunch, official shirt and chance at great prizes
- ★ Live and silent auctions, plus raffle drawing and hors d'oeuvres following play
- ★ Corporate and hole sponsorships available (please contact us for more information)
- ★ Partnership event between Camp and Dayspring Restoration of Missoula

*Thanks to the Mary Wolf Roling Bogue Foundation for underwriting this event.*

**For additional information on any of these events, or for information on what you can do to support Camp Mak-A-Dream in your own community, please contact Jennifer Benton at (406) 549-5987 or e-mail [jennifer@campdream.org](mailto:jennifer@campdream.org).**

## 5th Annual



**RIDE AROUND THE  
PIONEERS IN ONE DAY**

**Big Hole Valley, MT  
Saturday, June 24**

**WHAT IS RATPOD:** 157-mile, single-day bicycling event

**WHERE:** Around the Pioneer Mountains in the Big Hole Valley of Montana

**WHY:** For a great cause. Riders are encouraged to raise donations for Camp. Prizes will be given to the riders who raise the most money!

**WHEN:** Friday, June 23:  
Check-in and pre-ride pasta dinner in Dillon, MT  
Saturday, June 24:  
RATPOD ride, followed by live music, BBQ dinner and prizes

**HOW:** Log on to [www.ratpod.org](http://www.ratpod.org) for more information or to register. Or call Jennifer Benton at (406) 549-5987 or e-mail [info@ratpod.org](mailto:info@ratpod.org).

**COST:** Registration fee is \$80 (\$100 after May 15). Includes the ride, food and support on the route, shirt and meals Friday and Saturday nights

## Sponsors of this year's event include:

### Platinum Sponsors:

Home Health of Montana  
Montana Cancer Specialists

### Gold Sponsors:

Missoula Anesthesiology  
Missoula Bone & Joint  
Great Harvest Bread Co.

### Silver Sponsors:

Benefis Healthcare  
First National Bank  
Five Valleys Urology  
Merrill Lynch  
Rocky Mountain Ear, Nose & Throat  
Western Montana Clinic  
Western Montana Medical Association

### Bronze Sponsors:

Locati Architects  
MacArthur, Means & Wells  
Missoula Nissan  
Schlauch-Bottcher Construction

### Major In-Kind Support from:

ClearChannel Radio  
Montana Spring Water  
Office Solutions  
Patagonia Outlet  
Partners Creative  
Sapphire Physical Therapy  
Subway



Children's Oncology Camp Foundation  
P.O. Box 1450  
Missoula, MT 59806-1450

2006

NON-PROFIT  
U.S. Postage  
**PAID**  
Permit #368  
Missoula, MT

**CAMP MAK-A-DREAM WISH LIST 2006**

**Art Studio**

- Tempura & acrylic paints
- Necklace clasps & earring hooks
- Scissors — basic straight style
- Assorted color Sharpie pens
- Sewing machine (*in working order*)
- White cotton fabric & fleece (*1+ yd. pieces*)
- Large rolls of butcher paper (*white & colors*)
- Shaped paper punches
- New white t-shirts for tie-dye

**Camp Activities & Programs**

- CDs of popular music
- Costumes for dress-up
- Disposable cameras
- Flashlights & headlamps with batteries
- Blank journal books
- New sleeping bags & ground pads
- Folding camp chairs
- Pool cues
- Karaoke CDs
- Giveaway prize items (*new stuffed animals, art sets, picture frames, magic trick items, music boxes, etc.*)
- Large throw/floor pillows
- Fleece lap throws

**Decorations**

- Balloons
- Crepe paper in assorted colors
- New candles (*taper, votive, pillar*)
- Handled gift bags (*all sizes*)
- 8" paper plates & cocktail napkins
- Theme decorations for 10 dining tables

**Gift Certificates to Missoula Retailers**

- Barnes & Noble
- Best Buy
- Home Depot
- Lowe's
- Michael's Crafts
- Staples
- Target
- Wal-Mart

**Larger Items**

- Larger-screen color TV & VCR
- Color laser printer

**Nature Education**

- Binoculars
- Animal & plant identification books

**Office Supplies & Equipment**

- AA batteries
- Card stock paper in assorted colors
- Nice, decorative 8.5" x 11" paper
- Motion nightlights with bulbs
- Recordable blank CDs & plastic cases
- Small alarm clocks
- Sharpie markers in assorted colors
- Mailing labels (*Avery #5160, 30/page*)
- Catalog size (*9" x 13"*) envelopes
- Easel flip-chart pads for presentation
- Free-standing easels (*floor height & table top*)
- Laminator (*heat-free*)
- Twin-size blankets & standard bed pillows (*must be new*)
- 4,000-lb., fixed-height steel Gantry Crane with hoist trolley
- Air hammer kit
- 3/8" air ratchet
- 1/2" Impact wrench and Impact sockets
- Wood-floor buffing machine
- Handheld leaf blower
- Oxygen-acetylene torch



**CAMP  
MAK-A-  
DREAM**

**Mail to:**  
Camp Mak-A-Dream  
P.O. Box 1450  
Missoula, MT 59806  
Children's Oncology  
Camp Foundation  
is a 501(c)(3)  
non-profit corporation.  
Contributions are  
tax deductible.  
**Tax ID # 81-0472959**  
**Spring 2006 / Issue 18**

**Camperships, Donations and Memorials**

Help make a dream come true for a child or young adult with cancer. All gifts will be acknowledged with a keepsake card.

Your Name: \_\_\_\_\_  
Address: \_\_\_\_\_ Phone #: \_\_\_\_\_  
City/State/Zip: \_\_\_\_\_

**Camperships:** I would like to donate \_\_\_\_\_ Campership(s) @ \$500 each (sponsors one camper for one week).  
Please include \_\_\_\_\_ engraved brick(s) at \$25 each. (One brick per campership donation, please.)

Name(s) to appear on brick(s): (Maximum of 30 characters) \_\_\_\_\_

**General Donations:** I would like to make a donation in the amount of \_\_\_\_\_

**Memorials:** This gift is made in \_\_\_\_\_ honor \_\_\_\_\_ memory of \_\_\_\_\_  
Given by \_\_\_\_\_

**Send keepsake memorial card to:**

Name(s): \_\_\_\_\_  
Address: \_\_\_\_\_ Phone #: \_\_\_\_\_  
City/State/Zip: \_\_\_\_\_

**TOTAL AMOUNT ENCLOSED \$** \_\_\_\_\_ Paid by: Cash \_\_\_\_\_ Check \_\_\_\_\_

MasterCard \_\_\_\_\_ Visa \_\_\_\_\_ American Express \_\_\_\_\_ Discover \_\_\_\_\_

Account # \_\_\_\_\_ Expires: \_\_\_\_\_

Signature: \_\_\_\_\_