

THE MISSION of the Children's Oncology Camp Foundation is to provide Camp Mak-A-Dream as a medically supervised, cost-free experience for children and young adults with cancer.

Camp Mak-A-Dream is a really beautiful, dreamy place. You can really set your emotions and dreams here and leave them forever.

-Sammy Smith, 13 years old

THE DREAMCATCHER

CAMP MAK-A-DREAM ★ GOLD CREEK, MONTANA

2005 Schedule

January 3-9

Young Adult Conference
young adults with cancer
(ages 19 to 25)

May 19-23

Young Adult Survivors Conference
young adult cancer survivors
(ages 20s and 30s)

June 29-July 6

Teen Camp
teens with cancer
(ages 14 to 18)

July 10-17

Young Adult Conference
young adults with cancer
(ages 19 to 25)

July 21-26

Siblings Camp
children who have a brother
or sister with cancer
(ages 6 to 17)

July 30-August 6

Young Adult Conference
young adults with cancer
(ages 19 to 25)

August 10-16

Young Adult Conference
young adults with cancer
(ages 19 to 25)

September 8-12

9th annual Ovarian Cancer
Survivors Retreat
women diagnosed with ovarian cancer

October 6-9

10th annual Women's Cancer Retreat
women diagnosed with cancer



**CAMP
MAK-A-
DREAM**

Spring 2005 Issue 17



Matthew Clark

MONTANA'S OTHER GEM CAMP MAK-A-DREAM

Those of us who live here are spoiled. The majestic mountains and the endless blue sky provide a sense of calm and wonder that can truly foster courage and strength. It's with a special sense of pride that we share our state with people from all across the country.

For many of the cancer patients who come to Camp Mak-A-Dream, a change of scenery has been limited to visits to a doctor's office . . . or a trip from their hospital room to radiology. These young people rarely get the chance to get out and enjoy nature. Where better to get this chance than in beautiful Montana?

Camp Mak-A-Dream enjoys a hilltop setting amongst the mountains of western Montana. The 87-acre campus provides sweeping views of the surrounding Flint Mountain range and the Clark Fork River, as well as the charming historic township of Gold Creek. It is both peaceful and inspirational — a good mix for someone battling cancer. And in the midst of this setting, just steps away from the pool, nature center,

ropes course and art barn, is a new state-of-the-art health center that ensures that our participants are well cared for and safe.

Many who attend Camp Mak-A-Dream are from urban areas on the East Coast or from the rural south and have never seen fresh white snow or gorgeous mountain peaks. For them, a week in Montana can help them find the power they need to endure treatments and maintain hope for the future. Montanans can take pride in sharing our state with others, knowing that hundreds of memories will go home with each of these young people. It's incredible to witness what a difference Montana and Camp Mak-A-Dream can make in their lives.

Contact us at: Children's Oncology Camp Foundation ★ Camp Mak-A-Dream ★ P.O. Box 1450 ★ Missoula, MT 59806 ★ (406) 549-5987 ★ www.campdream.org

Who do you know with cancer?

Camp Mak-A-Dream would like to serve as many individuals living with cancer as we can . . . but we need your help.

Our programs:

Professional medical staff and an on-site health care center allow us to accommodate cancer patients who are currently undergoing treatment.

We offer programs for participants of all ages, from all geographic areas:

- ★ Children with cancer (ages 6-13)
- ★ Teens with cancer (ages 14-18)
- ★ Young adults with cancer (ages 19-25)
- ★ Siblings of cancer patients (ages 6-17)
- ★ Women with cancer (adults over 18)
- ★ Women with ovarian cancer (adults over 18)
- ★ Young adult cancer survivors (ages 20s and 30s)

Won't you help us serve your family, friends or members of your community?

Please pass this newsletter along to someone you know with cancer.

For more information:

Children's Oncology Camp Foundation
Camp Mak-A-Dream
P.O. Box 1450 / Missoula, MT 59806
Phone: (406) 549-5987
Fax: (406) 549-5933
E-mail: camp@montana.com
Web: www.campdream.org

Frequent Flyer Miles?

Camp Mak-A-Dream would love to talk to you about donating your unused frequent flyer miles to assist campers who are unable to afford transportation to Camp. These miles can also help make it possible for Camp Mak-A-Dream to bring in national speakers to conduct workshops for our participants.

If you have 25,000 or more miles that you'd like to donate, please contact Shirley Hummer in our office at (406) 549-5987 or e-mail: shirley@campdream.org.

We can accept blocks of 25,000 or more miles from all airlines.



CANCER AND THE CAMP MAK-A-DREAM EXPERIENCE

Approximately 10,000 children and young adults are diagnosed with cancer each year in the United States. The good news is that an overwhelming majority of these individuals survive their illness. It is believed that in the year 2010, one in every 350 young adults will be a survivor of childhood cancer.

Life is interrupted while someone is being treated for cancer. There are frequent doctor visits and hospitalizations. The very medicines and radiation treatments that save lives also subject young people battling cancer to nausea, fevers and blood transfusions. Kids miss countless days of school and are often isolated from friends. Developmental milestones are lost. In short, there is much that makes a young cancer patient feel "different."

Camp Mak-A-Dream strives to provide a week of normalcy to this very special population. Children leave their baggage at the bridge of dreams, both literally and figuratively. No one is judged for "what they have" or "what they look like," as they may be in their everyday lives. And at Camp, they can take part in normal childhood activities such as swimming, fishing and

hiking, surrounded by people who know just what they are going through.

And they are safe. Although someone battling cancer is always at risk of getting very sick, Camp Mak-A-Dream provides a state-of-the-art health center staffed with physicians and oncology nurses. The health center allows us to provide blood transfusions, IV antibiotics and chemotherapy administration — all under the watchful eye of medical personnel.

Camp Mak-A-Dream provides a safe, fun-filled, enriching place where the main job of our participants is to have fun and to experience a week of feeling just like everyone else around them. In addition, many leave Camp having learned things that prove valuable in the transition from young cancer patient to healthy adult.

"I want to thank you for the incredible experience you allowed me to have last summer. I am still amazed by the kindness, generosity and dedication of everyone there - and by the unique and special program you have developed. Thank you so very much for all you do and for allowing me to experience the love you provide for the campers. I hope to return to camp again some day." Sarah, Teen Camp participant

HOW YOU CAN HELP

Other ways you can give:

Camperships

Sponsor a child or young adult for a week of camp with a \$500 donation. You can also have your name permanently engraved on a brick in the walkway at Camp for an additional \$25.

Memorial or Honorarium Donations

Make a donation in memory of a friend or loved one, or in honor of a holiday or special occasion. Camp Mak-A-Dream will send a keepsake card to the family or honoree.

Make a Pledge

Pledge an amount to be paid over a period of time (monthly, quarterly, annually).

Give an Item from the Camp Wish List

There are lots of everyday household items and goods that we need each Camp season. Please see the Wish List on page 7.

Give Over Time with Planned Giving

You can name Camp Mak-A-Dream in your will or as a beneficiary of your life insurance policy. Planned giving is an easy way to make a big difference.

Help Build Our Endowment

Help Camp Mak-A-Dream build an endowment fund large enough to pay for operations and programs in the future by utilizing the Montana Endowment Tax Credit.

Display Our Literature

Camp Mak-A-Dream would appreciate the opportunity to display our brochures at your place of business or professional office. We need to get the word out about our cost-free programs for cancer patients to as many individuals as possible and would love to have you assist us in that effort.

Have Us Speak at Your Civic Organization or Business Meeting

We love to share what's happening at Camp Mak-A-Dream with members of different communities that help support us. If you are a member of a civic group or would like to hear about Camp at your next business meeting, please contact Jennifer Benton at (406) 549-5987 to arrange a speaking engagement date.

Shop at Albertson's Grocery Stores

Giving is as easy as shopping at Albertson's grocery stores across Montana with a "Community Partners" card. The card is free, and with each purchase you make a portion of that purchase amount is donated to Camp Mak-A-Dream on a quarterly basis. Call the Camp office to obtain your free "Community Partners" card.

Transfer Matured Stocks

You can also make a donation by transferring matured stocks to Camp Mak-A-Dream.

Rent Our Facility

You can rent the beautiful Camp Mak-A-Dream facility, September through mid-June, for your next gathering or meeting. Please see page 5 for further information.

Volunteer at Camp

Spend the most incredible week imaginable by volunteering at Camp Mak-A-Dream. Applicants must be at least 18 years of age and go through an extensive application and interview process. Applications are available by calling our office (406) 549-5987 or visiting our Web site, www.campdream.org.

Donate Frequent Flyer Miles

You can help a child or young adult with cancer get to Camp by donating your unused frequent flyer miles. Please see the article on the previous page for more information.

Camp Mak-A-Dream is a proud participant in Legacy Montana. For more information and a list of additional participating charities, please visit www.legacymontana.org.



In Memory

Each year we are reminded that smiles and friendships that are formed at Camp may not last forever. Please join us in honoring the children and young adults who have lost their lives over the last year. We extend our deepest sympathies to their families and friends. We are honored to have known them through their experiences at Camp Mak-A-Dream.



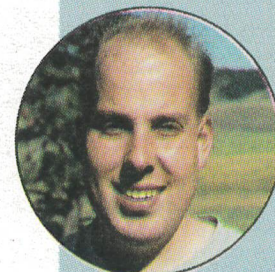
Tyson Graham
Tappan, British Columbia, Canada
23 years old
March 17, 2004



Clelia "Clay" Sanchez
Hudson, Michigan
18 years old
March 5, 2004



Laquasha Gunn
Jackson, Tennessee
20 years old
November 14, 2004



Erik Sherstad
Germantown, Maryland
25 years old
March 2, 2005

Children's Oncology Camp Foundation

Full- & Part-Time Staff

Stuart J. Kaplan, MD,
Executive Director

Jennifer Benton, Director of
Marketing & Special Events

David Ports, Director of
Development

Shirley Hummer, Residential &
Volunteer Coordinator

Tom Hoffman, Food Service & Rental
Coordinator

Bob Hummer, Facility Manager

Bonnie Karrer, Bookkeeper

Board of Directors: Officers

Wayne Hiatt, President

Colleen Powers, Vice President

Ned Becker, Past President

Mark Dvarishkis, Treasurer

Brian Salonen, Secretary

Pattie Ireland-Tornabene,
Member at large

Bob Homer, Member at large

Local Board

John Engen

Sherry Granader

Wendy Haller

Caryl Klein

Cory Laird

Sally Lentz

Doug McAlear

Nate McCarthy

Will McCarthy

Bill McSpadden

Chuck Sulkala

Eric Syvrud

Judy Walhberg

Honorary Board

Sophie Craighead

Danny Granader

Harry & Sylvia Granader

Susan O'Connor

Phyllis Washington

Michigan Chapter Officers

Sue Arnold, President

Heather Hall, Vice President

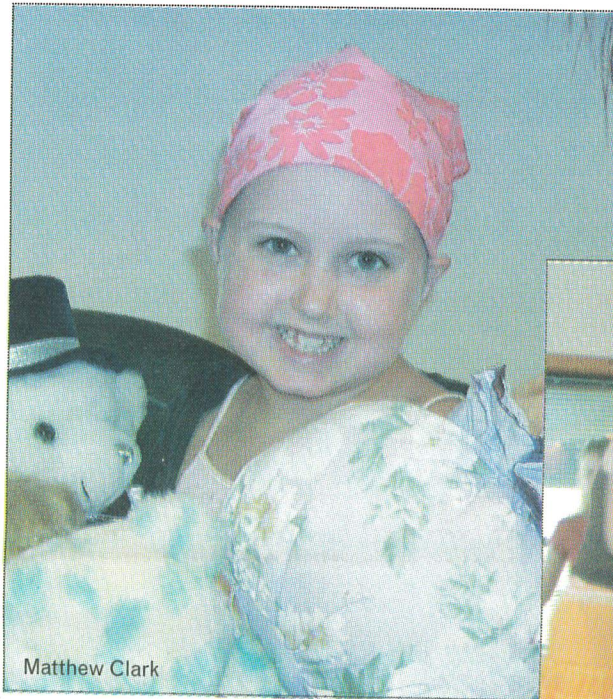
Marco Grossi, Vice President

Hadar Granader, Past President

Amy Singer, Secretary

Bob Mellen, Treasurer

Lauren Altman, Executive Director



Matthew Clark



Matthew Clark

DEAR FRIENDS AND SUPPORTERS OF CAMP MAK-A-DREAM,

Recently, my thoughts have centered on all the great accomplishments that have occurred over the past 10 years at Camp Mak-A-Dream. What can happen in the blink of an eye! Over 3,000 participants have been served, and the new health center was paid for and completed. We said goodbye to Gregg Doerfler who, with great dedication, guided the camp to where it is today. The upcoming year will continue to see long-range planning and an expansion of our mission.

We recently welcomed Stu Kaplan as the new executive director (after convincing him that Missoula and Memphis aren't much different). Also joining us is David Ports as the director of development; David brings a high level of energy and skills that will help us grow. Fortunately, the rest of our hard-working and talented staff stayed with us, including Jennifer Benton in her new role as director of marketing and special events. I offer a huge thanks to the full-time staff and volunteers who make the experience of Camp possible for the children and young adults living with cancer.

I owe an equally large thanks to the financial supporters of Camp. Your generous donations over the years have helped and touched thousands. I urge you to keep Camp Mak-A-Dream in your thoughts and continue your support.

Sincerely,

Wayne R. Hiatt, CPA

President, Board of Directors

"I cannot think of one thing that I did not enjoy at camp. My favorite thing is the friends that I made. I really don't know anyone my age who has cancer, so it was awesome to get to talk with people who have been through what I've been through. This camp really does make a difference, and I just wanted to thank you for all that you do."

Lauren, YAC participant

EXECUTIVE DIRECTOR'S REPORT

– **Stu Kaplan, Executive Director**

This has been a very exciting year for Camp Mak-A-Dream. We served over 250 kids, teens and young adults with cancer from 31 states, all of whom attended Camp Mak-A-Dream at no cost. We have now served close to 3,000 participants in our 10-year history.

The experience we can provide at Camp Mak-A-Dream defies description. The ability to make a young person with cancer feel normal is a very rewarding one — even more rewarding when you consider that the experience is one from which our participants draw strength and encouragement throughout the year.

We rely on over 100 volunteers each year to provide a safe, fun and enriching experience for our participants. We also rely on thousands of individuals, as well as corporations and foundations, to provide the financial support to ensure that the amazing experience remains cost-free.

On behalf of the staff of Camp Mak-A-Dream, I would personally like to thank you for your interest in our organization. Please contact us if you have any questions about our programs or if you'd like to help. We could not provide this experience without the support of people like you.



REPORT FROM FRIENDS OF CAMP MAK-A-DREAM

– **Sue Arnold, Michigan Chapter President**

On behalf of the Friends of Camp Mak-A-Dream, Michigan Chapter, greetings to all of you in Montana. We are all very pleased, as always, with all the great things that happened in 2004, especially celebrating Camp's 10th anniversary! We here in Michigan had our best year ever for fundraising, but the best highlight of all is that we were able to send 51 campers from Michigan to Camp Mak-A-Dream in 2004. We would also like to congratulate Dr. Stuart Kaplan on his new position as executive director.

We look forward to doing even more for Camp in 2005, as everyone here is truly committed to Camp Mak-A-Dream.

RENT CAMP MAK-A-DREAM'S NEWEST BUILDING

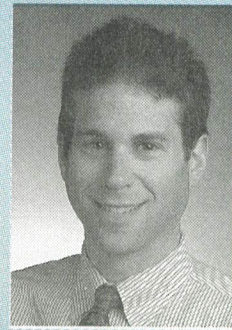
Our new health center building is now available for weekday rentals — ideal for small group retreats, company meetings, board functions and more. Take advantage of eight private sleeping rooms, a conference room with high-speed Internet access, wide-screen TV and A/V equipment and kitchen. Perfect for groups of 6 to 12 people.

For more information on renting this facility and available dates, please contact Tom Hoffman in our office at (406) 549-5987 or by e-mail at tom@campdream.org.



Welcome to Our New Staff

Executive Director
STUART KAPLAN, MD



Stu has been active with Camp Mak-A-Dream for nine years. During that time, he has served as a volunteer, summer camp director, camp doctor and

medical director on the board of directors. Most recently, Stu served as clinic manager for the Survivors' Clinic at St. Jude Children's Research Hospital in Memphis, Tennessee, a world-renowned leader in pediatric cancer research and treatment. Along with his oncology expertise, Stu brings a passion for Camp Mak-A-Dream and the incredible impact it has on the lives of kids, teens and young adults with cancer.

Director of Development
DAVID PORTS



David joined Camp Mak-A-Dream in October of 2004. Prior to this, he served the YMCA for over 10 years in New Hampshire, Wisconsin,

and Washington State. He most recently spent three years as the director of philanthropy for the eastern New York chapter of the Nature Conservancy. David's wife, Kathleen, directs the Missoula office of Herrera Environmental Consultants; together they have an energetic two-year-old son named Sam. David looks forward to working with the staff, donors and volunteer corps that make Camp such an exciting and wonderful place.

Adult Cancer Retreats at CAMP MAK-A-DREAM

Each fall at Camp Mak-A-Dream, we offer multiple-day retreats for adults with cancer. If you or someone you know might be interested in attending either of these retreats, please let us know or have them get in touch with us for more information and a registration form. Retreats include all accommodations, meals and retreat activities, plus transportation from the Missoula, Montana, airport to the Camp facility in Gold Creek, Montana, 65 miles east of Missoula. Applications are also available on our Web site at www.campdream.org.

September 8-12, 2005 9TH ANNUAL OVARIAN CANCER RETREAT

For women diagnosed with ovarian cancer. Cost: \$150.00

October 6-9, 2005 10TH ANNUAL WOMEN'S CANCER RETREAT

For women diagnosed with any form of cancer. Cost: \$185.00

Retreat activities will include:

- ★ Workshops ★ Resource information
- ★ Fabulous food ★ Guest speakers
 - ★ Recreational activities
 - ★ Beautiful cabins
- ★ Networking opportunities
- ★ Art studio sessions ★ Fireside chats
 - ★ Small group discussions
 - ★ Entertainment



FOR MORE INFORMATION

Contact Jennifer Benton at:

Phone: (406) 549-5987

Fax: (406) 549-5933

E-mail: jennifer@campdream.org

PLANNED GIVING — LEAVING A LIFETIME OF HEALING

Imagine a magical place in Montana where joy and friendship are the catalyst for healing — a place of stunning beauty that encourages children, teens and young adults with cancer to lean on one another, to share thoughts and fears, and to feel normal again. Imagine a place that reenergizes the souls and spirits of young people who have been battling cancer and gives them an experience that can change their lives. That place is real and right here in Montana — Camp Mak-A-Dream.

Now imagine being able to ensure that for many years to come, this amazing resource is here for young people with cancer. You can make this happen through a planned gift to Camp Mak-A-Dream.

What Is a Planned Gift? A planned gift is a lasting gift from your estate to Camp Mak-A-Dream. Naming Camp Mak-A-Dream in your will or as a beneficiary of an insurance policy, financial account or retirement plan allows you to enjoy your assets during your lifetime, while also realizing your charitable goals. Many donors find that they can substantially increase their gift by making a bequest and that by doing so, have an impact on Camp and the young people we serve. A revocable

planned gift provides you with flexibility, a possible estate tax deduction and the knowledge that your gift can help change the course of a young person's life.

Dream Builders Circle By making a planned gift to Camp Mak-A-Dream and informing us of your gift, you become a member of the Dream Builders Circle. There are no requirements or expectations once you join — just the bond of like-minded friends of Camp, who share the knowledge that their gifts will continue to benefit Camp Mak-A-Dream for years to come. It's our way of acknowledging a special group of people who have the vision to make a once-in-a-lifetime gift.

WAYS OF GIVING

1. Outright Gift

A gift of cash, appreciated securities, personal property, appreciated real estate, or life insurance is one way to help Camp Mak-A-Dream right now. These gifts can be made throughout the year at any time. Not considered a planned gift, an outright gift provides immediate resources for us to put right to work in meeting our mission of providing Camp Mak-A-Dream as a medically supervised, cost-free experience for children and young adults with cancer.



Matthew Clark

2. Revocable Gifts

Planned gifts made through your will, revocable trust, retirement plan, insurance policy, bank, brokerage and other accounts are an easy way to make a future gift, while keeping your assets available during your lifetime. Revocable gifts are flexible (you can change your mind), provide a possible estate tax deduction, and help Camp Mak-A-Dream plan for the future. Revocable gifts can be funded through cash, securities, real estate, personal property, or by naming us as beneficiary of retirement plans, insurance policies and other financial accounts.

3. Irrevocable Gifts

Some irrevocable gifts and other complex planned gifts may also be possible. We encourage you to contact us at (406) 549-5987 if you would like to consider something other than a simple bequest.

When You Make Your Gift.

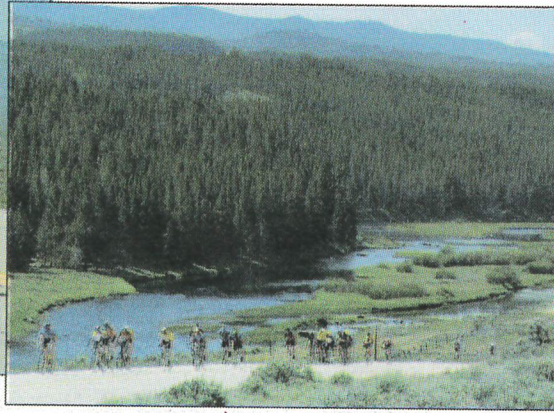
Camp Mak-A-Dream strongly encourages you to contact a qualified financial advisor before making a gift. In addition, you should provide your financial advisor with the following legal designation and tax ID information:

The Children's Oncology Camp Foundation, Incorporated, a non-profit organization based in Missoula, Montana, with a principal business address of P.O. Box 1450, Missoula MT, 59806-1450.

Our Tax ID number is:
81-0472959.

The Children's Oncology Camp Foundation is a 501(c)(3) tax exempt organization and is tax exempt under the regulations of the Internal Revenue Service.

Thank you for considering a planned gift to Camp Mak-A-Dream. Your gift will help to leave a lifetime of healing. For more information please contact David Ports at (406) 549-5987 or david@campdream.org.



2005 WISH LIST

Art Studio

Construction paper (assorted colors)
Glitter glue
Nylon & hemp cord for jewelry making
Packages of new markers
Stickers
Tempura & acrylic paints
Necklace clasps & earring hooks
Colored tissue paper
Scissors
Assorted color Sharpie pens

Camp Activities & Programs

CDs of popular music
Costumes for dress-up
Disposable cameras
Flashlights & headlamps with batteries
Basketball hoop for swimming pool
"Pool Shark" sweep vacuum cleaner
Individually wrapped candy
Blank journal books
Battery-operated walkie-talkie radios

Decorations

Balloons
Crepe paper in assorted colors
New candles: taper / votive / pillar
Handled gift bags — all sizes
Theme decorations for 10 dining tables

Gift Certificates to Missoula retailers

Barnes & Noble
Home Depot
Lowe's
Michael's Crafts
Wal-Mart

Larger items

Larger-screen color TV & VCR/DVD
New digital camera (call for details)
LCD projector
Color laser printer

Medical Supplies

Travel-size hand sanitizer
Six-legged Braun IV pole
New ACE bandage wraps
CPR micro mouth shields
AED machine
New fanny packs

Nature Education

Binoculars

Office Supplies & Equipment

Rechargeable battery for Nikon digital camera—
call for details
AA and D batteries
Cardstock paper in assorted colors
Nice, decorative 8.5"x11" paper
Motion nightlights with bulbs
Recordable blank CDs & plastic cases
Small alarm clocks
Sharpie markers in assorted colors
Mailing labels (Avery #5160, 30/page)
Catalog size (9"x13") envelopes
Easel flip-chart pads for presentations

Kitchen / Housekeeping

Large hot pads
(2) new 4-slot toasters
(4) ironing boards
Large throw pillows (for sitting on floor)

Facility Maintenance / Tools

3/8" drive air ratchet
1/2" Impact wrench & Impact sockets
Air hammer kit
Air-powered hydraulic (front/rear) jack,
3,000 lb. capacity
4,000 lb. fixed height steel Gantry
Crane with hoist trolley
1,000 lb. cap. hydraulic platform lift
20-ton log splitter
Four-wheel-drive ATV with snowplow

State Flags

Large United States flag
We would also like state flags from all 50 states
to fly during Camp sessions.

4th Annual RATPOD Ride Around The Pioneers in One Day Dillon, MT Saturday, June 25th

★ 157-mile bicycle ride around the Pioneer Mountains, starting and ending at UM-Western in Dillon.

★ Entry fee is \$70, and riders are asked to raise pledge donations. Prizes awarded to riders raising the most money.

★ Registration and more information on the RATPOD Web site (www.ratpod.org) or by contacting the Camp office.

Sponsors of this year's event include:

Gold Sponsors:

Missoula Anesthesiology, P.C.

Missoula Bone & Joint

Montana Cancer Specialists

Locati Architects

Home Health Montana

Silver Sponsors:

Community Medical Center

Five Valleys Urology

Great Harvest Bread Co.

MacArthur, Means & Wells

Rocky Mountain Ear, Nose & Throat

St. Patrick Hospital and Health Sciences Center

Western Montana Clinic

Western Montana Medical Association

Bronze Sponsors:

Clear Channel Radio

Garlington, Lohn & Robinson

Montaqua Spring Water

Partners Creative

Subway-Dillon

Schlauch Bottcher Construction



RIDE THE RAT



Children's Oncology Camp Foundation
 P.O. Box 1450
 Missoula, MT 59806-1450

NON-PROFIT
 U.S. Postage
PAID
 Permit #368
 Missoula, MT

U P C O M I N G E V E N T S

Annual Spring Fling

Blue Ribbon Auto, Missoula, MT
May 14th, 2005
 10:00 a.m.-4:00 p.m.

Annual customer appreciation day and car show, including the announcement of the project "Freeride" winner. This year's "Freeride" is a fully customized 1997 Chevy S10 truck that will be raffled off with all proceeds benefiting Camp. Thanks to the following sponsors: Carquest Autoparts, Reflexion, Pacesetter, Inprocarwear, A.R.E., Top Stitch Upholstery and Drive Mobile Entertainment. For more information or to purchase raffle tickets, please contact Blue Ribbon Auto at (406) 543-0387, or on the Web at www.blueribbonauto.com.



4th Annual RATPOD

Ride Around The Pioneers in One Day, Dillon, MT
Saturday, June 25th

157-mile bicycle ride around the Pioneer Mountains, starting and ending at UM-Western in Dillon. See page 7 for more information.

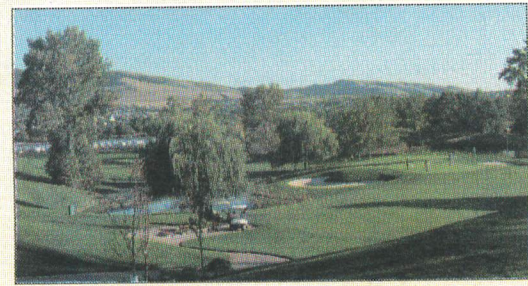
Patsy O'Neill Golf Classic
 Butte Country Club, Butte, MT
Friday, July 8th

- ★ 18-hole scramble at Butte Country Club.
- ★ Silent and live auction, plus dinner following golf.
- ★ Event hosted and organized by the O'Neill, Petritz and Schulte families in memory of their mother, Patsy O'Neill.
- ★ Call the Camp office for more info or to register.



4th Annual Mak-A-Dream Golf Marathon
 Missoula Country Club, Missoula, MT
Friday, September 23rd

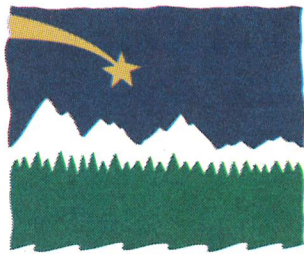
- ★ Full day of golf, food and friendly competition at the Missoula Country Club.
 - ★ Players can play for free by raising \$360 in pledge donations.
 - ★ Corporate and hole sponsorships available.
- Thanks to the Mary Wolf Rolwing Bogue Foundation for underwriting this event.



HuHot Mongolian Grill

Charity Night
 Spring, date to be determined

For additional information on any of these events, please contact Jennifer Benton at (406) 549-5987.



**CAMP
 MAK-A-
 DREAM**

Mail to:
 Camp Mak-A-Dream
 P.O. Box 1450
 Missoula, MT 59806
 Children's Oncology
 Camp Foundation
 is a 501(c)(3)
 non-profit corporation.
 Contributions are
 tax deductible.
Tax ID # 81-0472959
Spring 2005 Issue 17

Camperships, Donations and Memorials

Help make a dream come true for a child or young adult with cancer. All gifts will be acknowledged with a keepsake card.

Your Name: _____

Address: _____ Phone #: _____

City/State/Zip: _____

Camperships: I would like to donate _____ Campership(s) @ \$500 each (sponsors one camper for one week).

Please include _____ engraved brick(s) at \$25 each.

Name(s) to appear on brick(s): (Maximum of 30 characters) _____

General Donations: I would like to make a donation in the amount of _____

Memorials: This gift is made in _____ honor _____ memory of _____

Given by _____

Send memorial card to:

Name(s): _____

Address: _____ Phone #: _____

City/State/Zip: _____

TOTAL AMOUNT ENCLOSED \$ _____ Paid by: Cash _____ Check _____

MasterCard _____ Visa _____ American Express _____ Discover _____

Account # _____ Expires: _____

Signature: _____