

# The Dreamcatcher

CAMP MĀK-A-DREAM • GOLD CREEK, MONTANA • SPRING 2003 • ISSUE # 15

A Publication of the Children's Oncology Camp Foundation

## ★ OUR MISSION ★

The mission of the Children's Oncology Camp Foundation is to provide Camp Mak-A-Dream as a medically supervised cost-free experience for children and young adults with cancer.

## 2003 SCHEDULE

**JANUARY 4-11  
YOUNG ADULT CONFERENCE**  
Young Adults (ages 18-25)  
with Cancer

**JUNE 19-22  
DIABETES YOUTH RETREAT**  
Kids & Teens with Diabetes

**JULY 7-14  
TEEN CAMP**  
Teens (ages 13-17) with Cancer

**JULY 18-24  
KIDS CAMP**  
Kids (ages 6-12) with Cancer

**JULY 29-AUGUST 3  
SIBLINGS CAMP**  
Siblings (ages 6-17) who have a  
Brother or Sister with Cancer

**AUGUST 6-13  
YOUNG ADULT CONFERENCE**  
Young Adults (ages 18-25)  
with Cancer

**AUGUST 15-22  
YOUNG ADULT  
SURVIVORS CONFERENCE**  
Young Adult Cancer Survivors

**SEPTEMBER 4-8  
7TH ANNUAL OVARIAN  
CANCER SURVIVORS RETREAT**  
Women Diagnosed with  
Ovarian Cancer

**SEPTEMBER 26-28  
CAMP LIMBERLIMBS**  
Youth with Arthritis

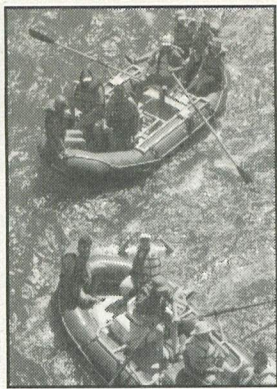
**OCTOBER 9-12  
8TH ANNUAL WOMEN'S  
CANCER RETREAT**  
Women Diagnosed with Cancer

**HELP MAKE  
DREAMS COME TRUE.  
CALL (406) 549-5987  
WWW.CAMPDREAM.ORG**

## In the Words of...

### a Survivor

Words can hardly explain the significance of what each of us takes home from Camp. The time I spent there was the best of my life – the only time when



I felt completely understood. I didn't have to explain what it's like to have inoperable brain cancer at the age of 24... to know that I'll likely die before my parents. I didn't have to hide the rollercoaster of emotions that we all experience... I could just be me.

I had attended a brain tumor support group and swore I would never return... I was the youngest person by 30 or 40 years. They talked about children and grandchildren, retirement, spouses/partners, life insurance policies, and other things I can only dream of living long enough to experience.

It's equally difficult identifying with those our age who don't have cancer. They are out bar-hopping, going to school and getting their first 'real job'... while we're undergoing some of the most brutal treatments that modern medicine has to offer, in an attempt to save our lives.

Camp provides a time and place to discuss thoughts and feelings openly, without worrying about others' judgments. It's amazing to see such tight bonds being formed in one week; we arrive complete strangers and leave the best of friends. A week at Camp passes all too quickly, but the friendships, memories and lessons learned last a lifetime.

Wendy Dixon  
Cancer Survivor and Young Adult  
Conference Participant

### a Volunteer

I spent a week this past summer at Camp Mak-A-Dream in Western Montana. This Camp serves people – mainly young people – who have cancer or who are cancer survivors. I was there for a session designed for young adults, ages 18-25.

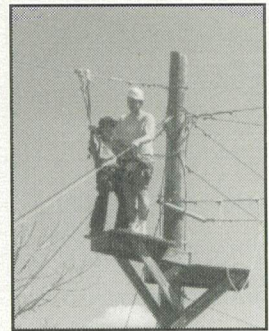
The Camp is an amazing resource for the young people who attend. These are young men and young women struggling to make sense out of life after a cancer diagnosis; struggling to become independent; struggling to live with the long-term side effects of the surgeries and chemotherapy and radiation treatments; struggling with their faith; struggling with their fear of a relapse; struggling to muster the courage to plan an education and a career, and, perhaps, to find the strength to risk loving amidst all of this.

The Young Adult Conference is designed to create a space for the possibilities of community. It's a place for young adults from across the country to spend a week with peers who have similar struggles

and situations. It's a setting in which people are encouraged to do things well outside of their comfort zones — climbing mountains, camping in the wilderness, completing a ropes course, rafting on a big mountain river, creating art that expresses what they feel, risking participation in relationship to others who understand and accept them for who they are, singing, dancing, talking

fearlessly about hopes and fears...and, perhaps most importantly, creating a community that welcomes all and which meets the needs of all who are present. It takes a leap of faith just to show up. And it is a place of remarkable transformation.

Greg Neis  
Young Adult Conference Volunteer



Contact us at: Children's Oncology Camp Foundation / Camp Māk-A-Dream

P.O. Box 1450 • Missoula, MT 59806 • (406)549-5987 • [www.campdream.org](http://www.campdream.org)



**TABLE OF CONTENTS**

In the Words of a Survivor and a Volunteer .....1

Groundbreaking for New Health Center Underway .....2

Who do you know with cancer? .....2

In Memory .....3

Remember Those You Love .....3

Rent Gold Creek Lodge .....3

How You Can Help.....4

Upcoming Events .....4

Rocky Mountain School of Photography .....5

Frequent Flyer Miles .....5

Buy a Campership .....5

Executive Director's Report .....6

Founders' Message .....6

President's Report .....6

Michigan Chapter.....6

Young Adult Survivors Conference .....7

Adult Cancer Retreats .....7

Wish List.....7

What's Been Happening? .....8

**Send Us an E-Mail**  
[camp@montana.com](mailto:camp@montana.com)

**Visit Our Web Site**  
[www.campdream.org](http://www.campdream.org)

*Camp Mak-A-Dream is a non-profit 501 (c) (3) organization and follows all federal guidelines to maintain this status. Please feel free to contact the camp office if you desire more financial information.*

*Newsletter Coordinator:  
 Jennifer Benton*

*Layout, Production & Proofing:  
 Partners Creative:  
 Corey Smith, Kerry Deteey*

*Contributing Writers:  
 Jennifer Benton*

*Printing:  
 Missoulitan - Deb Larson*

© 2013 Children's Oncology Camp Foundation

# GROUNDBREAKING for New Health Center Underway

Camp Mak-A-Dream is excited to announce that we have broken ground on a new Health Center building at the Camp facility in Gold Creek. The majority of funding for this \$1.2 million project came from outside the state of Montana. Grants were awarded by the M.J. Murdock Charitable Trust (Washington), Ronald



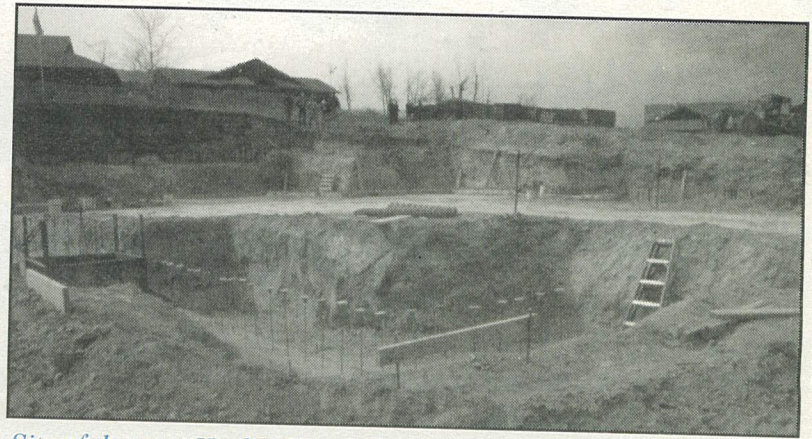
**National Auto Body Council Representatives**  
 (L-R): Mark Claypool, Marco Grossi and Chuck Sulkala

McDonald House Charities (Illinois), the National Auto Body Council and members of the collision repair industry

(nationwide), the Swanson Family Foundation, the Dennis and Phyllis Washington Foundation and the Montana Power Foundation (Montana), and from the Cadeau Foundation in Arizona. We'd like to express our gratitude to all of these organizations that helped contribute to the successful campaign for this much-needed medical facility at Camp.

This new building will help Camp Mak-A-Dream better serve participants who come to Camp in the midst of their cancer treatments. It will allow us to provide treatment for even more individuals who may need blood transfusions, IV antibiotics or even chemotherapy treatments while at Camp.

A ceremonial groundbreaking celebration took place at Camp on March 22, 2003. With the help of our architects, OZ Architecture, and general contractor, Quality Construction, we hope to have the new building up and running for this summer's camp season.



*Site of the new Health Center building at Camp Mak-A-Dream.*

*Photos by Michael Javins*

## Who do YOU KNOW with cancer?

*Camp Māk-A-Dream would like to serve as many individuals living with cancer as we can...but we need your help.*

### **Our Programs:**

We offer programs for participants of all ages from all geographic areas:

- Children with cancer (ages 6-12)
- Teens with cancer (ages 13-17)
- Young adults with cancer (ages 18-25)
- Young adult survivors (ages 20-39)
- Siblings of cancer patients (ages 6-17)
- Women with cancer (ages 18+)
- Women with ovarian cancer (ages 18+)

Professional medical staff and an on-site health care center allow us to accommodate cancer patients who are currently undergoing treatment.

### **Won't you help us serve your family, friends or members of your community?**

Please pass this article or newsletter along to someone you know with cancer.

For more information: Children's Oncology Camp Foundation  
 Camp Mak-A-Dream • P.O. Box 1450 • Missoula, MT 59806 • (406) 549-5987  
 Fax (406) 549-5933 • E-mail: [camp@montana.com](mailto:camp@montana.com) • Web: [www.campdream.org](http://www.campdream.org)



# In memory...

Each year we are reminded that the smiles and friendships that are formed at Camp may not last forever. Please join us in honoring the lives of the children and young adults who have lost their lives over the last year. We extend our deepest sympathies to their families and friends. We are honored to have known them through their experiences at Camp Mak-A-Dream.



**Zachary Davidson**  
Colton, Oregon  
19 years old  
January 11, 2002



**Jason Hewitt**  
Memphis, Tennessee  
21 years old  
October 26, 2002



**Phylicia Johnson**  
Williamsburg, Virginia  
16 years old  
Spring 2002



**Craig Knauss**  
Northampton, Pennsylvania  
19 years old  
November 15, 2002



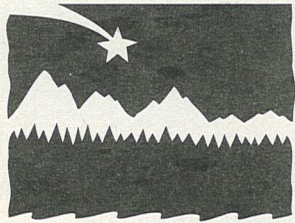
**Bryan Fuller**  
Bridgewater, New Jersey  
18 years old  
October 2, 2002



**Brandon Jackson**  
Memphis, Tennessee  
20 years old  
March 22, 2002



**Jody Rodonets**  
Powell River, BC, Canada  
21 years old  
October 5, 2002



**CAMP  
MAK-A-  
DREAM**

## A WONDERFUL WAY TO REMEMBER THOSE YOU LOVE

Help make a dream come true for a child or young adult with cancer. If you or someone you know would like to make a generous gift in a loved one's name, just fill this out and forward it along with your gift to the Camp Mak-A-Dream office at P.O. Box 1450, Missoula, MT 59806. All gifts will be acknowledged with a personalized keepsake card.

This gift is made in \_\_\_\_\_ honor \_\_\_\_\_ memory of \_\_\_\_\_

Given by \_\_\_\_\_

Send the card to:

Name: \_\_\_\_\_

Address: \_\_\_\_\_

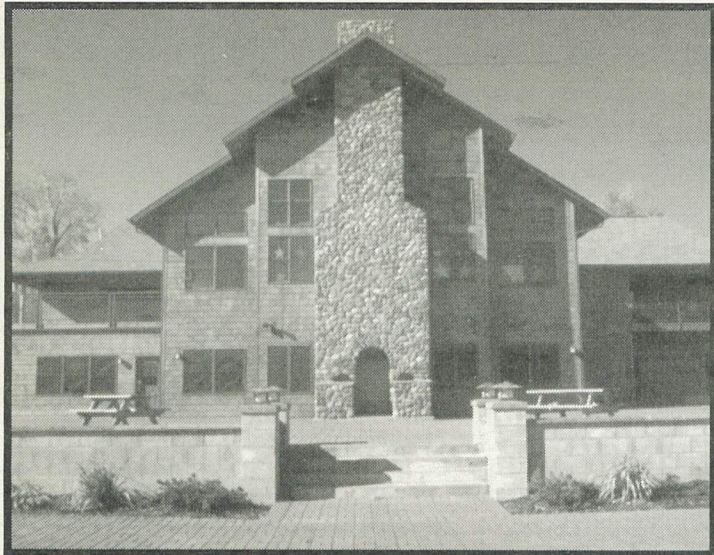
City / State / Zip: \_\_\_\_\_

Credit card contributions may be made by calling (406) 549-5987 or by fax at (406) 549-5933. *Spring 2003, Issue #15*

# RENT

## Gold Creek Lodge

When you choose to hold your business, family or group event at Gold Creek Lodge, home of Camp Mak-A-Dream, you'll be enjoying more than just a fine facility in a mountain landscape. You'll also be helping to support the programs of Camp Mak-A-Dream. The facility is available for rental groups of 10-120 people, for day-long meetings or for several-day retreats from September through mid-June.



### Some of the things Gold Creek Lodge has to offer:

- Fully accessible buildings
- Main lodge with meeting rooms, recreation room and dining hall
- Four cabins with common rooms and fireplaces
- Accessible, heated swimming pool and hot tub
- Outdoor patio area with BBQ grills and picnic tables
- Sleeping capacity of 110 people
- Art Studio building
- Health Care Center
- Meeting and activity rooms
- Ropes course, sand volleyball court, basketball hoop and archery range
- Smoke-free facility and grounds
- Fine dining and variety of menu options
- Competitive rates and excellent service

Let us host your next meeting or gathering at Gold Creek Lodge. Our calendar fills quickly, so call (406) 549-5987 today to reserve your dates or e-mail us at [camp@montana.com](mailto:camp@montana.com). Prices and additional facility photos are available on our Web site at [www.campdream.org](http://www.campdream.org).



# HOW YOU CAN HELP

**Other ways you can give:**

## Camperships

Sponsor a child or young adult for a week of camp with a \$500 donation. You can also have your name permanently engraved on a brick in the walkway at Camp for an additional \$25.

## Memorial or Honorarium Donations

Make a donation in memory of a friend or loved one, or in honor of a holiday or special occasion. Camp Mak-A-Dream will send a keepsake card to the family or honoree.

## Make a Pledge

Pledge an amount to be paid over a period of time (monthly, quarterly, annually).

## Give an Item from the Camp Wish List

There are lots of everyday household items and goods that we need each camp season. Please see the Wish List on page 7.

## Give over Time with Planned Giving

You can name Camp Mak-A-Dream in your will or as a beneficiary of your life insurance policy. Planned giving is an easy way to make a big difference.

## Help Build Our Endowment

Help Camp Mak-A-Dream build an endowment fund large enough to pay for operations and programs in the future by utilizing the Montana Endowment Tax Credit.

## Help a Child with Transportation to Camp

Many campers find it difficult or even impossible to attend Camp simply because they cannot afford to get to Missoula, Montana, from other parts of the country. You can pay for a plane or bus ticket, or donate unused frequent flyer miles. Please see the article on frequent flyer miles in this issue of the *Dreamcatcher*.

## Transfer Matured Stocks

You can also make a donation by transferring matured stocks to Camp Mak-A-Dream.

## Shop at Albertson's Grocery Stores

Giving is as easy as shopping at Albertson's grocery stores across Montana with a "Community Partners" card. The card is free, and with each purchase you make a portion of that purchase amount is donated to Camp Mak-A-Dream on a quarterly basis. Call the Camp office to obtain your free "Community Partners" card.

## Have Us Speak at Your Civic Organization or Business Meeting

We love to share what's happening at Camp Mak-A-Dream with members of different communities that help support us. If you are a member of a civic group or would like to hear about Camp at your next business meeting, please contact Jennifer Benton at (406) 549-5987 to arrange a speaking engagement date.

## Display Our Literature

Camp Mak-A-Dream would appreciate the opportunity to display our brochures at your place of business or professional office. We need to get the word out about our cost-free programs for cancer patients to as many individuals as possible and would love to have you assist us in that effort.

## Rent Our Facility

You can rent the beautiful Camp Mak-A-Dream facility, September through mid-June, for your next gathering or meeting. Please see page 3 for further information.

## Volunteer at Camp

Spend the most incredible week imaginable by volunteering at Camp Mak-A-Dream. Applicants must be at least 18 years of age and go through an extensive application and interview process. Applications are available by calling our office (406) 549-5987 or visiting our Web site, [www.campdream.org](http://www.campdream.org).

## Donate Frequent Flyer Miles

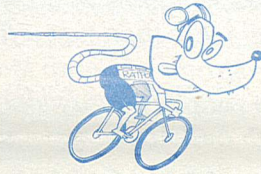
You can help a child or young adult with cancer get to Camp by donating your unused frequent flyer miles. Please see the article on page 5 for more information.

## UPCOMING EVENTS

### SATURDAY, JUNE 28

#### 2ND ANNUAL RATPOD BENEFIT BICYCLE RIDE

What is RATPOD? RATPOD stands for "Ride Around The Pioneers in One Day". It's a 157-mile, one-day benefit bicycle ride starting and ending in Dillon, Montana. Registration is \$70. Forms available by calling (406) 549-5987 or at [www.ratpod.org](http://www.ratpod.org). If you're a bicycling enthusiast, you don't want to miss this ride...it's gorgeous!



Thanks to our Gold Level event sponsors: Missoula Bone & Joint and Missoula Anesthesiology; and Silver Level sponsors: Five Valleys Urology, Montana Cancer Specialists, St. Patrick Hospital & Health Sciences Center and Western Montana Clinic.

### FRIDAY, JULY 11

#### 4TH ANNUAL PATSY O'NEILL CLASSIC GOLF TOURNAMENT

Butte Country Club, Butte, Montana

Golf tournament put on by the family and friends of the late Patsy O'Neill in honor of her memory. Proceeds benefit Camp Mak-A-Dream.



### SATURDAY, AUGUST 2

#### SOUTHGATE MALL'S 25TH ANNIVERSARY CELEBRATION AND CONCERT

Southgate Mall, Missoula, Montana

Tickets available for \$20 each or \$300 for a table sponsorship of ten. Tickets through Camp Mak-A-Dream or the Southgate Mall management office. Concert by Ed Norton's Big Band and the Big Sky Mudflaps.



### FRIDAY, OCTOBER 17

#### 2ND ANNUAL MAK-A-DREAM GOLF MARATHON

Missoula Country Club, Missoula, Montana



Full day of golfing, marathon style with 36 holes. Golfers will collect pledges per hole of play to raise money for Camp. Contact Bruce Danielson or the Camp office at (406) 549-5987 for more information. Many thanks to the Mary Wolf Rofling Bogue Foundation for sponsorship of this event.

## FOR MORE INFORMATION...

Please contact Jennifer Benton at the foundation office by calling (406) 549-5987, e-mailing [camp@montana.com](mailto:camp@montana.com) or [jennifer@campdream.org](mailto:jennifer@campdream.org) or online at [www.campdream.org](http://www.campdream.org) for more information about any of these events, or if you have a fund-raising idea for Camp Mak-A-Dream. As a nonprofit organization, all funding for Camp Mak-A-Dream comes from private donations, gifts, grants and fund-raising events such as those listed above. All donations are tax deductible.



# Rocky Mountain School of Photography

Several of the images throughout this newsletter, on our Web site and in various other marketing materials for Camp Mak-A-Dream were taken by students of the Summer Intensive Program at the Rocky Mountain School of Photography in Missoula, Montana. We appreciate their efforts and allowing us the opportunity to have quality images convey the experiences of participants at Camp Mak-A-Dream!



Photo by Jennifer Barrett



Photo by Molly Chapman

Photo by Anna Risinger

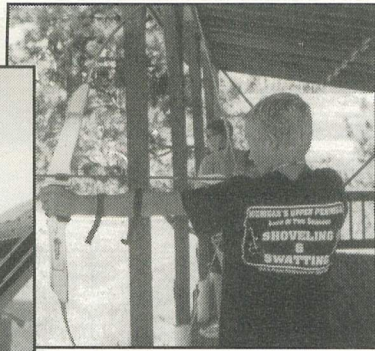


Photo by Dana Petersen

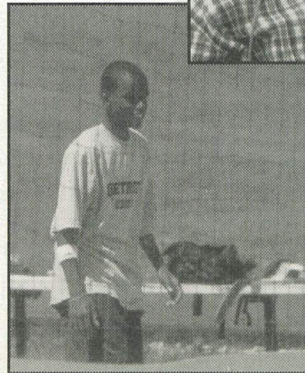


Photo by Maureen Delaney

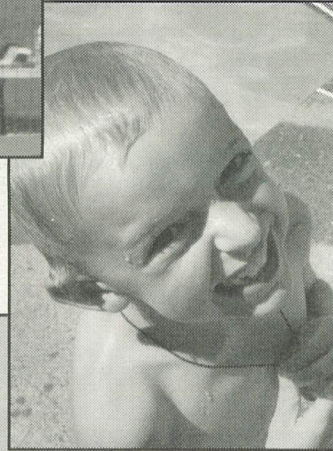


Photo by Brendon DiGiovanni



Photo by Lew Snyder

## Extra Frequent Flyer Miles?

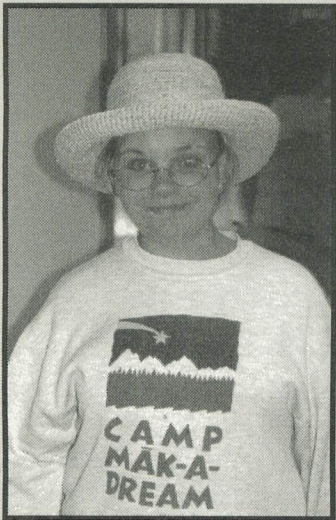
Camp Mak-A-Dream would love to talk to you about donating your unused frequent flyer miles to assist campers who are unable to afford transportation to Camp. These miles can also help make it possible for Camp Mak-A-Dream to bring in national speakers to conduct workshops for our participants.

If you have 25,000 or more miles that you'd like to donate on any of the following airlines, please contact Shirley Hummer in our office at (406) 549-5987 or e-mail [camp@montana.com](mailto:camp@montana.com).

We can accept blocks of 25,000 or more miles from American, Delta, Continental, Horizon / Alaska Air, Northwest / KLM or United.



## SEND A CHILD OR YOUNG ADULT TO CAMP - BUY A CAMPSHIP



Donor Name(s): \_\_\_\_\_

Address: \_\_\_\_\_ Phone #: \_\_\_\_\_

City/State/Zip: \_\_\_\_\_

I would like to purchase \_\_\_\_\_ Campership @ \$500 \_\_\_\_\_ Campership, plus an engraved brick for \$525

Name(s) as you would like it to appear on the brick: (Maximum of 30 characters)

Amount enclosed \$ \_\_\_\_\_ Paid by: Cash \_\_\_\_\_ Check \_\_\_\_\_

MasterCard \_\_\_\_\_ Visa \_\_\_\_\_ American Express \_\_\_\_\_ Discover \_\_\_\_\_

Account # \_\_\_\_\_ Expires: \_\_\_\_\_

Signature: \_\_\_\_\_

Mail to: Camp Mak-A-Dream • P.O. Box 1450 • Missoula, MT 59806

Children's Oncology Camp Foundation is a 501(c)(3) non-profit corporation. Contributions are tax deductible. Tax ID # 81-0472959

Spring 2003, Issue #15



**CHILDREN'S ONCOLOGY  
CAMP FOUNDATION****FULL & PART-TIME STAFF**

Gregg Doerfler  
*Executive Director*

Jennifer Benton  
*Executive Assistant  
Fund Raising & Board  
Development Coordinator*

Kristie Scheel  
*Camp Director*

Shirley Hummer  
*Residential & Volunteer  
Coordinator*

Danny Riddle  
*Food Service / Rental  
Coordinator*

Bob Hummer  
*Maintenance Director*

Bonnie Karrer  
*Bookkeeper*

Carole Hollenback  
*Campus Coordinator*

**BOARD OF DIRECTORS  
OFFICERS**

Ned Becker  
*President*

Tom Copley  
*Past President*

Wayne Hiatt  
*Vice President*

Brian Salonen  
*Secretary*

Scott Burke  
*Treasurer*

Caryl Klein  
*Member at Large*

Jan Peissig  
*Member at Large*

Colleen Powers  
*Member at Large*

**MEDICAL DIRECTOR**

Dr. Tim Carte  
Dr. Stuart Kaplan

**LOCAL BOARD**

Sue Arnold - MI Chapter  
Dave Cotner  
Bruce Danielson  
Paulette Fisher  
Ginny Furshong  
Dr. Henry Gary  
Hadar Granader - MI Chapter  
Heather Hall - MI Chapter  
Bob Homer  
Brenda Lange  
Pete Lawrenson  
Bill McSpadden  
Dr. Bob Shields  
Chuck Sulkala  
Eric Syvrud

**HONORARY BOARD**

Sophie Craighead  
Danny Granader  
Harry & Sylvia Granader  
Susan O'Connor  
Phyllis Washington

**Executive Director's Report**

As our ninth season approaches, there are some wonderful additions to Camp Mak-A-Dream. First, I would like to thank all of our many donors, volunteers, members of our Board of Directors, staff, and especially the children, young adults and adults who attend our camps and programs, for making the past year another huge success. After several years of dreaming, planning and fund raising we are finally constructing a new Health Center. The Health Center will enhance our capabilities to serve individuals who are in the midst of treatment while at camp. This has been a dream, and now that it is a reality, everyone at Camp Mak-A-Dream is very excited.

This season we will host the first Young Adult Survivors Conference as one of our summer sessions. The conference will address the issue of how a young adult cancer survivor can be an advocate for themselves, a mentor to others, and work on both local and national community levels. We are able to offer this unique conference by partnering with and getting support from the Lance Armstrong Foundation. There is also a highly talented group of cancer survivors, medical and business professionals who are contributing to the success of the Young Adult Survivor Conference by being members of a newly formed advisory council.

As always we continue to look for support so that Camp Mak-A-Dream can grow and offer an incredible Montana experience for children and young adults from across the country.

Gregg A. Doerfler  
Executive Director

**Founders' Message**

Dear Friends,

We're delighted that another summer at Camp Mak-A-Dream is upon us.

Through your support and dedication, you have once again made this dream possible for many children and young adults throughout the country.

Each year at Camp Mak-A-Dream our campers take with them new friendships, self-assurance and wonderful memories. And this summer will be no different in bringing joy to so many.

Thank you for your love and support.

Harry & Sylvia Granader

**President's Report**

Dear Friends,

On behalf of the Board of Directors for the Children's Oncology Foundation that is responsible for the operation of Camp Mak-A-Dream, a sincere thank you to all of the contributors and volunteers who make this dream a reality every year. Because of people like you, we are able to provide one of the greatest life experiences for kids, teens and young adults who are in the midst of treatment for or who have survived cancer.

Camp Mak-A-Dream has developed a national following through its tireless efforts in marketing the services of the Camp to social workers, parents, physicians and administrators around the country. Through these efforts, we have built fantastic relationships with various organizations and foundations that share in the dream of helping our mission. This was recently confirmed by our successful campaign to raise funds to build a new Health Center from generous groups all across this country.

Although our location in Western Montana appears remote and off the beaten path, our role in the world of supporting children's oncology and cancer survivorship issues is known throughout the country. Everyone involved with Camp Mak-A-Dream takes a great amount of pride in what this Camp offers and what every camper gains from his or her experience here. We want to ensure that the dreams that are made at Camp continue forever.

Sincerely,  
Ned Becker  
Board President

**Michigan Chapter**

Dear Friends,

It is with great pleasure that I now serve as the president of Friends of Camp Mak-A-Dream, Michigan Chapter. This is going to be an exciting year, beginning with the groundbreaking for the new Health Center at the Camp in Montana.

In Michigan, we are starting a few new projects this year. One of them is the formation of an alumni group for campers in Michigan. This will allow us to keep in touch with the campers and for us to plan local reunions. We also have two new Board members this year, both of whom come with great ideas and lots of energy.

I take great pride in being associated with an organization with the purpose of helping children and young adults with cancer.

I look forward to our annual visit to Montana in July.

Yours sincerely,

Hadar Granader



# Young Adult Survivors Conference:

## A new program for 2003

This summer, Camp Mak-A-Dream will be offering its first Young Adult Survivors Conference (YASC). YASC will take place August 15-19, and will welcome participants who are out of treatment and dealing with some of the long-term effects of having cancer as a child or young adult. This unique educational program is designed to address issues of survivorship, to provide information and tools for self-advocacy and to build bridges of support between young adult cancer survivors who may be experiencing similar journeys through life.

At YASC, survivors can learn skills, discuss issues and share stories confronting issues relating to their experiences long after medical treatment has ended. We believe that there are many stages of cancer survivorship and that bringing together a diverse group of individuals creates a more dynamic, safe and healthy environment in which participants can learn from and share with one another. Ultimately, the goal of YASC is to create a conference environment where participants can obtain the skills necessary to advocate for themselves, others, community and society.



*If you feel that you or someone you know might benefit from this YASC program, please contact our office for an application: (406) 549-5987, e-mail: [camp@montana.com](mailto:camp@montana.com), or on the Web: [www.campdream.org](http://www.campdream.org).*

## Adult Cancer Retreats AT CAMP MAK-A-DREAM

Each fall at Camp Mak-A-Dream we offer multiple-day retreats for adults with cancer. If you or someone you know might be interested in attending either of these retreats, please let us know or have them get in touch with us for more information and a registration form. Applications are also available on our Web site at [www.campdream.org](http://www.campdream.org).

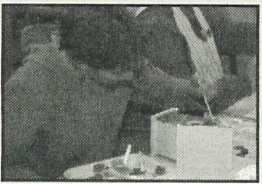


### SEPTEMBER 4-8, 2003

#### 7th Annual Ovarian Cancer Survivors Retreat

*For women diagnosed with ovarian cancer and receiving treatment within the last ten years. Includes all accommodations, meals and retreat activities, plus transportation from the Missoula, Montana, airport to the camp facility in Gold Creek, Montana, 65 miles east of Missoula.*

**Cost: \$250.00**



### OCTOBER 9-12, 2003

#### 8th Annual Women's Cancer Retreat

*For women diagnosed with any form of cancer. Includes all accommodations, meals and retreat activities.*

*Photo by Michael Javins*

**Cost: \$185.00**

Both retreats offer a chance to meet other women in similar situations who understand what it means to be diagnosed with cancer. Space at each retreat is somewhat limited and based on a first-come, first-serve basis so please call to receive a registration form. Retreat activities will include:

- Workshops
- Resource information
- Fabulous food
- Guest speakers
- Recreational activities
- Beautiful cabins
- Networking opportunities
- Art studio sessions
- Fireside chats
- Small group discussions
- Entertainment
- Making new friends

For more information, contact Jennifer Benton at:

Camp Mak-A-Dream, P.O. Box 1450, Missoula, MT 59806 • (406)549-5987  
[www.campdream.org](http://www.campdream.org) • E-mail: [camp@montana.com](mailto:camp@montana.com)

## 2003 WISH LIST

### Equipment

C-clamps  
(2) Industrial chain-saws with 18" bar – Husqvarna or Stihl brand  
Log splitter  
Pipe clamps

### Decorations

Balloons  
Crepe paper in assorted colors  
New taper & votive candles

### Art Studio

Beads for jewelry projects  
Construction paper (assorted colors)  
Cray-pas (oil crayons)  
Glitter glue  
Light cotton & fleece fabric for sewing projects  
Nylon & hemp cord for jewelry making  
Packages of new markers

Paint brushes of all sizes

Stickers

Tempura paints

Tissue paper in variety of colors

### Nature Education

Binoculars  
Gardening tools & gloves

### Medical Supplies

Cough drops  
Otoscope  
Ophthalmoscope  
Visine & artificial tears  
Zinc oxide

### Camp Activities & Programs

Gift certificates to Barnes & Noble to build cancer resource library

Baseball gloves (child & adult sizes)

CDs of popular music

Costumes for dress-up (60s-70s era)

Disposable cameras

Flashlights & headlamps with batteries

Fly-fishing rods & reels

Kites

Megaphone

Musical instruments

Small blank writing journals

Swim masks & goggles

### Office Supplies & Equipment

AA batteries

Card-stock paper in assorted colors

Color ink jet printer – newer model

Computer (PC-Windows '98 or newer)

Digital camera

Laser printer (PC) in working order

Nice, decorative 8.5"x11" paper

Night-lights with bulbs

Recordable blank CDs & plastic cases

Small alarm clocks

Sharpie markers in assorted colors

### Little Things

Individually wrapped candy

Laffy taffy

Mini candy bars

HELP MAKE DREAMS COME TRUE.  
**CALL (406) 549-5987**





**Children's Oncology Camp Foundation**  
 P.O. Box 1450  
 Missoula, MT 59806-1450

NON-PROFIT  
 U.S. Postage  
**PAID**  
 Permit #368  
 Missoula, MT

# What's Been Happening?

## Hamilton Gun Club 24-Hour "Shoot for a Dream"

On June 28, 2002, five members of the Hamilton Trap Club stepped up to the shooting line and called for their first targets to begin a 24-hour quest to beat the ATA World Doubles Record of 30,000 squad targets. Their goal was not only to break the record, but also to do it "for the kids" at Camp Mak-A-Dream. The event took place at the Hamilton Trap and Skeet Club and raised more than \$15,000 for the Camp.



*Left to right: Larry Ward, Ray McBride, Paul Harris, Bob McBride, Carl Harris*

## New Chicago Chapter

Camp Mak-A-Dream is pleased to announce the start of a new "Friends of Camp Mak-A-Dream" chapter in the Chicago, Illinois, area. If you, or someone you know, are interested in getting involved with this group please contact Mark Claypool (630) 762-0614 or e-mail [markclaypool@covad.net](mailto:markclaypool@covad.net). Welcome, Friends in Chicago!

## Quick Draw Gala 2003

In January, the third annual Quick Draw Gala took place at the DoubleTree Hotel in Missoula. This is one of our largest, annual fund-raising events, bringing in more than \$40,000 in one night. Its success was due in large part to the artists who created and donated paintings inspired by the Camp Mak-A-Dream experience. Artists in our live auction this year included: Dudley Dana, Ron Jenkins, Kendahl Jan Jubb, Steven Krutek, Robert Neaves, Cliff Rossberg, Brian Schweyen and Camp Mak-A-Dream campers.

We appreciate all of the donations and thank everyone who attended and helped make the event possible.



## Western Montana Wine Festival

On March 1, the 20th annual Western Montana Wine Festival, sponsored by Earl's Distributing and the DoubleTree Hotel, took place with a silent auction raising nearly \$7,500. A percentage of ticket sales benefited Camp Mak-A-Dream as well. Thanks to the DoubleTree Hotel, everyone who donated items and attended this year's wine festival, and to our friends at Earl's Distributing for including Camp in this successful event again this year.