



The Dreamcatcher

CAMP MĀK-A-DREAM • GOLD CREEK, MONTANA • SPRING 2002 • ISSUE # 14

A Publication of the Children's Oncology Camp Foundation

★ OUR MISSION ★

The mission of the Children's Oncology Camp Foundation is to provide Camp Mak-A-Dream as a medically supervised cost free experience for children and young adults with cancer.

2002 SCHEDULE

JANUARY 4-11
YOUNG ADULT CONFERENCE
Young Adults (ages 18-25) with Cancer

JUNE 27-30
DIABETES YOUTH RETREAT
Kids & Teens with Diabetes

JULY 6-13
KIDS CAMP
Kids (ages 6-12) with Cancer

JULY 17-24
TEEN CAMP
Teens (ages 13-17) with Cancer

JULY 28-31
SIBLINGS CAMP
Siblings (ages 6-17) who have a Brother or Sister with Cancer

AUGUST 4-11
YOUNG ADULT CONFERENCE
Young Adults (ages 18-25) with Cancer

AUGUST 15-22
YOUNG ADULT CONFERENCE
Young Adults (ages 18-25) with Cancer

SEPTEMBER 11-15
6TH ANNUAL OVARIAN CANCER SURVIVORS RETREAT
Women (ages 18+) Diagnosed with Ovarian Cancer

OCTOBER 10-13
7TH ANNUAL WOMEN'S CANCER RETREAT
Women (ages 18+) Diagnosed with Cancer

HELP MAKE DREAMS COME TRUE.
CALL (406) 549-5987
WWW.CAMPDREAM.ORG

How does an experience at Camp Māk-A-Dream impact the lives of participants?



The opportunity for cancer survivors to come together with individuals of their same age, with a like diagnosis or with similar treatment experiences is one of the reasons participants come to camp.

Another reason is, if only for a week, to share their stories with others who understand them. Many children and young adults with cancer have never met anyone else their age with cancer.

Camp Mak-A-Dream's programs are designed specifically around not only the special medical needs of our participants, but around their emotional and psycho-social needs as well. This is a place for children and young adults with cancer to meet new friends, try new things, address fears and challenges, increase self-confidence and independence, and feel "normal."

Cancer survivors have a wide variety of medical needs. Camp Mak-A-Dream has a facility and medical professionals who can care for our participants, even in the midst of treatment.

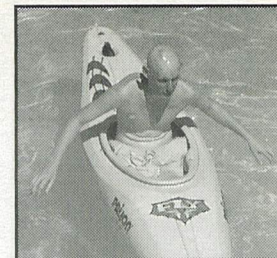
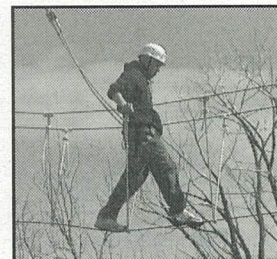
Participants get to meet a wide variety of people at camp. Camp Mak-A-Dream welcomes children (ages 6-12) with cancer, teens (ages 13-17) with cancer, young adults (ages 18-25) with cancer,



and siblings (ages 6-17) of cancer survivors, from all across the country, with different ethnicity and socio-economic backgrounds – but all with the common bond of cancer. All of these camp sessions are offered to participants FREE of cost.

Camp fosters bonding and offers tools to participants to live a fuller life with cancer.

Sessions are designed to address the many issues of living with cancer and include workshops, guest speaker presentations and small group discussions. There is even a special time set aside each day called cabin chat that allows participants to have in-depth conversations about their hopes, their fears, their dreams.



Who do you know with Cancer?

You can help us serve even more people by telling someone you know with cancer about Camp Mak-A-Dream. Share this newsletter with them or have them contact us for more information on the many programs we offer throughout the year.

Contact us at: Children's Oncology Camp Foundation / Camp Māk-A-Dream
P.O. Box 1450 • Missoula, MT 59806 • (406)549-5987 • www.campdream.org

TABLE OF CONTENTS

How does an experience at Camp Mak-A-Dream impact the lives of participants?1
 A Day at Camp2
 Who do you know with cancer?2
 Employment Opportunity2
 Partnership with the National Auto Body Council5
 Rent Gold Creek Lodge5
 Buy a Campership5
 Executive Directors Report6
 Dear Friends and Supporters ..6
 Founders Message6
 Show Your Camp Pride6
 In Memory3
 Remember Those You Love3
 How You Can Help4
 Upcoming Fund Raisers4
 Frequent Flyer Miles4
 The Palette7
 Wish List7
 Adult Cancer Retreat7
 Quotes from Participants8
 Camper Poem8

Send Us an E-Mail
 camp@montana.com

Visit Our Web Site
 www.campdream.org

Camp Mak-A-Dream is a non-profit 501 (c) (3) organization and follows all federal guidelines to maintain this status. Please feel free to contact the camp office if you desire more financial information.

*Newsletter Coordinator:
 Jennifer Benton*

*Layout, Production & Proofing:
 Partners Creative:
 Jason Pounds, Corey Smith,
 Carroll Anne Wellman*

*Contributing Photographers:
 Terry Burns, Mike Robinson*

*Contributing Writers:
 Jennifer Benton*

*Printing:
 Missoulian - Deb Larson*

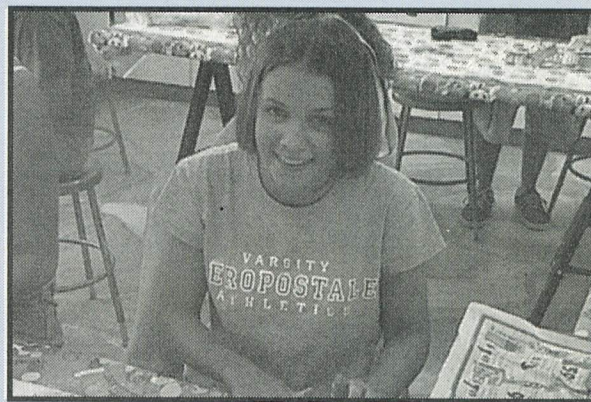
© 2002 Children's Oncology Camp Foundation

A DAY AT CAMP

*What happens during a day at camp?
 Here is a sample of the kinds of activities that take place in a typical day during our summer camps at Camp Māk-A-Dream.*

KIDS CAMP

- 8:30 am Rise & Shine
- 9:00 am Breakfast
- 10:30-12:30 Art Studio - Dreamcatchers; hike up the hill; ropes course (cabin rotations)
- 1:00 pm Lunch
- 2-3:00 pm F.O.B. (flat on back rest period)
- 3-5:00 pm Building birdhouses; art studio-kaleidoscopes, field hockey; climbing wall (cabin rotations)
- 6:00 pm Dinner
- 7-9:00 pm Carnival night! Clowns, games, face painting
- 9:00 pm Cabin Chat
- 10:00 pm Lights out



YOUNG ADULT CONFERENCE

- 9:00 am Continental Breakfast
- 10:00 am Guest Speaker
- 10-12:30 Workshop Break-Out Sessions:
 - A) Pain Management
 - B) Journeying with Grief
- 12:45 pm Lunch
- 2-4:00 pm Free Choice Recreation:
 - Ropes Course • Archery • Pool
 - Art Studio • Nature Activity
- 4:30-5:45 pm Workshops: Look Good...Feel Better
 Comedy Improv & Drama
- 6:00 pm Dinner
- 7-9:00 pm Health & Wellness Expo.
- 9:30 pm Memorial ceremony
- 10:00 pm Cabin Chat - Open campus until Midnight - Art studio, Hot Tub, Rec. Room Open

Who do you know WITH CANCER?

Camp Māk-A-Dream would like to serve as many individuals living with cancer as we can...but we need your help.

Our Programs:

We offer programs for participants of all ages from all geographic areas:

- Children with cancer (ages 6-12)
- Teens with cancer (ages 13-17)
- Young Adults with cancer (ages 18-25)
- Siblings of cancer patients (ages 6-17)
- Women with cancer (ages 18+)
- Women with ovarian cancer (ages 18+)

Professional medical staff and on-site health care center allow us to accommodate cancer patients who are currently undergoing treatment.

Won't you help us serve your family, friends or members of your community?

Please pass this article or newsletter along to someone you know with cancer.

EMPLOYMENT OPPORTUNITY

Camp Mak-A-Dream is looking for someone to fill a full-time maintenance position at the camp facility in Gold Creek, Montana. Applicants must have the following basic skills and be willing to live on site (living quarters provided):

- **Carpentry**
- **Plumbing**
- **Electrical**
- **Mechanical**

Salary depends on experience. Please contact Gregg Doerfler, Executive Director, at (406) 549-5987 for more information.



In memory...

Each year we are reminded that the smiles and friendships that are formed at camp cannot last forever. Please join us in honoring the lives of the children and young adults who have lost their lives over the last year. We extend our deepest sympathies to their families and friends and are honored to have known them through their experiences at Camp Mak-A-Dream.



Reed Barber
Washington
19 years old
September 2001



Sarah McClure
Montana
23 years old
November 12, 2001



Kimberly Ruts
Minnesota
19 years old
Winter 2001



John Brennan
Oregon
21 years old
February 7, 2002



Erick McGrady
Washington
10 years old
July 24, 2001



Isabelle Sarrasin
B.C., Canada
23 years old
September 25, 2001



Alison Brown
Montana
9 years old
January 11, 2002



Erin Moe
Wisconsin
22 years old
September 2001



Brian Stuedeman
Minnesota
24 years old
March 2, 2001



Joshua Cavagnaro
New Jersey
19 years old
August 16, 2001



Billy Niland
Montana
23 years old
December 18, 2001



Emmanuel Summers
California
17 years old
May 2001



Heather Clancy
Michigan
14 years old
November 3, 2001



Vanessa North
B.C., Canada
18 years old
April 16, 2001



Regina Thorne
Minnesota
20 years old
November 30, 2001



Jeraline James
Minnesota
23 years old
October 11, 2001



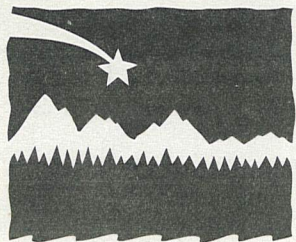
Brandon Putnam
Minnesota
18 years old
May 7, 2001



Lee Umbenhauer
Pennsylvania
18 years old
January 2002



Rachel Wall
Michigan
21 years old
January 26, 2001



**CAMP
MAK-A-
DREAM**

A WONDERFUL WAY TO REMEMBER THOSE YOU LOVE

Help make a dream come true for a child or young adult with cancer. If you or someone you know would like to make a generous gift in a loved one's name, just fill this out and forward it along with your gift to the Camp Mak-A-Dream office at P.O. Box 1450, Missoula, MT 59806. All gifts will be acknowledged with a personalized keepsake card.

This gift is made in _____ honor _____ memory of _____

Given by _____

Send the card to:

Name: _____

Address: _____

City / State / Zip: _____

Credit card contributions may be made by calling (406) 549-5987 or by fax at (406) 549-5933. Spring 2002, Issue #14

HOW YOU CAN HELP

Other ways you can give:

Camperships

Sponsor a child or young adult for a week of camp with a \$500 donation.

You can also have your name permanently engraved on a brick in the walkway at camp for an additional \$25.

Memorial or Honorarium Donations

Make a donation in memory of a friend or loved one, or in honor of a holiday or special occasion. Camp Mak-A-Dream will send a keepsake card to the family or honoree.

Make a Pledge

Pledge an amount to be paid over a period of time (monthly, quarterly, annually).

Give an item from the Camp Wish List

There are lots of every day household items and goods that we need each camp season. Please see the Wish List on page 7.

Give over time with Planned Giving

You can name Camp Mak-A-Dream in your will or as a beneficiary of your life insurance policy. Planned giving is an easy way to make a big difference.

Help Build our Endowment

Help Camp Mak-A-Dream build an endowment fund large enough to pay for operations and programs in the future by utilizing the Montana Endowment Tax Credit.

Help a Child with Transportation to Camp

Many campers find it difficult or even impossible to attend camp simply because they cannot afford to get to Missoula, Montana from other parts of the country. You can pay for a plane or bus ticket, or even donate unused frequent flyer miles. Please see article on frequent flyer miles in this issue of the Dreamcatcher.

Transfer Matured Stocks

You can also make a donation by transferring matured stocks to Camp Mak-A-Dream.

Shop at Albertson's Grocery Stores

Giving is as easy as shopping at Albertson's grocery stores across Montana with a "Community Partners" card. The card is free and with each purchase you make, a portion of that purchase amount is donated to Camp Mak-A-Dream on a quarterly basis. Call the camp office to obtain your free "Community Partners" card.

Have us Speak at Your Civic Organization or Business Meeting

We love to share what's happening at Camp Mak-A-Dream with members of different

communities who help support us. If you are a member of a civic group or would like to hear about Camp at your next business meeting, please contact Jennifer Benton at (406) 549-5987 to arrange a speaking engagement date.

Display our Literature

Camp Mak-A-Dream would appreciate the opportunity to display our brochures at your place of business or professional office. We need to get the word out about our cost-free programs for cancer patients to as many individuals as possible and would love to have you assist us in that effort.

Purchase a Camper Designed T-Shirt

Show off your Montana pride by proudly wearing a T-shirt featuring artwork by one of our campers. Please find the order form for this shirt on page 6 of this newsletter. A majority of the purchase price is also a tax deductible donation.

Rent our Facility

You can rent the beautiful Camp Mak-A-Dream facility, September through mid-June, for your next gathering or meeting. Please see page 5 for further information.

Volunteer at Camp

Spend the most incredible week imaginable volunteering at Camp Mak-A-Dream. Applicants must be at least 18 years of age and go through an extensive application and interview process. Applications are available by calling our office (406) 549-5987 or visiting our web site www.campdream.org.

Donate Frequent Flyer Miles

You can help a child or young adult with cancer get to camp by donating your unused frequent flyer miles. Please see article below for more information.

Upcoming Fund Raising Events

Saturday, June 22

RATPOD Benefit Bicycle Ride • Dillon, Montana

Friday, June 28-Saturday, June 29

Hamilton Gun Club World Record Skeet Shoot • Hamilton, Montana

Friday, July 12

3rd Annual Patsy O'Neill Classic Golf Tournament
Butte Country Club, Butte

July - Date pending

Tournament of Dreams Golf Tournament
Village Greens Golf Course, Kalispell

Friday, October 18

1st Annual Mak-A-Dream Marathon Golf Extravaganza
Missoula Country Club, Missoula

More information about any of the above events, or if you have a fund raising idea for Camp Mak-A-Dream, please contact Jennifer Benton at the foundation office (406)549-5987, e-mail: camp@montana.com or on the web at: www.campdream.org.

As a non-profit organization, all funding for Camp Mak-A-Dream comes from private donations, gifts, grants and fund raising events such as those listed above. Donations are tax deductible.

Extra Frequent Flyer Miles?



Camp Mak-A-Dream would love to talk to you about donating your unused frequent flyer miles to assist campers who are unable to afford transportation to camp. These miles can also help make it possible for Camp Mak-A-Dream to bring in national speakers to conduct workshops for our participants.

If you have 25,000 or more miles that you'd like to donate on any of the following airlines, please contact Shirley Hummer in our office at: (406)549-5987 or e-mail: camp@montana.com.

For travel on Northwest:

Looking for 25,000+ miles from Northwest / KLM, or Horizon / Alaska Air

For travel on Delta:

Looking for 25,000+ miles from Delta or United

For travel on Horizon / Alaska Air:

Looking for 25,000+ miles from Horizon / Alaska Air, Northwest / KLM, or American

United Airlines:

Looking for 25,000+ miles from United or Delta

PARTNERSHIP WITH THE NATIONAL AUTO BODY COUNCIL

The collision repair industry, led by the National Auto Body Council, is partnering with Camp Mak-A-Dream to raise awareness and funding for a new health care center building at the camp facility.

The National Auto Body Council is a non-profit organization made up of collision repair industry professionals. Members and supporters of the N.A.B.C. all across the country have pledged to raise \$500,000 to build a new health center building at the Camp in Gold Creek, MT which will allow the camp to serve even more participants in the midst of their cancer treatment. The deadline to raise this money is December of this year. The Camp Mak-A-Dream project was also presented at this year's national NACE convention in Las Vegas where it received a very positive response.

N.A.B.C. members are raising funds in a variety of ways:

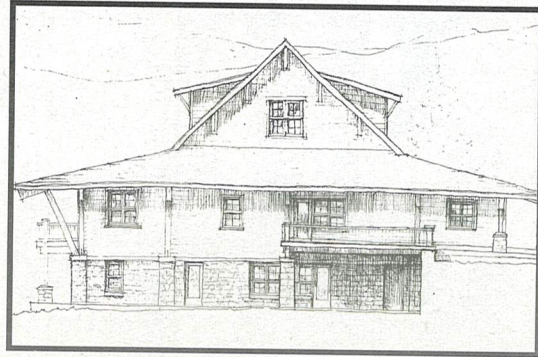
- Golf tournament in Kansas City, Missouri
- Swimming from Alcatraz in the "Shark Fest" event in San Francisco, CA
- Dinner / Dance and auction held in Macomb Township, Michigan

If you would like to host an event or get involved with the efforts of the N.A.B.C. and members of the collision repair industry, please contact the camp office for more information at (406)549-5987 or contact the N.A.B.C. directly at:

NATIONAL AUTO BODY COUNCIL
P.O. Box 3368 - St. Charles, IL 60174
(630)762-0732



New health center plan



Camp Mak-A-Dream has served more than 1800 individuals from all across the United States since opening in 1995.

RENT Gold Creek Lodge



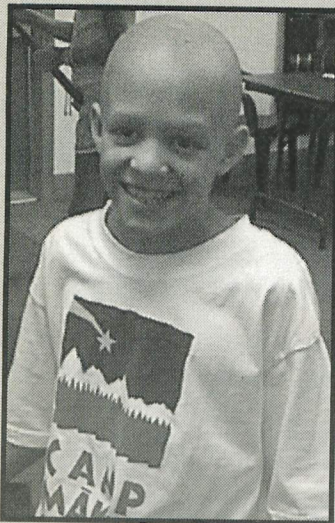
When you choose to hold your business, family or group event at Gold Creek Lodge, home of Camp Mak-A-Dream, you'll be enjoying more than just a fine facility in a mountain landscape. You'll also be helping to support the programs of Camp Mak-A-Dream. The facility is available for rental groups of 10-110 people, for day-long meetings or for several-day retreats from September through mid-June.

Some of the things Gold Creek Lodge has to offer:

- Fully accessible buildings
- Main lodge with meeting rooms, recreation room & dining hall
- Four cabins with common rooms & fireplaces
- Accessible, heated swimming pool & hot tub
- Outdoor patio area with BBQ grills & picnic tables
- Sleeping capacity of 110 people
- Art studio building
- Health care center
- Meeting & activity rooms
- Ropes course, sand volleyball court, basketball hoop & archery range
- Smoke-free facility & grounds
- Fine dining & variety of menu options
- Competitive rates & excellent service

Let us host your next meeting or gathering at Gold Creek Lodge. Our calendar fills quickly, so call (406)549-5987 today to reserve your dates or e-mail us at: camp@montana.com. Prices and additional facility photos are available on our web site at: www.campdream.org.

SEND A CHILD OR YOUNG ADULT TO CAMP - BUY A CAMBERSHIP



Donor Name(s): _____

Address: _____ Phone #: _____

City/State/Zip: _____

I would like to purchase _____ Campership @ \$500 _____ Campership, plus an engraved brick for \$525

Name(s) as you would like it to appear on the brick: (Maximum of 30 characters)

Amount enclosed \$ _____ Paid by: Cash _____ Check _____

Mastercard _____ Visa _____ American Express _____ Discover _____

Account # _____ Expires: _____

Signature: _____

Mail to: Camp Mak-A-Dream • P.O. Box 1450 • Missoula, MT 59806

Children's Oncology Camp Foundation is a 501(c)(3) non-profit corporation.
Contributions are tax deductible. Tax ID # 81-0472959

Spring 2002, Issue #14

**CHILDREN'S ONCOLOGY
CAMP FOUNDATION
FULL & PART-TIME STAFF**

Gregg Doerfler
Executive Director
Jennifer Benton
*Executive Assistant /
Fund Raising & Board
Development Coordinator*
Kristie Scheel
Camp Director
Shirley Hummer
*Residential & Volunteer
Coordinator*
Danny Riddle
*Food Service / Rental
Coordinator*
Bonnie Karrer
Bookkeeper
Carole Hollenback
Campus Coordinator
Miranda Bowen-Cofer
Rental Assistant

**BOARD OF DIRECTORS
OFFICERS**

Ned Becker
President
Tom Copley
Past President
Caryl Klein
Vice President
Brian Salonen
Secretary
Scott Burke
Treasurer
Jan Peissig
Member at Large
Scott Seifert
Member at Large

MEDICAL DIRECTOR

Dr. Tim Carte
Dr. Stuart Kaplan

LOCAL BOARD

Dave Cotner
Bruce Danielson
Paulette Fisher
Dr. Henry Gary
Brian Granader
Wayne Hiatt
Bob Homer
Brenda Lange
Pete Lawrenson
Barry Shapiro
Dr. Bob Shields
Chuck Sulkala
Eric Syvrud

REGIONAL BOARD

Lowell Bartels
John "Harp" Cote
Max Ericson
Bob Gauthier
Phil Grimm
Dick Hughes
Debbie Jackson
Mark McDonald
Russ Ritter
Mark Staples

HONORARY BOARD

Sophie Craighead
Danny Granader
Harry & Sylvia Granader
Susan O'Connor
Phyllis Washington

Executive Director's Report

We are busy once again with preparations for our eighth season at Camp Mak-A-Dream. Staff is recruiting children and young adults to attend our five summer sessions.

With the events of September 11, the nation showed an incredible outpouring of love and care for the people of New York and Washington, D.C. This understandable reaction overshadowed, for a time, the mission of charities such as Camp Mak-A-Dream. But in the ensuing months since that tragedy, we have seen that Camp Mak-A-Dream still holds a strong and special place in many people's hearts. We are eternally grateful to those who made 2001 such a successful season. Now we're looking forward to another summer and know that because of all of the many thoughtful contributions and sincere volunteers, it will be another fun and meaningful summer.

Gregg Doerfler

Founders' Message

Dear Friends,

As most of you know, Camp Mak-A-Dream was just a spark in the back of my mind and in my heart back in 1995. We have since grown from one man's small idea to an organization serving hundreds of children and young adults from all around the country, Canada and from as far away as Alaska. I am very proud of what we have accomplished and wish to thank everyone who has helped us with their time, finances and most of all their hearts.

Harry & Sylvia Granader

*"My favorite camp experience
was the nature trip, because
I found out you have gold
rocks 100 years old and
wild horses in Montana,"*

Brian, camper

President's Report Dear Friends and Supporters,

Camp Mak-A-Dream is actively searching out kids and young adults with cancer who want to experience the wonders of Montana - FOR FREE!!

As our staff prepares for the 8th season at Camp Mak-A-Dream, we want everyone to know that we are accepting applications for our summer camping season. If you have a friend, business associate, family member or any other contact who may have a child or young adult diagnosed with cancer, tell them about Camp Mak-A-Dream and the opportunity to have an experience of a lifetime. Camp Mak-A-Dream is about helping cancer patients live more fully with their disease, providing a safe place for them to express their hopes and fears, and giving them an opportunity to feel "normal."

To campers, Camp Mak-A-Dream is a playground full of great experiences including meeting new friends, participating in the abundant outdoor activities and adventures in Montana's Big Sky country, as well as spending time learning how others cope with the many issues of having cancer.

To parents and families considering sending a loved one to Montana for camp, safety and health are at the top of everyone's mind. We have a team of medical professionals at the camp 24 hours a day to care for our participants and to assist with any medical situation that may arise. Since Camp Mak-A-Dream also accepts cancer patients in treatment, we understand the special medical needs and requirements to properly and effectively administer these treatments. We are prepared to take care of your son or daughter.

We look forward to hearing from you to assist the camp and this great cause any way you can. Our efforts will continue to focus on how to make the experience for our campers unique and memorable. The dream is still alive and we look forward to the 2002 season and to making it the best yet.

Sincerely,
Ned Becker, President
Board of Directors

SHOW YOUR CAMP MĀK-A-DREAM PRIDE



You can support Camp Māk-A-Dream in a number of ways, including sporting this camper-designed shirt, or purchasing another item from our merchandise catalog.

SIZES: SMALL - 2XL
COLOR: WHITE - 100% COTTON
PRICE: \$30.00

If you would like to order a shirt, or have us send you our merchandise catalog, call us at (406) 549-5987.

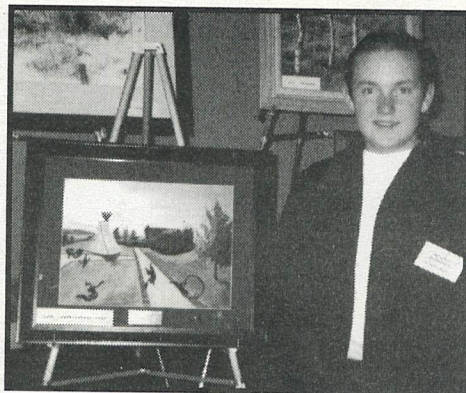
* Of the purchase price, \$25.00 is also a tax-deductible donation.

the Palette

Each year at camp wonderful works of art are created. In each issue of this newsletter, The Palette section features a different piece made by one of our participants.

On January 12, 2002 we hosted the 2nd annual Camp Mak-A-Dream Quick Draw Gala & Auction at the DoubleTree Hotel in Missoula, MT. Like last year, the event was a success thanks in part to one of our campers, Brandon McIlhinney. Brandon is from Colorado and has attended Camp Mak-A-Dream each of the last two summers. For this event, Brandon created a one-of-a-kind image of Camp Mak-A-Dream, through his eyes.

The event featured Brandon and several well-known professional artists from across Montana whose art helped raise nearly \$40,000 for Camp that evening! Our thanks to everyone who donated works of art, attended the event and made purchases at the auction; we couldn't have done it without you.



Brandon McIlhinney,
cancer survivor, speaking about his experience as a camper at Camp Mak-A-Dream as his painting of camp is sold at the recent Quick Draw Gala.

Adult Cancer Retreat AT CAMP MAK-A-DREAM

Each fall at Camp Mak-A-Dream we offer multiple day retreats for adults with cancer. If you or someone you know might be interested in attending either of these retreats, please let us know or have them get in touch with us for more information and a registration form.

SEPTEMBER 11-15, 2002 6th annual Ovarian Cancer Survivor's Retreat

For women diagnosed with Ovarian cancer. Includes all accommodations, meals and retreat activities, plus transportation from the Missoula, MT airport to the camp facility in Gold Creek, MT 65 miles east of Missoula.
Cost: \$350.00

OCTOBER 10-13, 2002 7th annual Women's Cancer Retreat

For women diagnosed with any form of cancer. Includes all accommodations, meals and retreat activities.
Cost: \$185.00

Both retreats offer a chance to meet other women in similar situations who understand what it means to be diagnosed with cancer. Space at each retreat is somewhat limited and based on a first come, first serve basis. Please call to receive a registration form.



Retreat activities will include:

- Workshops
- Resource information
- Fabulous food
- Guest speakers
- Recreational activities
- Beautiful cabins
- Networking opportunities
- Art studio sessions
- Fireside chats
- Small group discussions
- Entertainment
- Making new friends

For more information, contact Jennifer Benton at: Camp Mak-A-Dream, P.O. Box 1450, Missoula, MT 59806 • (406) 549-5987
Web: www.campdream.org
E-mail: camp@montana.com

2002 WISH LIST

Equipment

Industrial 12-volt battery charger
10" contractors table saw with mobile base
(4) 12-volt or higher cordless drills
16 1/2" floor drill press
8" wheel grinder with wire brush wheel
(2) industrial chainsaws with 18" bar - Husqvarna or Stihl brand
8 1/2" or 10" slide compound miter saw
Pipe clamps
C-clamps
Belt sanders
Safety glasses
Hearing protectors
Jig saw
Extension cords with 3-receptor ends
Iron "Montana style" floor lamps for cabins
Portable CD players for cabins
Helium tank for balloons
(2) Remote control slide projectors

Decorations

New taper & votive candles
Balloons

Art Studio

Stickers
Light cotton & fleece fabric for sewing projects
Beads for jewelry projects
Pottery clay
Construction paper
Packages of new markers
Tye dye supplies (dye, white cotton t-shirts, pillowcases)
Fimo or Sculpty polymer clay
Boxes of white 6"x6" tiles to paint
Tissue paper in variety of colors

Nature Education

Track casting plaster

Wildlife bones

Fun nature books
Binoculars
Gardening tools

Medical Supplies

Alcohol swab sticks
Betadine & Betadine pads
Hair clippers
Medical cups
Otoscope
Ophthalmoscope
Cough drops
Visine & Naturale Tears
Triple antibiotic ointment
Zinc oxide

Camp Activities & Programs

Gift certificates to Barnes & Noble to build cancer resource library
CD's of popular music
Baseball gloves (child & adult sizes)
Fly-fishing rods & reels
Costumes for dress-up (60's-70's era)
New "Montana wildlife" stuffed animals
Shuffle board set
Croquet set
Tether ball set
Cross-country skis, boots & poles
Used VCR movies (for kids, young adults & adults)
Flashlights & headlamps with batteries
Megaphone
Karaoke machine
Disposable cameras
Recordable blank CD's
Small blank writing journals

Little Things

Lifesavers
Mini candy bars
Laffy taffy
Batteries (AA & D sizes)

**HELP MAKE DREAMS COME TRUE.
CALL (406) 549-5987**



Children's Oncology Camp Foundation
P.O. Box 1450,
Missoula, MT 59806-1450

NON-PROFIT
U.S. Postage
PAID
Permit #368
Missoula, MT

Quotes from Participants

"I just finished eight long months of chemotherapy for Hodgkins disease. Until attending Camp Mak-A-Dream, I had never met anyone else my age with cancer. After my experience here I no longer feel alone, or fearful of the future. The people I met here will be a continuing support system for the bumps ahead. Thank you for making this possible."

Vanessa, Young Adult Conference participant

"I had such a great time at camp. I made many new friends, campers and counselors. The scenery was beautiful and the weather was great! I fished for the first time in my life. I can't thank you enough."

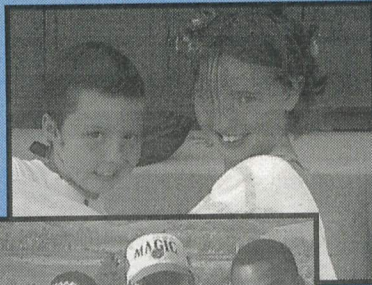
Audrey, Young Adult Conference participant

"Thanks for making my camp experience so fun! I enjoyed it very much and my counselors were so nice. I got to meet so many new people from different places. Thank you for making it all possible."

Shay, Siblings Camp participant

"Your camp was fun. You made me happy. I got a lot of good memories. You are a great camp - the best one I have been to. I will miss you all."

Ashlee, Kids Camp participant



Hills and Mountains

Sunshine and white marshmallow like clouds.

Evergreen trees and grass,

To your eyes content.

Red and purple sunsets,

Fading into the darkness of night.

A trickle of water,

becomes the great Mississippi

But all the beauty that exists,

does not compare,

To the people who come here.

*Poem by
Audrey, YAC participant*