

CAMP MAK-A- DREAM

• OUR MISSION •

The mission of the Children's Oncology Camp Foundation is to provide an appropriately supervised, cost-free camp (Camp Mak-A-Dream) for children and young adults with cancer.

The camp will be available on a priority basis to children with cancer, young adults with cancer and adults and families dealing with cancer.

In addition to these groups Camp Mak-A-Dream desires to accommodate, as much as possible, groups of children with other medical needs interested in a camp experience.

CAMP MAK-A-DREAM 2000 SCHEDULE

DIABETES TEEN RETREAT

June 29-July 2

KIDS CAMP (AGES 6-17)

July 7-14

YOUNG ADULT CONFERENCE (AGES 18-25)

July 17-24

SIBLINGS CAMP (AGES 6-17)

July 27-August 2

YOUNG ADULT CONFERENCE (AGES 18-25)

August 6-13

KIDS CAMP (AGES 6-17)

August 17-24



HELP MAKE
DREAMS COME TRUE.
CALL (406) 549-5987

The Dreamcatcher

GOLD CREEK, MONTANA

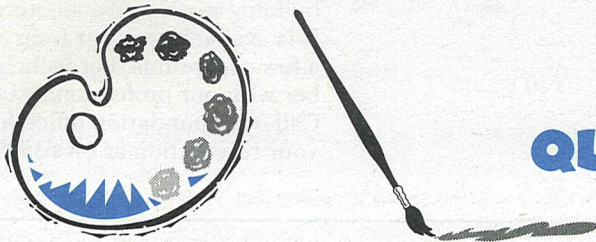
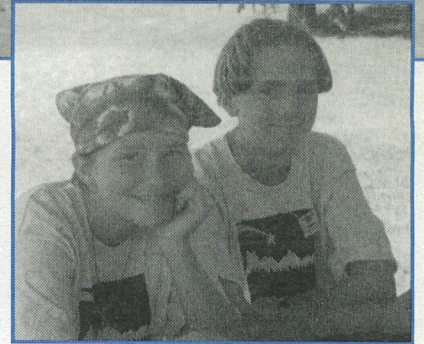
• A Publication of the Children's Oncology Camp Foundation •

SPRING 2000 - ISSUE # 12

What's Happening at Camp Mak-A-Dream?

Another Montana winter has come and gone, which means we're once again gearing up for the summer camp season at Camp Mak-A-Dream. This is already an exciting year with expectations of more than 250 children and young adults from around the country coming together for a week of fun—cost free—in Gold Creek, Montana. We're happy to have an addition to our summer schedule of camps this year with a teen retreat in June, being put on by the American Diabetes Association and hosted by Camp Mak-A-Dream. Plus, we're offering five camps for children and young adults with cancer, and the ever-popular siblings' week.

We hope you will take a moment from your busy life to read through this issue of the *Dreamcatcher* and see all that's happening at Camp Mak-A-Dream and in your own community. All of us at Camp Mak-A-Dream appreciate your interest, your time and your support.



QUICK DRAW OPEN HOUSE AND ART AUCTION

Saturday, September 30 will be an exciting day at Camp Mak-A-Dream. We are hosting a Quick Draw and open house at the camp facility in Gold Creek. Several well-known Montana artists will be present, each creating a work of art inspired by the camp's setting. The afternoon is open to the public. We invite all Montana communities to come out to camp, tour the facility, learn more about Camp Mak-A-Dream, enjoy refreshments and watch these fine artists at work. Later that same evening at the DoubleTree Hotel in Missoula will be a formal sit-down dinner and auction during which the artwork created earlier that day at camp will be auctioned off to the highest bidders. Tickets to the dinner and auction are \$100 per plate and are available through our Foundation office, (406) 549-5987. The DoubleTree Hotel is also offering a special package if you would like to spend the night. This package includes a room for two, plus brunch on Sunday morning for \$115. Space is limited, so please contact the DoubleTree Hotel directly at (406) 728-3100 for this special price.

Artists will include: Marcia Davis, Kendall Jan Jubb, Ron Jenkins, Bob Neaves, Larry Pirnie and two campers from Camp Mak-A-Dream.

WELCOME TO OUR NEWEST STAFF MEMBERS!

The Children's Oncology Camp Foundation is happy to have three new staff members join us in time for the upcoming 2000 summer camp season. Toby Quinn has joined the Foundation staff as Assistant Camp Director / Residential; Kristie Scheel is our new Assistant Camp Director / Program; Shirley Hummer, a long-time volunteer and part-time employee, has come on board full time as our Receptionist and Volunteer Coordinator. We are happy to have all three of these individuals as part of the Camp Mak-A-Dream family.

Toby comes from Washington state where he worked at a summer camp as an assistant director. After attending Gonzaga University in Spokane, he spent a year volunteering with AmeriCorps, a federally-funded community work organization, before moving to Missoula. Toby brings with him a passion for community development and enriching children's lives. His interests include playing guitar and golfing.

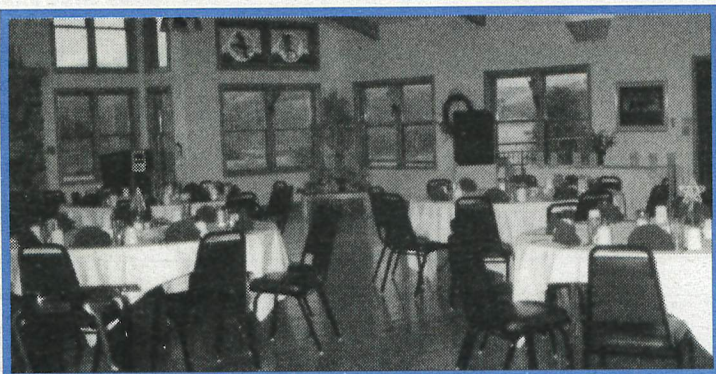
Kristie is an Illinois native who came to Missoula in 1997 to pursue her master's degree in environmental studies with an emphasis in education and non-profit management. She has worked with kids and young adults in a variety of different

settings for the past seven years. She has led summer wilderness education programs, worked as an education program director for conservation organizations, as well as coordinated and supervised a community service program for teenagers based in Central America. Kristie is also an emergency medical technician (EMT). Kristie believes in working with individuals in an atmosphere of fun and learning, one which allows them to have profound, direct life-enriching experiences. Her interests include travel, nature and the great outdoors.

Shirley is a native Montanan with long-time ties to Camp Mak-A-Dream. Her first experience at camp was as a cabin counselor back in 1995—camp's first session ever! She came back again in 1996 and planned the camp's program in 1997 and served as office manager at camp for that entire summer. Since that time Shirley has filled a variety of roles both at camp and in the Foundation office. She is now on staff full time as both receptionist and volunteer coordinator. Shirley is a camping and outdoor enthusiast who shares her interests with her husband and two sons, all of whom have volunteered at camp as well.

TABLE OF CONTENTS

American Cancer Society	5
Andrea Levine Golf Tournament	4
Barley's Brewhouse & Grill	5
Board of Directors	7
Camp Schedule	6
Campers Who Enriched	
Our Lives	2
Camperships	4
Charitable Giving	5
Executive Director's Report	2
Founders' Message	3
Frequent Flyer Miles	5
Friends of Camp Mak-A-Dream,	
Michigan	3
Get Involved	5
Honorariums	6
Lawman Ride of Dreams	4
Mailbox	7
Montana Qualified Endowment	
Tax Credit	3
President's Message	6
Quick Draw Open House	
and Art Auction	1
Rent Gold Creek Lodge	2
Thank You	4
Welcome to Our Newest	
Staff Members	1
What's Happening at	
Camp Mak-A-Dream?	1
Wine Festival	6
Wish List	3
Women's Cancer Retreat	8



RENT GOLD CREEK LODGE Home of Camp Mak-A-Dream

RENTAL QUOTES:

"Thank you so much for sharing this very special place with us! It is gorgeous, wonderful and there's a special spirit here that I feel privileged to have been a part of. Thank you."

"I am so very happy that Camp Mak-A-Dream is such a beautiful place with very hard working and friendly staff. Thanks for your generosity. We loved it!"

"I went with the U of M Advocates on a retreat up at Camp Mak-A-Dream recently and had a great time! You have such a wonderful set-up and a beautiful view. Thank you so much for allowing us to spend a couple of days there!"

When you choose to hold your business, family or group retreat at Gold Creek Lodge, you'll be enjoying more than just fine facilities in a mountain landscape. You'll also be helping to support the programs of Camp Mak-A-Dream. This facility is available for rental groups of 10-120 people, for a day-long meeting or for a several-day retreat. So, make your next retreat one to remember.

Some of the things Gold Creek Lodge has to offer:

- * Fully accessible buildings
- * Main lodge with meeting rooms, recreation room & dining hall
- * Four cabins with common rooms & kitchenettes
- * Accessible, heated swimming pool & hot tub
- * Outdoor patio area with BBQ grills
- * Sleeping capacity of 90 people
- * Art Studio building
- * Health Care Center
- * Meeting & activity rooms
- * Smoke-free facility & grounds
- * Ropes course & archery range
- * Fine dining & variety of menu options
- * Competitive rates & excellent service

Medical Support:

This facility is equipped to provide medical care for groups that have unique medical needs. This service can be designed and arranged to fit a variety of needs. Please contact the Foundation office for additional information.

The Gold Creek Lodge facility is a great place to hold team-building workshops, meetings or private family gatherings. It is available for rent from September through mid-June with a few exceptions. Let us help you create a retreat to remember with our professional staff and programming options. Call our Foundation office for more information or to book your reservation at (406)549-5987.

Executive Director's Report

Our sixth summer of operation is near, and once again Camp Mak-A-Dream will be filled with children and young adults who are surviving cancer. They will bring with them their experiences, their problems, their desires, their sadness, but even more importantly, their spirit. The essence of that spirit is what they share with one another and take home with them, and is the reason Camp Mak-A-Dream continues to grow and be successful. The board of directors and staff of this foundation take the work we do at camp very seriously. It is a very fun place, but also at times a place where difficult and sad issues are the matters at hand. But it is always the spirit of our participants that takes us from day to day, camp to camp, and year to year.

I would like to thank all of you who help to make this camp a success.

Gregg Doerfler - Executive Director



Camp Mak-A-Dream is a non-profit 501 (c) (3) organization and follows all federal guidelines to maintain this status. Please feel free to contact the camp office if you desire more financial information.

Newsletter Coordinator:
Jennifer Benton

Layout, Production & Proofing:
Partners Creative:
Jason Pounds, Kerry Dewey,
Kathryn Goetske, Susan Ash

Contributing Photographers:
Many unknown volunteers

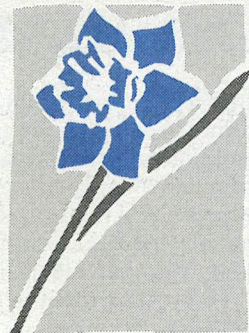
Contributing Writers:
Jennifer Benton

Printing:
Missoulain - Deb Larson

RSVP
Volunteer
Clearinghouse

Many thanks to the volunteers at RSVP who helped prepare this newsletter for mailing!

Montana Cancer Oncology Camp Foundation



In memory of the children and young adults who enriched our lives

Please join with us in honoring the lives of ten of our campers. We extend to their families our deepest sympathy and also appreciation for sharing them with us. While their lives were shortened due to cancer, they will continue to enrich our lives. The following children and young adults have passed away since the publication of our Spring 1999 *Dreamcatcher*.

Keona Abrams, age 22
Lithonia, Georgia
Died: August 1999

Weston Cartwright, age 16
Kalispell, Montana
Died: April 2000

Samuel Cooper, age 16
Ann Arbor, Michigan
Died: January 2000

Joslin Winkowitsch, age 20
Harris, Iowa
Died: September 1999

Mario Bethea, age 18
Erwin, North Carolina
Died: February 2000

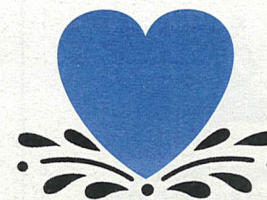
Jamie Confer, age 24
Nampa, Idaho
Died: January 2000

Alicia Greeley, age 21
Deer Park, Texas
Died: July 1999

Joseph Brooks, age 23
Norman Park, Georgia
Died: February 2000

Jeremy Cook, age 24
Rosemount, Minnesota
Died: September 1999

Michael Ruddis, age 12
Spokane, Washington
Died: September 1999



MONTANA QUALIFIED ENDOWMENT TAX CREDIT

Take advantage while there's still time!

This tax credit law was put into effect in Montana on January 1, 1998. It has helped many non-profit organizations in Montana grow their endowment funds, while giving a beneficial tax credit to the donors as well. The catch is, the law will only be in effect until December 31, 2001. Here are a few specifics about what qualifies for this type of tax credit and how you might benefit from donating to Camp Mak-A-Dream's endowment account.

- *The gift must be irrevocable and made to a permanent endowment fund.*
- *The credit is 50% of the value of the gift, up to a maximum of \$10,000.*
- *If made by an individual, the gift must be a "Planned Gift" (contact our office).*
- *If made by a partnership, corporation, LLC or estate, the gift may be made outright by any of these entities.*

A permanent endowment fund retains its principal and provides the earnings from those funds to be used in the current operations of the non-profit or for any designated purpose. Camp Mak-A-Dream is working to build an endowment; we encourage you to contact us on how you can help, and how the tax credit can help you!

For more information, please contact your accountant or call our Foundation office at (406) 549-5987.



A message from our Founders

No disease known to humans can match the heartache and suffering cancer inflicts on the loved ones of its victims.

Camp Mak-A-Dream provides a chance for kids with cancer to form new friendships and interact with other kids who also struggle with hair loss, the discouragement of sometimes being easily fatigued and the loss of friends who do not understand the adjustments it takes to live with cancer. Camp allows these children the opportunity to do new things, gain greater self-confidence and increase independence. Camp for these children is not a luxury. The courage, strength, self-acceptance, support and hope that come from this experience are not luxuries. They are essential if these children are to grow and live life to its fullest—no matter how long or short that life might be.

Helen Keller once said, "The best and most beautiful things in the world cannot be seen or even touched. They must be felt with the heart." By sharing your heart, you can improve the lives of many children.

We make a living by what we earn, but we make a life by what we do for others. People are not remembered for what they had; they are remembered for what they have given. Please make a charitable donation...not just because it will give you a tax deduction, but because you enjoy helping people, and it makes you feel good within yourself.

Please help us spread the word about Camp Mak-A-Dream and all it has to offer. We thank you for your support and wish you good health and a long, happy life.

Harry & Sylvia Granader - Founders

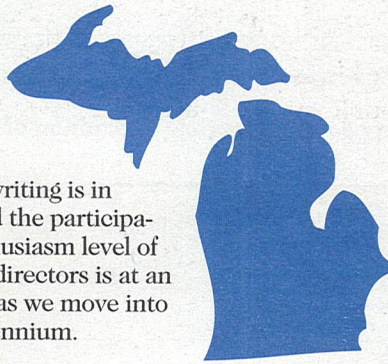
Michigan Chapter: Friends of Camp Mak-A-Dream

Greetings from Michigan! We had a spectacular year in 1999 with events, grant writing, several new directors on our board, and we exceeded our fund raising goals.

In 1999, we raised over \$210,000 while gifting Camp Mak-A-Dream in Montana \$100,000. This year we will hold our second annual "Cookies and Dreams" event which is our premier gourmet cookie tasting contest. We are also planning a yoga event called "Yoga in the Park" and are considering a golf outing as well.

The grant writing is in full swing and the participation and enthusiasm level of our board of directors is at an all time high as we move into the new millennium.

*Brian Granader - President, Board of Directors
Friends of Camp Mak-A-Dream*



2000 Wish List

Camp Mak-A-Dream is always in need of various items for summer camps. The following items are things we are looking for, broken down by category. If you have one or more of these items and would like to donate them to camp, please call us and tell us what you would like to donate. All donations are tax deductible.

Please call us at (406)549-5987 or e-mail us at camp@montana.com with your donation.

If you are mailing or delivering items to our Foundation office in Missoula, our NEW address is: Bldg. 32, Fort Missoula, Missoula, MT 59804. Smaller items may be sent to our post office box at: P.O. Box 1450, Missoula, MT 59806.

Equipment, Tools & Furniture:

1.5 hp air compressor (8+ gal. tank)
20" chainsaw (in working order)
5000 watt generator
6 & 12 volt battery charger
Assorted hand tools (call for details)
Cordless drill (Makita or DeWalt)
Iron "Montana style" floor lamps for cabins
Log splitter
Old fashioned popcorn cart
Portable CD / tape players for cabins
Snowcone machine

Kitchen & Dining Room:

(12) White ceramic creamer / sugar sets
(6 ea.) Cambro square, clear plastic, food storage containers (2-qt., 4-qt., 6-qt.)
(1) Double stack Blodgik convection oven
(12 ea.) Washable 96" square table linens, solid colors
(12 ea.) White linen tablecloths, 54" x 96"
(12 ea.) White linen tablecloths, 54" x 120"

Housekeeping:

(100) Twin fitted sheets (white or cream)
(2) Twin size rollaway beds

Decorations:

Glass salt & pepper shaker sets (dozen each)
New candles (pillars, tapers, votives)
Solid color paper napkins (asst. sizes & colors)
Solid color paper plates (asst. sizes & colors)

Camp Activities & Programs:

"Montana wildlife" stuffed animals (NEW, please)
Air horns
Balloons (various colors & sizes)
Beach balls
Board games
CDs (popular & classical music)
Costumes for dress-up
Fly-fishing rods & reels
Hand percussion instruments:
tambourines, maracas, bells, cymbals, etc.
Life vests (PFDs), child & young adult sizes
New balls
New or used parachutes (for group games)
Photography & art picture books

Medical Items:

Insect repellent
Sunscreen (SPF 30+)
Unopened boxes of fun Band-Aids

Little Things:

Individually wrapped candy items:
Life Savers
Gum
Mini candy bars
Hershey kisses
Mints

Items for campers' "goody-bags"

Toothpicks
Rubber bands
Pencils
Erasers
Tea bags

Other:

Airline tickets for campers

Thank You!

...to our volunteers

Non-profit organizations count on volunteers to survive. Camp Mak-A-Dream is no exception. Without the hundreds of people who offer and volunteer of their time, energy and resources, this program would not be the success that it is today. To date, Camp Mak-A-Dream has served more than 1,000 children and young adults with cancer, hosted several adult cancer retreats and put on professional conferences—all with the assistance of volunteers. So many people give of themselves and their time: during the summer at camp, speaking and presenting at conferences, during fund raising and community events, making quilts and pillows for camp, and every day, year around at the Foundation office in Missoula. Thank you, each and every one of you who has helped us make dreams come true!

...to contributing businesses

Community businesses of Montana and across the country continue to be generous and grant request after request, donating goods and services to camp as well as items for our annual fund raising auction. You make such a difference in providing an experience of a life time for these deserving children.

...to our donors

None of this could happen without funding and in-kind gifts from our many, many donors. For everyone who has ever given to Camp Mak-A-Dream, we thank you for your past support and hope you will continue to support this special program in the future.

...to our Board of Directors and Founders

These people are also volunteers who give of their time, resources and energy on a continuous basis—raising funds and setting policy and goals for the future. Thanks to all of our local, regional and honorary board members for their continued support.

...to the wonderful communities of Montana

So many people give in ways we cannot even begin to describe. Our undying gratitude to you for your generosity and open arms. Our campers and participants all feel welcome in Montana because of you!

...and last but not least to our campers' and young adults' families

Thank you for allowing your loved one(s) to attend the camps and conferences at Camp Mak-A-Dream in beautiful Western Montana. It is a pleasure to serve them all! We love to hear how everyone is doing, so please keep in touch.

Lawman 1000 "Ride of Dreams"

For the third year, Camp Mak-A-Dream is pleased to be part of the charity "Lawman 1000" motorcycle ride. This is an annual event comprised of numerous riders gathering pledges, donating their time and then riding 1000 long miles on their motorcycles in just two days. This year's ride will take place on June 24-25 beginning in three different Montana towns, (Helena, Missoula, Billings) plus Idaho Falls, with the mid-way point being Coeur d'Alene, Idaho, and the finish line in Butte.

If you have interest in riding or making a pledge, please contact the state director of the Lawman 1000, Bill Henne:

MONTANA LAWMAN 1000
35 WHISKEY GULCH RD.
WHITEHALL, MT 59759
(406) 949-KIDS (5437)



3RD ANNUAL ANDREA LEVINE FOUNDATION GOLF TOURNAMENT



Thanks to the efforts and generosity of one camper's family and their law firm (Katz, Ettin, Levine, Kurzweil, Weber & Scialabba), New Jersey will once again be the site of the 3rd Annual Andrea Levine Foundation Golf Tournament to benefit Camp Mak-A-Dream. The tournament is tentatively scheduled to take place on Monday, October 2 at the Deerwood Country Club in Westampton, NJ.

Help send a kid to camp - buy a Campership



Donor Name(s): _____
Address: _____ Phone #: _____
City/State/Zip: _____
I would like to purchase _____ Campership @\$500 _____ Campership, plus an engraved brick for \$525
Name(s) as you would like it to appear on the brick: (Maximum of 30 characters)

Amount enclosed \$ _____ Paid by: Cash _____ Check _____
Mastercard _____ Visa _____ American Express _____ Discover _____
Account # _____ Expires: _____
Signature: _____

Mail to: Camp Mak-A-Dream • P.O. Box 1450 • Missoula, MT 59806

Children's Oncology Camp Foundation is a 501(c)(3) non-profit corporation.
Contributions are tax deductible. Tax ID # 81-0472959

Spring 2000, Issue #12

CHARITABLE GIVING: Planned Gifts of Life Insurance

The giving of life insurance for charitable causes has been a major source of funding for many non-profit organizations. Universities and hospitals have thrived from large life insurance policies enhancing their endowment programs for many years.

The gift of life insurance is especially attractive to donors because of the unique exponential growth of the gift (a donor can pay a little to give a lot). Most people have some type of life insurance in effect. Such existing policies can be donated, as can new policies which name a charitable organization as the beneficiary. In some instances, the cost of the life insurance can even be a tax-deductible gift.

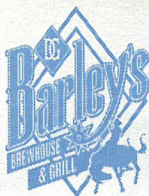
Please visit with your tax advisor or call Camp Mak-A-Dream for additional information on this special way of giving.

Brian Salonen,
Northwestern Mutual Life / Baird

Barley's Brewhouse & Grill Kalispell, Montana

Proprietors Terry and Judy Anderson of Barley's Brewhouse & Grill invite you to their newly remodeled, renamed restaurant. They have taken Camp Mak-A-Dream on as their primary charity, supporting camp in several ways throughout the year.

On Saturday, July 8, 2000, Barley's will host a charity golf tournament in Kalispell at the Village Greens Golf Course. Proceeds from the tournament will be donated to Camp Mak-A-Dream. If you are interested in playing in the tournament, please contact Jason at Barley's, (406) 756-2222.



American Cancer Society 2000 Schedule of Events

May	Skin Cancer Awareness Month
June 1	Cancer Survivors Day
July	Relay for Life (Missoula)
August	Relay for Life
September	Childhood Cancer Awareness Month
September	Prostate Cancer Awareness Week
October	Breast Cancer Awareness Month
November	Great American Smokeout

To receive information on any of these events or programs, please contact the American Cancer Society in Missoula at (406)542-2191 or toll free at 1-(877)488-7723.



DO YOU HAVE FREQUENT FLYER MILES?

Camp Mak-A-Dream would love to talk to you about accepting your unused frequent flyer miles to assist campers who are unable to afford transportation to camp. If you have 25,000 miles (or more) on Northwest, Delta or Alaska/Horizon airlines that you would like to contribute, we would love to hear from you.

Restrictions do apply. Please call us for details.

Please contact us by calling the Foundation office at (406)549-5987 or by e-mail at camp@montana.com.

GET INVOLVED!

- Attend a "clean up" day at camp to pull weeds, wash windows, plant flowers, etc.
- Be on our "Dream Team" to help clean, cook and assist at our adult retreats.
- Call our Foundation office with other fund raising ideas.
- Donate an item for our annual charity auction.
- Donate frequent flyer miles.
- Invite us to speak at your community / civic organization's meeting to talk about camp.
- Make a donation in memory of a loved one, or to honor a special occasion.
- Rent our beautiful facility for a meeting, family reunion or large gathering.
- Send us items from our "Wish List".
- Sponsor a child or young adult to attend camp by making a "Campership" donation.
- Take on camp as a community service or Eagle project.
- Take part in a local event in your own community to benefit camp.
- Volunteer your time and talents at camp or our Missoula Foundation office.
- Write to us with a story of how Camp Mak-A-Dream has helped someone you know.
- Be an advocate in your community for Camp Mak-A-Dream... spread the word to others!



For more information, call (406) 549-5987.



CALL US: (406) 549-5987

E-MAIL US: camp@montana.com

VISIT OUR WEB SITE: www.campdream.org



17TH ANNUAL WESTERN MONTANA WINE FESTIVAL

This year's wine festival (and auction) was another successful event for Camp Mak-A-Dream on February 26, 2000. We greatly appreciate the support and sponsorship of this event by Earl's Distributing and the DoubleTree Hotel of Missoula. Hundreds of people gathered at the DoubleTree to sample fine wines, taste some Missoula cuisine and bid in live and silent auctions to benefit Camp Mak-A-Dream. In all, the evening brought in more than \$15,000.

Our thanks to everyone who attended the evening, to everyone at Earl's Distributing for organizing the event, and especially to the fine businesses and individuals who donated items for the auction and raffle prizes. We could not have done it without you!



2000 SCHEDULE OF EVENTS

Winter / Spring

Young Adult Conference January 6-13
Conference for young adults with cancer, ages 18-25

Summer

Diabetes Teen Camp June 29-July 2

Kids Camp July 7-14
Camp for children with cancer, ages 6-17

Young Adult Conference July 17-24
Conference for young adults with cancer, ages 18-25

Siblings Camp July 27-August 2
Camp for siblings of cancer patients, ages 6-17

Young Adult Conference August 6-13
Conference for young adults with cancer, ages 18-25

Kids Camp August 17-24
Camp for children with cancer, ages 6-17

Fall

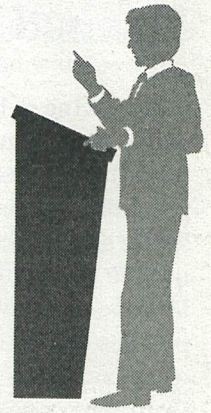
4th Annual Ovarian Cancer Retreat September 7-11
Retreat for women with ovarian cancer, ages 18+

5th Annual Women's Cancer Retreat October 12-15
Retreat for women with cancer, ages 18+

We are always looking for volunteers to assist us in various capacities at these events. If you are interested in receiving additional information on volunteering, or know of someone we should invite to any of the above programs, please call us at (406)549-5987.

President's Message

The year 2000 is shaping up to be Camp Mak-A-Dream's best year ever. Thanks to a wonderful staff and great friends like you, we believe we will provide a positive camp experience for more kids and young adults than ever before.



Our mission, to provide a positive camp experience to young people with cancer and their siblings, is being provided at a level that the camp's founders and visionaries of seven or eight years ago could only dream about (and now can be quite proud of). With your help that dream has become a reality.

Oh, and speaking of help, we could use it in any number of forms: time, talent, cash or in-kind contributions, to name a few. Your past generosity has been fantastic, and we need it to continue.

If your summer travel plans take you along Interstate 90 near Gold Creek, I encourage you to stop and see camp while it is in session (July 7-August 24). Give us a call at the camp office in Missoula (406-549-5987) prior to your arrival, so we can have someone lined up to give you "The Tour."

Thanks again for your continued support. Have a great summer!

Tom Copley - President, Board of Directors



A WONDERFUL WAY TO REMEMBER THOSE YOU LOVE

Help make a dream come true for a child or young adult with cancer. If you or someone you know would like to make a generous gift in a loved one's name, just fill this out and forward it along with your gift to the Camp Mak-A-Dream office at P.O. Box 1450, Missoula, MT 59806. All gifts will be acknowledged with a personalized keepsake card.

This gift is made in _____ honor _____ memory of _____

Given by _____

Send the card to:

Name: _____

Address: _____

City / State / Zip: _____

Credit card contributions may be made by calling (406) 549-5987, or by fax at (406) 549-5933. Spring 2000, Issue #12



THE MAILBOX

We often receive wonderful letters from campers, parents, and adult participants, and we'd like to share a couple of them with you.

"Dear Harry, Sylvia and all of Camp Mak-A-Dream, You have helped me find my inner strength to overcome many obstacles. Your helping hands touched me when it seemed as if no one else could... I love you all and know you will continue to touch the lives of many."

Alok, Young Adult Conference participant

"My name is Monica and I was a volunteer during the Siblings Camp last summer. It was one of the best weeks of my life! In fact, it is partly responsible for my changing my career...I am now going to be a teacher. Although I was only there for a week, I met some of the most amazing people...and still talk to many of them. Thank you, Camp Mak-A-Dream, for such a wonderful opportunity to give back and still receive. I hope I can join you again next year..."

Monica, Volunteer

"I have something that is important to me, and I would like to share it with you. Yes, this is a form letter and I am sending it to many people. The purpose of this letter is to share something that has touched my heart and has made a huge impact on my life..."

As a young adult, conqueror of cancer and the only sibling of a teenage cancer victim, I reach out to you in this succinct telling of my cancer and cancer camp experience at Camp Mak-A-Dream.

In the same week in January 1998, shortly after I finished my first semester of college, my only sibling, Kelly, and I were both diagnosed with different, unrelated rare forms of cancer, which predominantly occur in people much later in their lives. Our friends, relatives, community and churches reached out in so many ways and did so much for our family.

Kelly, who was then 15, and I, 19, went through treatment at the Children's Hospital of Philadelphia. I went through four cycles of chemotherapy and 38 treatments of radiation. Kelly received a bone marrow transplant and despite my being a perfect HLA match, I was not able to be her donor due to my own illness. She received marrow from a matched unrelated donor. Because of problems caused by her transplant, she contracted and succumbed to pneumonia early in the morning of July 15, 1998, just two days after I finished my treatment and gained my remission. I appear to have beaten my cancer, and with a few side effects of my treatment aside, have been doing very well.

This past Christmas, the greatest gift I received was not anything I wanted nor would have ever thought could touch me as it did. It was a small present that was big because it re-framed how I will think of presents for the rest of my life. I began to think of how so many people reach out to help others and I have never done much of anything, besides a warm smile and a kind word, to help anyone. It made me want to reach out to help others.

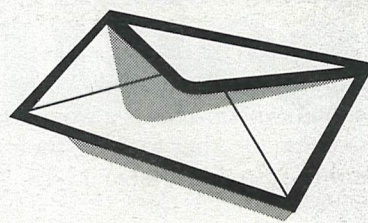
This is why I decided to write this letter to you. One of the greatest experiences of my life was Camp Mak-A-Dream. It was there that I was able to connect with my true peers and talk to so many who also had a history of cancer in their lives. It was through them that I was able to see cancer not as one of the worst things that ever happened to me, but as one of the best. Yes, cancer is one of the most powerful things to have ever happened to me. It sounds strange, I know, but I never would have reached the place where I could see things the way I do now, without my experience at camp. It was by meeting people who have been through what I have been through and were much stronger and more optimistic than myself, that enabled me to see life as the precious thing that I see it as today. I would like to help as many childhood cancer patients and survivors as possible, to receive the gift that I received at Camp Mak-A-Dream. I am offering you the chance to help them, too.

These people had been through cancer, like myself, yet seemed to have something I wasn't in touch with. It was not the same from person to person, but there was a little sparkle in their eyes, a little skip in their gait. I saw inside them more spiritual strength and optimism than I felt inside myself. Through looking at myself for what I saw in them, I caught the slightest glimmer of hope. When I realized it was there, it started to grow...that glimmer grew to a shine. Meeting and knowing them enabled me to see life in a different perspective...a rare and precious gift. This letter that you are reading is a ray of light shining from the bonfire of my soul. I would like to use this light to help as many childhood cancer patients as possible, and am offering you the chance to help them, too.

Maybe when you are allocating your money for donations to various charities, you will think of this and give to this most noble of charities. In turn, knowing what a life-altering experience you have given to someone can touch your heart.

Again, thank you for your valuable time..."

*Patrick Bolish, age 21
Young Adult Conference participant*



CHILDREN'S ONCOLOGY CAMP FOUNDATION FULL & PART-TIME STAFF

Gregg Doerfler
Executive Director
Jennifer Benton
Executive Assistant /
Fundraising Coordinator
Kristie Scheel
Asst. Camp Director / Program
Toby Quinn
Asst. Camp Director / Residential
Danny Riddle
Food Service / Rental Coordinator
Roger Perrier
Facility Manager
Bonnie Karrer
Bookkeeper
Shirley Hummer
Receptionist / Volunteer
Coordinator
Carole Hollenback
Campus Coordinator

BOARD OF DIRECTORS OFFICERS

Tom Copley
President
Ned Becker
Vice President
Dan Carlino
Treasurer
Brian Salonen
Secretary
Paulette Fisher
Past President
Don Diegel
Member at Large
Jan Krystkowiak
Member at Large

MEDICAL DIRECTOR

Dr. Tim Carte

LOCAL BOARD

Shirley Beck
Dave Cotner
Dr. Henry Gary
Brian Granader
Sally Francis Kehayes
Caryl Klein
Kent Kleinkopf
Gary Koprivica
Brenda Lange
Pete Lawrenson
William Liberson
Melanie Nedrud
Scott Seifert
Dr. Bob Shields
Kim Visser
Twila Wolfe
Al Zepeda

REGIONAL BOARD

Lowell Bartels
John "Harp" Cote
Max Ericson
Bob Gauthier
Phil Grimm
Dick Hughes
Debbie Jackson
Mark McDonald
Russ Ritter
Mark Staples

HONORARY BOARD

Harry & Sylvia Granader
Danny Granader
Susan O'Connor
Phyllis Washington
Sophie Craighead

WE WOULD LOVE TO HEAR FROM YOU, TOO. PLEASE WRITE SOON!

Fifth Annual Women's Cancer Retreat

Each October for the last four years, Camp Mak-A-Dream has offered a retreat for adult women, ages 18 and older, who have or have had cancer. This is a wonderful opportunity for women from across Montana and the Pacific Northwest to come together to share their experiences and stories, and learn from one another. This year will be our fifth annual retreat, October 12-15, 2000, and we anticipate filling it to capacity with 70 women.

If you, or someone you know, would like to be part of this rejuvenating retreat, please complete the form below and return it to us as soon as possible. The registration fee of \$150 covers all lodging, meals and retreat activities. Transportation costs are the responsibility of each participant.

Start caring for yourself...and let us take care of you for four special days at Camp Mak-A-Dream.



Ghost Town Tour

Women's Cancer Retreat • October 12-15, 2000 Registration form

Name: _____ Address: _____
City: _____ State: _____ Zip: _____
Day Phone: () _____ Evening Phone: () _____
E-Mail Address: _____

Do you require vegetarian meals for this retreat? Yes No

Please include the registration fee of \$150 and return this form to:

Women's Cancer Retreat, c/o Camp Mak-A-Dream, P.O. Box 1450, Missoula, MT 59806. We accept cash, checks and credit cards (Visa, MC, American Express, Discover).

Credit Card payment: Acct. # _____ Exp. Date: _____
Name on card: _____ Signature: _____

We would be happy to invite anyone else you feel would benefit from attending this retreat.

Name: _____ Address: _____
City: _____ State: _____ Zip: _____
Day Phone: () _____ Evening Phone: () _____
E-Mail Address: _____

8



Children's Oncology Camp Foundation
P.O. Box 1450,
Missoula, MT 59806-1450

NON-PROFIT
U.S. Postage
PAID
Permit #368
Missoula, MT