

# CAMP MAK-A- DREAM

## ★ OUR MISSION ★

The mission of the Children's Oncology Camp Foundation is to provide an appropriately supervised, cost-free camp (Camp Mak-A-Dream) for children and young adults with cancer.

The camp will be available on a priority basis to children with cancer, young adults with cancer and adults and families dealing with cancer.

In addition to these groups Camp Mak-A-Dream desires to accommodate, as much as possible, groups of children with other medical needs interested in a camp experience.

### CAMP MAK-A-DREAM 1998 SCHEDULE

#### KIDS CAMP (AGES 6-16)

July 6-13

#### KIDS CAMP (AGES 6-16)

July 16-23

#### YOUNG ADULT CONFERENCE (AGES 17-23)

July 26-August 2

#### YOUNG ADULT CONFERENCE (AGES 17-23)

August 5-12

#### SIBLINGS CAMP (AGES 6-16)

August 15-21



HELP MAKE  
DREAMS COME TRUE.  
CALL (406) 549-5987

# The Dreamcatcher

GOLD CREEK, MONTANA

• A Publication of the Children's Oncology Camp Foundation •

SPRING 1998 - ISSUE # 7

## Images of Summer

by Karen McNenny, Asst. Camp Dir.

Sun-touched noses, an art studio bursting with creativity, marshmallows hovering above an open camp fire, shouts of courage from atop the 30 foot high ropes-course, laughter bubbling up from the swimming pool, smiles everywhere and friendships rooted in a common bond, summer 1997 was filled to the brim with extraordinary experiences and the greatest number of participants Camp Mak-A-Dream has ever served.

Camp Mak-A-Dream hosted 191 participants from across the United States and Canada. Of the five sessions, two were for children ages 6-16 with cancer, two were for young adults ages 17-23 with cancer and one session welcomed our campers' siblings ages 6-16. Including the 19 participants from our first annual Winter Young Adult Conference, Camp Mak-A-Dream served 210 children and young adults in 1997. This is an increase of 89 participants over 1996.

There were many fun activities throughout the summer, including: horseback riding, camp-outs, archery, swimming, drum circles, challenge high ropes-course and climbing wall, river rafting, fly fishing and performances by Native American dancers. A welcome addition to the list of activities was our weekly trip to the historical town of Philipsburg.

Upon arriving, each participant crossed the bridge of dreams, bringing with them their own unique set of needs and experiences. However, within the week it became evident



that the common bond they share with each other is one which must be lived to be understood. As one of our sibling participants explained, "To be with people who have shared your feelings makes you feel less alone." One 10 year-old girl found Camp Mak-A-Dream to be a place where she could set her cancer aside and reconnect with the fun of being a child, "I didn't even write a letter home because I was having so much fun. The pool I love more than anything."

The growing interest in our Young Adult Conference is encouraging as we recognize this is an age group which has lacked sufficient and appropriate support in the past.

"To me, Camp Mak-A-Dream has given me the support that I have always needed," said one participant. "One of the hardest parts for me is the transformation from being a teenager growing into an adult. That is why the YAC program has helped me so much."

As one reflects on 1997 it is easy to be filled with the warm-fuzzy feeling which has become commonplace at Camp Mak-A-Dream. We anticipate that 1998 will bring even more smiles and good times. This year began with 30 participants at our second annual Winter Young Adult Conference. Soon our special guests will arrive at camp once again, bringing with them the warmth and strength which makes Camp Mak-A-Dream more than just a pretty place in Montana.

## Blood products and cancer therapy

by Stuart Kaplan, M.D.

Many children battling cancer have to endure blood transfusions during their therapy. Although many people think that the need for blood is due to the cancer, it is actually the cancer therapy that is to blame.

The primary abnormality in cancer is a cell that divides abnormally. Although almost any cell in the human body divides, there is a very tight control on the way it divides, and each kind of cell divides at a different rate. Cancerous cells divide uncontrollably and chaotically.

A logical strategy in cancer therapy, therefore, is to destroy cells while they divide. This is the principle in chemotherapy which targets cells while they are dividing; cells that divide quickly are killed, while cells that divide more slowly are spared. The problem with this scenario is that chemotherapy is not able to tell which cells are cancerous and which cells are not.

The body has several normal kinds of cells that divide quickly. These include hair cells (why hair often falls out with chemotherapy), cells in the stomach and GI tract (why mouth sores and nausea often occur), and blood cells.

Red blood cells are required to carry oxygen throughout the body. When red blood cell counts are low, patients often feel tired and lack energy. Platelets are the clotting factors in blood, and when platelet counts are low, patients often bruise

easily and have bleeding problems such as nosebleeds. Both platelets and red blood cells can be replaced by transfusions, and they work almost as well in the recipient as they work in the donor.

White blood cells are the infection fighters in the body. When white blood counts are low, patients are much more likely to acquire serious infections than when counts are normal. White blood cells cannot be transfused for two reasons. First, they divide so quickly that they do not survive long enough to be removed from the donor, stored, given to the recipient, and used. Second, white blood cells do not function nearly as well in a recipient as they do in the donor. Medications have recently been developed, however, that help the body produce new white cells more quickly, and to promote rapid maturation of white cells, to minimize the amount of time that patients have low white blood cell counts.

The future holds promise for fewer and fewer blood transfusions to cancer patients. Products have already been developed to help platelets mature more rapidly, and these are currently being tried. There has been a product to promote red blood cell maturation for quite awhile, but at this point, it takes a bit too long to be useful. Work is still being done in this field. Finally, there is research underway looking for ways to target cancer cells specifically, thus avoiding completely many of the side effects of cancer chemotherapy.

**A FEW WAYS YOU CAN HELP KIDS WITH CANCER.**

Camperships	5
Facility Rental	6
Honorariums	7
Volunteers	6
Summer Staff	3
Memorials	7
Capital Campaign	5

**TABLE OF CONTENTS**

1998 Summer Schedule	1
Board of Directors	7
Executive Report	2
Founder's Message	3
Honorarium Listing	7
The Mailbox	8
Memorial Listing	7
President's Message	2
Friends of CMD, Michigan	8
1998 Schedule	6
1998 Wish List	3

**SPECIAL ARTICLES**

Images of Summer - Our year in review	1
Blood Products and Cancer Therapy	1
The children who enriched our lives	2
Campers and participants - Get ready for summer	3
Special Thanks	4
Ride of Dreams/Lawman	4
HOOPFEST	4
CMD on Mount McKinley	5
Winefest 1998	6

**Send us an E-Mail**  
camp@montana.com

**Visit Our Web Site**  
www.campdream.org

Camp Mak-A-Dream is a non-profit 501 (c) (3) organization and follows all federal guidelines to maintain this status. Please feel free to contact the camp office if you desire more financial information.

Newsletter Coordinator:  
Jennifer Benton

Layout & Production:  
Ash Marketing Communications:  
Susan Ash, Linda Osler, Kerry Dewey

Contributing Photographers:  
Many unknown volunteers.

Contributing Writers:  
Jennifer Benton, Karen McNenny  
Stuart Kaplan, MD

Production & Printing:  
The Missoulian - Deb Larson,  
Joe Weston

**RSVP** Many thanks to the volunteers at RSVP who helped prepare this newsletter for mailing!  
**Volunteer Clearinghouse**

## President's Message



When I was young, spring signaled the excitement of the coming season's activities. For me, it was the beginning of life in various forms. I still look forward to spring and summer, but I also realize that there is nothing more important than this day, no matter what time of year it is. At Camp Mak-A-Dream, the office is buzzing with activity every day in preparation for rental activities, retreats, conferences and summer camp programs for children.

As you read through this newsletter, you will see last year's successes, as well as much that is yet to come. In addition to our present experienced staff, Dr. Stuart Kaplan (formerly a volunteer counselor and doctor at camp the last two summers) comes to us from St. Jude Children's Research Hospital in Tennessee as our Co-Camp Director and Camp Physician. We are delighted to have Stu on board.

Camp Mak-A-Dream has written some very important chapters about cancer. At camp, kids get a second chance at the childhood they thought they had lost. Each camp creates a safe, supportive environment where young people and adults can talk, listen, share and learn. Our hope is that by the time they leave they'll be able to face their challenges, armed with new-found knowledge and supported by new-found friends.

Continued success and growth is vital to the future of Camp Mak-A-Dream. As we celebrate our fourth season, we invite you to participate and make this day more important than any other.

*Paulette Fisher - President, Board of Directors  
Children's Oncology Camp Foundation*

## Executive Director's Report



In this past year, two things about Camp Mak-A-Dream stand out for me. The first is the strength and wisdom of the children and young adults who attend the sessions. When at camp, it does not take long see how special these kids are and what they have to contribute which makes Camp Mak-A-Dream a success.

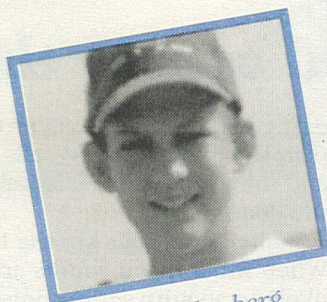
The second is the kindness of all the people and companies that donate time, money and needed items. It is truly amazing how many people want to be involved in camp, and without them Camp Mak-A-Dream would not have survived. Thank you, everyone.

I have no doubt that the upcoming summer will be another great success, due not only to both things I mentioned, but also to the incredible staff that works tirelessly so that everyone involved with camp, one way or the other, can be assured that it will be a success. Thank you to all.

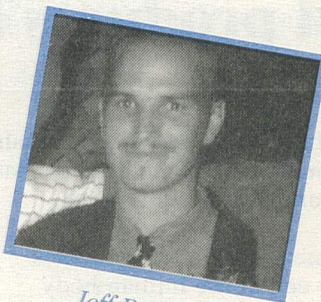
*Gregg Doerfler - Executive Director*

## In memory of the children and young adults who enriched our lives.

Please join with us in honoring the lives of eight of our campers. We extend to their families our deepest sympathy and also appreciation for sharing them with us. While their lives were shortened due to cancer, they will continue to enrich our lives. The following children and young adults have passed away since the publication of our Spring 1997 Dreamcatcher.



*Joel Ankerberg  
Michigan  
Age 14*



*Jeff Benner  
Pennsylvania  
Age 21*



*John Eisman  
Pennsylvania  
Age 13*



*Kate Heinrich  
Michigan  
Age 14*



*Brittany Keller  
Montana  
Age 11*



*Kimberly Mayne  
Michigan  
Age 11*



*Robin Maxie  
Texas  
Age 17*



*Michelle Sellards  
Texas  
Age 15*

## A message from our Founders

Many of us, in our lives, become somewhat cynical about the world- given we fight daily to earn a living and raise families. The world, at times, seems an insensitive place. Well, cynicism may have its place, but those who feel frustrated have not been exposed to Camp Mak-A-Dream and all that it implies.

We cannot even begin to describe the rewards we have experienced as a result of our association with the Camp. First, of course, is experiencing the joy of the children who have had the opportunity to attend the camp. We never tire of reading and re-reading their letters of gratitude. Second, is the relationship we have established with the professionals who make sure the Camp operates properly. We have the best in the business and are grateful for all their contributions. Third, we are thankful for the hundreds of volunteers- the Board of Directors, medical staff, counselors and many others who have given of themselves so unselfishly. To say we are grateful is an understatement. Finally, it has been so exciting to see the Camp grow from 45 campers in 1995, to last year when 210 attended the Camp. That bodes well for the future and we look forward to the years ahead with much anticipation.

Given our experiences, when friends and acquaintances complain about the few rewards in their lives, we simply smile and suggest that, in some manner, they might want to get involved with Camp Mak-A-Dream. We always guarantee that it will bring new meaning into their lives. It has to ours.

Harry & Sylvia Granader - Founders

## Campers and participants... Plot your path for the summer. Call for an application today!

Believe it or not it's almost that time of year again. We have been so busy at the camp office getting everything ready for a terrific, fun-filled season. Again this year we will have five summer sessions to meet the needs of a variety of participants. Two sessions are for children between the ages of 6 and 16 who have or have had cancer. Two sessions will be devoted to our Young Adult Conference, an experience that is both educational and recreational for participants between the ages of 17 and 23 who have or have had cancer. Finally, our highly successful siblings' camp for brothers and sisters of cancer patients, will wrap up the summer season. See the schedule on pages one and six for specific dates.



For kids 6-16 who have or recently had cancer, there is a fun-filled, action-packed week of activities ahead. You can look forward to swimming, horseback riding, a camp out, making amazing works of art, and hanging out by the camp fire. The week will go by so fast, you'll wonder where the time went.

The Young Adult Conference (YAC) will have, as always, a good balance of educational opportunities, including keynote speakers and workshops, as well as recreational activities such as a raft trip, minor league baseball game, and the opportunity to perform in a historic opera house in Philipsburg.

Siblings can look forward to a week of exciting activities. It is a chance to be around other kids who are growing up with a family member with cancer and to share experiences. The emphasis, though, is on a fun filled week when they are the center of attention.

Applications need to be completed and returned as soon as possible. Our medical committee is selecting this year's campers. We strive for a careful balance of children and young adults in various stages of cancer therapy, including some who have completed their therapy. Any application that arrives after the medical committee meets will be processed on a first-come, first-serve basis. So call our office soon if you know someone who would benefit from a week at Camp Mak-A-Dream: (406) 549-5987.



## Summer volunteers needed



Each summer Camp Mak-A-Dream utilizes over 100 volunteers for five different week-long sessions. We still have a limited number of positions available, so if you are interested in helping us out at camp, give us a call at our foundation office in Missoula. Space is very limited, so please contact us as soon as possible for an application. Volunteering at camp requires a nine day commitment and a multiple step application process. Please call (406) 549-5987 for more information.

## 1998 Wish List

We ask that any items on this list be provided in good condition & in working order and that you please call and tell us what you would like to donate. Our foundation office phone number is (406)549-5987.

### Equipment:

- 35mm cameras
- TV / VCR one piece unit
- Overhead projector
- Remote control slide projector
- 15-passenger van
- IBM/compatible (486 or newer) computer
- Copy machine in good condition
- Video camera (VHS)
- Old fashioned popcorn cart
- Foosball table
- 12' x 14' Log Structure

### Sporting goods:

- Tennis racquets (in good condition)
- Spectator bleachers
- Snow shoes
- (3) CD boom-box style stereos
- Binoculars

### Kitchen items:

- Food processor
- 5-qt. Kitchen Aid Mixer
- Kitchen Aid hand mixer
- 1-doz. bundt cake pans
- 1-doz. angel food cake pans
- 1-doz. metal bread loaf pans
- Assorted glass salt & pepper shakers
- White ceramic creamer/sugar sets

### Decorative items:

- Dried floral table center pieces
- New candles: taper, pillar & votives
- Candle holders: glass or ceramic
- Assorted glass rose-bud vases
- Handmade table decorations (call office for details)

### Costume accessories:

- Bandannas kerchiefs
- Cowboy hats
- Vintage clothing (cleaned), jewelry, hats, gloves, shoes

### Facility & grounds items:

- Hand gardening tools
- Chainsaw in working order

### Little things:

- Goody bag stuff: gum, LifeSavers, mini star erasers
- Individually wrapped candy: mini-Snickers, mini Butterfingers, Hershey Hugs & Kisses, Microwave popcorn

### Medical items:

- Sunscreen (SPF 30+)
- Insect repellent
- Lip Balm
- Band Aids
- Alcohol wipes
- Use of portable pulse oximeter & IV pump

### Stringed musical instruments:

- Guitar, banjo, mandolin, etc.

### Cabin & housekeeping items:

- Large floor pillows (30" square, solid colors, washable)
- (100) standard size, fiber-filled pillows

\* Donated items can be mailed or delivered to our foundation office at: 3700 S. Russell Street, Bldg. B, Suite 101 in Missoula, MT 59801.

# Thank You!

## *...to our volunteers*

Non-profit organizations count on volunteers to survive. Camp Mak-A-Dream is no exception. Without the hundreds of people who offer and volunteer of their time, energy and resources, this program would not be the success that it is today. To date, Camp Mak-A-Dream has served more than 400 children and young adults with cancer, hosted several adult cancer retreats and put on professional conferences- all with the assistance of volunteers. So many people give of themselves and their time during the summer at camp, speaking and presenting at conferences, during fund raising and community events, making quilts and pillows for camp and every day all year around at the foundation office in Missoula. Thank you to each and everyone of you who have helped us make dreams come true!

## *...to contributing businesses*

Community businesses of Montana and across the country continue to be generous and grant request after request, donating goods and services to camp as well as items for our annual fund raising auction. You make such a difference in providing an experience of a life-time for these deserving children.

## *...to our donors*

None of this could happen without funding and in-kind gifts from our many, many donors. For everyone who has ever given to Camp Mak-A-Dream, we thank you for your past support and hope you will continue to support this special program in the future.

## *...to our Board of Directors and Founders*

These people are also volunteers who give of their time, resources and energy on a continuous basis- raising funds and setting policy and goals for the future. Thanks to all of our local, regional and honorary board members for their continued support.

## *...to the wonderful communities of Montana*

So many people give in ways we cannot even begin to describe. Our undying gratitude to you for your generosity and open-arms. Our campers and participants all feel welcome in Montana because of you!

## *.. and last but not least to our campers' and young adults' families*

Thank you for allowing your loved one(s) to attend the camps and conferences at Camp Mak-A-Dream in beautiful Western Montana. It is a pleasure to serve them all! We love to hear how everyone is doing, so please keep in touch.

## **Lawman 1000 "Ride of Dreams"**

In 1998 Camp Mak-A-Dream has joined with the Lawman 1000 for the 'Ride of Dreams'. Since 1990 the Lawman has raised money totaling \$575,000 in Montana. The purpose of the Lawman 1000 is to team law enforcement officers with civilians to "Ride On The Side Of The Law" for a just cause. The Children's Oncology Camp Foundation is fortunate and excited that the Lawman is riding for Camp Mak-A-Dream. The concept is that motorcycle riders collect pledges for a 1000 mile ride. On June 27 between 200 - 300 riders will depart from Missoula, Great Falls and Butte and ride to Cody, WY. The next day they will ride, as a group, to Butte, ending the 1998 Lawman 1000.

With the dedication, enthusiasm and passion the Lawman riders have shown in the past, we are sure this year's ride will be another great success.

If you have interest in riding or pledging please call or write to:

**MONTANA LAWMAN 1000**  
P.O. BOX 4154  
BUTTE, MT 59701  
406-949-KIDS (5437)  
406-494-1988



## **Flathead HOOPFEST - July 24-26th To benefit Camp Mak-A-Dream**

For the second year, Camp Mak-A-Dream is proud to be part of the Krystkowiak Flathead HOOPFEST. This is the sixth year and the organizers, Larry and Jan Krystkowiak, are expecting 350 to 400 teams. The event will bring approximately 3500 people to Polson for two days of basketball action. There will also be 3-point, free throw shooting and slam dunk contests.

Cost is \$80-\$100 per team. The event will be July 24-26. Registrations received after July 15th will be subject to a \$20 additional charge.

With 30 courts, a good share of main street and several side streets will be occupied.

Joining in the fun this year will be celebrity guests Howie Long, Frank Brickowski, John Crotty and others.

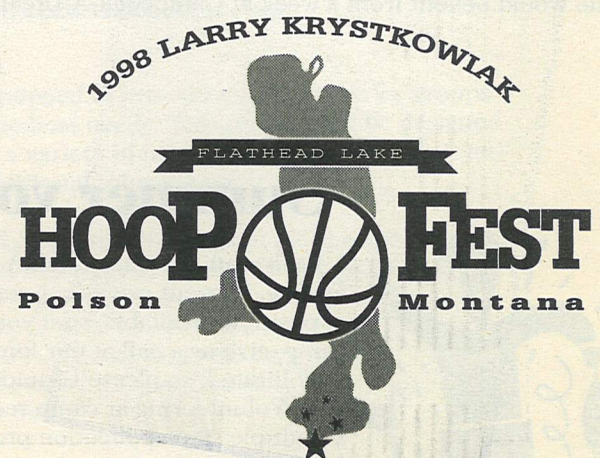
The proceeds of this event will benefit Camp Mak-A-Dream, Big Brothers/Big Sisters and Polson Area Projects.

Camp Mak-A-Dream is looking for volunteers to help at this event.

If you are interested, please call our foundation office at (406) 549-5987.

For further information please contact the Krystkowiaks at:

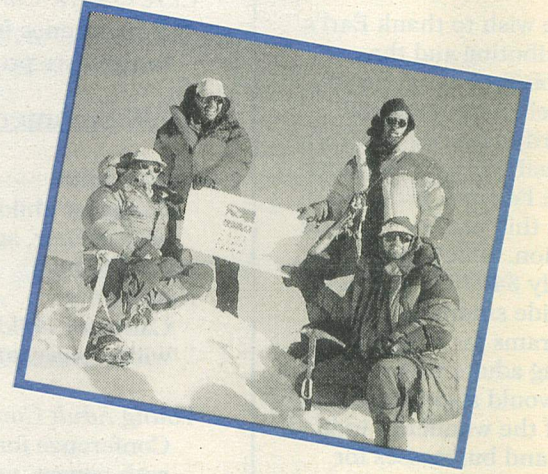
E-mail: [hoopfest@nwlinc.com](mailto:hoopfest@nwlinc.com)  
Fax: (406)887-2880  
Mail: 812 N. Finley Point,  
Polson, MT 59860



# Thank You!

## Camp Mak-A-Dream on Mount McKinley

At approximately 10:00 pm on June 25, 1997, Jon Mapes, Melissa McManus, Walter Murch, Cam Pollock, Tamsin Sarich, Bob Summer and Tom Summer successfully reached the summit of Denali. This team of climbers, who are all cancer survivors themselves, spent two weeks ascending before reaching the summit of Mount McKinley which is 20,320 feet above sea level. This group organized as Cancer Survivors on McKinley with the intent and goal of raising \$100,000 to send children with cancer to cancer camps across the United States. Each team member was asked to raise \$10,000 through pledges and donations, plus every climber covered his/her own expenses of the climb, including gear and guide fees. Because of their determination and triumphant success, they were able to raise \$8,000 for Camp Mak-A-Dream! Our thanks to each member of the team, all of the volunteers who helped with the climb and to the event organizers. You have helped many dreams come true here in Montana at Camp Mak-A-Dream.



## It takes people like you to turn dreams into reality

It is estimated that over 10,000 children and young adults will be diagnosed each year as having some form of cancer. Because of their special medical needs, most are unable to attend traditional summer camp programs. The benefits of these camping programs, however, can be even more valuable for an individual who has a life-threatening illness.

Programs that encourage self-confidence, self-esteem and the development of friendships support resilience and coping: the ability to bounce back from the adversities of illness. Similarly, adults with cancer are often in need of the opportunity of the camp or retreat experience that aids physical and mental recovery.

The Children's Oncology Camp Foundation is now in Phase II of our Capital Campaign - not only for bricks and mortar but also for endowment.

COCF is proud of the accomplishments of Phase I. Our 3.5 million dollar Capital Campaign enabled Camp Mak-A-Dream to become a reality. Phase II, also for \$3,500,000, will enable us to enlarge our campus. It will help us feel secure as income generated from the endowment will support facility maintenance, camperships and enhanced and expanded programs.

For more information, call Gregg Doerfler, Executive Director at (406) 549-5987.

## Help send a kid to camp - buy a Campership

Camp Mak-A-Dream has a mission to provide an appropriately supervised, cost-free camp for children and young adults with cancer. This experience is provided free of charge to all participants and is funded entirely through private and corporate contributions. You can sponsor a child for a week at camp with a \$500 donation. Please help make a dream come true: Camp Mak-A-Dream, P.O. Box 1450, Missoula, MT 59806 or call our foundation office at (406)549-5987.



Name \_\_\_\_\_ Phone \_\_\_\_\_

Address \_\_\_\_\_

City/State/Zip \_\_\_\_\_

Amount Enclosed \$ \_\_\_\_\_

In addition I would like to pledge \$ \_\_\_\_\_ for \_\_\_\_\_ Years

Annually \_\_\_\_\_ Quarterly \_\_\_\_\_ Monthly \_\_\_\_\_

Spring 1998, Issue #7



### WINEFEST 1998

We wish to thank Earl's Distributing and the DoubleTree Hotel for all of their hard work and contributions for the 16th Annual Western Montana Wine Festival. Proceeds from this year's event and auction, which totaled nearly \$40,000, will help provide summer camp programs for children and young adults with cancer. We would also like to thank all of the wonderful individuals and businesses for their donations to this year's event...your efforts and generosity are greatly appreciated and make this event a success!



### VOLUNTEERS NEEDED

Volunteers are a vital part of Camp Mak-A-Dream. There are several opportunities to get involved including: volunteering during our weekly camp sessions in the summer, working in the foundation office in Missoula (year round), being part of our "Dream Team" for foundation conferences and helping out at community and special events. Flexible days and hours are available. If you would like to help out, call Shirley Hummer, Volunteer Coordinator, for more information at our Missoula office (406)549-5987.

## 1998 Schedule of Events

### 1998 Winter Program

*Winter Young Adult Conference* Jan. 3-10  
A conference for young adults with cancer, ages 17-23

### 1998 Spring Programs

*Care Givers' Conference* May 14-17  
A conference for professional health care providers

### 1998 Summer Sessions

*Kids Camp* July 6-13  
Camp for children with cancer, ages 6-16

*Kids Camp* July 16-23  
Camp for children with cancer, ages 6-16

*Young Adult Conference* July 26-Aug. 2  
Conference for young adults with cancer, ages 17-23

*Young Adult Conference* August 5-12  
Conference for young adults with cancer, ages 17-23

*Siblings Camp* August 15-21  
Camp for siblings of cancer patients, ages 6-16

### 1998 Fall Programs

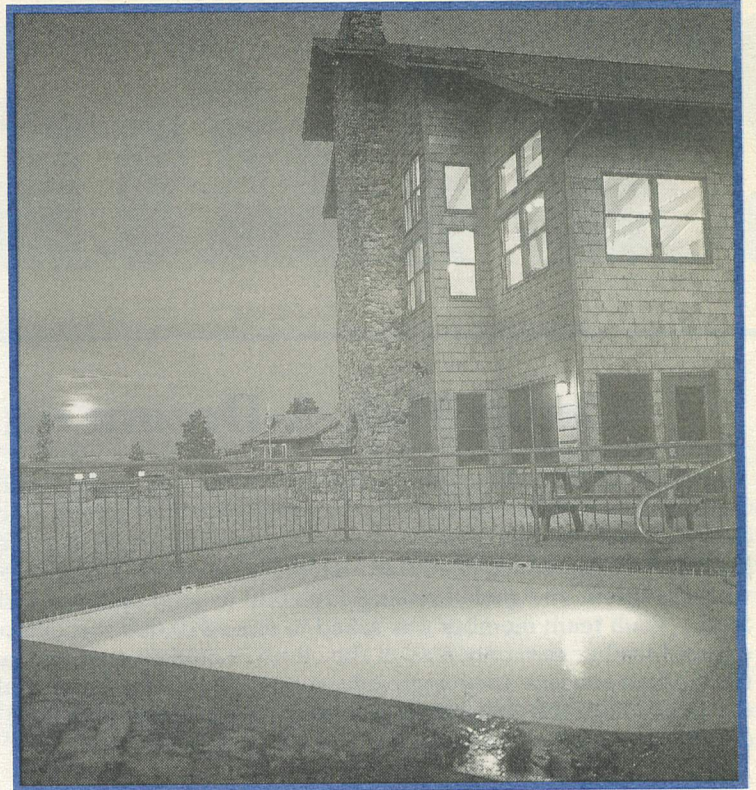
*Ovarian Cancer Retreat* August 27-31  
A retreat for women with ovarian cancer

*Camp Limberlimbs* Sept. 18-20

*Mens' Prostate Cancer Symposium* Sept. 25-27  
A conference for men, ages 18 and older, with prostate cancer

*Women's Cancer Retreat* October 8-11  
A retreat for women, ages 18 and older, with cancer

We are always looking for volunteers in various capacities. If you are interested in volunteering at any of these events, please contact our foundation office at (406)549-5987.



## Rent Gold Creek Lodge

### Home of Camp Mak-A-Dream

When you choose to hold your business, family or group retreat at Gold Creek Lodge, you'll be enjoying more than just fine facilities in a mountain landscape. You'll also be helping to support the programs of Camp Mak-A-Dream. This facility is available for rental groups of 10-120 people, for a day long meeting or for a several day retreat. So, make your next retreat one to remember.

Some of the things Gold Creek Lodge has to offer:

- \* Fully accessible buildings
- \* Main lodge with meeting rooms, recreation room and dining hall
- \* Four cabins with common rooms & kitchenettes
- \* Accessible heated swimming pool & hot tub
- \* Outdoor patio area with BBQ grills
- \* Sleeping capacity of 90 people
- \* Art Studio building
- \* Health Care Center
- \* Meeting & activity rooms
- \* Smoke-free facility & grounds
- \* Ropes Course and archery range
- \* Fine dining & variety of menu options
- \* Competitive rates & excellent service

Medical Support:

This facility is equipped to provide medical care for groups that have unique medical needs. This service can be designed and arranged to fit a variety of needs. Please contact the foundation office for additional information.

The Gold Creek Lodge facility is a great place to hold team-building workshops, meetings or private family gatherings. It is available for rent from September through mid-June with a few exceptions. Let us help you create a retreat to remember with our professional staff and programming options. Call our foundation office for more information or to book your reservation at (406)549-5987.

**GIFTS WERE  
MADE IN  
MEMORY OF...**

Bailey Abel  
Archie Abell  
Karen Adams  
Donna Adler  
Louise Adler  
Margaret Alfredson  
Pokey Allen  
Dave Almendinger  
Carlyle "Ed" Alton  
Anabelle  
Jewell Anderson  
John R. Anderson  
Mary Anderson  
Betty Lou Andrews  
Scott Arnold  
Betty Arpajian  
Elsie Arpin  
Ryan L. Auch  
Angelo Bagnasco  
Patricia "Patsy" Baian  
Clione Baker  
Janice Baker  
Jerry Baker  
J.A. Bandurant  
Dan Bangeman  
Marvin Barber  
George Barkovich  
Jerri Barnes  
Thelma Bartholomew  
Christina Barton  
Rosie Bartz  
Ruth Bastian  
Helen Batchelor  
Sylvia Batten  
Al Baucher  
Fred Baumgartner  
Angela Bean  
Mary Beatty  
Verneita Bergstrom  
Therin Besaw  
Laura Bestland  
Zola Betz  
Jane Hartman Beyer  
Birdie Bibler  
Martha Bickford  
Beverly Birkeland  
Leonard Birkendorf  
Edgar Bisson  
Joseph Bivens  
Robert Bizjak  
Phillip Blank  
Steve Blankovich  
John J. Blelle  
Ed Blonick  
J.D. Boe  
Jay Bondurant  
Florence Bonner  
Muriel J. Border  
Mickey Boryan  
Alfred Bouchen  
Veronica Bourke  
Richard Bowers  
Mitchell Bowman-  
Gleason  
Web Bowman  
Carol Boyd  
Ruth Bradley  
Charles P. Bradshaw  
Harry "Bud" Bray  
Jason Patrick Brennan  
Clarence H. Bridgeford  
Donna Britton  
Bill Brolin  
Curtis L. Brown  
Lily Rose Brown  
Ila Brunett  
Edwin Buchanan  
Arthur A. Bucholz  
Ellen Clare Buckley  
Eileen Bugni  
Clarence E. Bullock  
Verla Bush  
Irene Butterfield  
Rodney Bybee  
Jeryl Ann Tucker Byers  
Muriel Border  
Charles Brown  
Tom Cahill, Sr.  
Wilda Cahill  
Fern Calbick  
Elaine Calderwood  
Mickie Callahan  
Florence Calvert  
Christine Campanella  
Marg Cannon  
Andrea Carlson  
Harry J. Carter  
Maxson O. Case  
Virginia Catlin  
Janet Chamberlain  
Alice Chambers  
J.R. "Bud" Chapeski  
Betty Chatriand  
Homer Chesley  
Jeanie Chilcote  
Grace Christensen  
Dean Christenson  
June G. Clark  
Walt "Bud" Clark  
Carna Clark  
Bob Clifford  
Dan Coburn  
Alex & Hilda Cody  
Donnino "Tony" Cogo  
Edna Colby  
Harley Combs

Harold Cook  
Helen Corbin  
Gary Cordial  
John Cote  
Oliver Cousineau  
Val Covington  
Sam Cox  
David Coy  
Kenneth Craft  
Christine Cromrick  
Millie Crowe  
Blaine A. Cummins  
Rose Cunningham  
Pat Curran  
Shirley Dabovitch  
Eleanor Dallsman  
Donald Damschen  
Charles Davis, Sr.  
T.J. Davidson  
Peter Day  
Peggy Harrison Dean  
John Deberti  
Don W. Difrancesco  
Tony Dike  
Paul Ding  
Ora Dishman  
Mattie Dixon  
Hazel Dobson  
Mike Doerfler  
Dick Doggett  
Hilda Donahue  
Ed Donaldson  
Kay Donaldson  
Donald K. Dorville  
Evelyn Dragstedt  
Jim Drangas  
Earl Draper  
Don Dresel  
Bobbi Druyvestein  
Carla Griffin Duncan  
Marvin Duty  
Oswald Eide  
May Eisinger  
Jack Elder  
Joseph E. Erickson  
Clarence L. Evans  
Marion Evans  
Bob Everhard  
Carl E. Faber  
Muriel Falcon  
W.R. Fallis  
Donald D. Farnum  
Chuck Faulkner  
Adolph F. Favero  
John F. Finger  
Jake Finkbeiner  
Craig Finnegan  
James J. Finnegan  
Helen Fischer  
Marjorie Fishbaugh  
Norman Flamm  
William Flink  
Leah Foran  
Ethel Forney  
Elaine S. Forsberg  
Jimmy Dawn Foust  
Ray Fox  
Edna Frey  
Beth Fry  
Amanda Frye  
Ben Funk  
Howard Gaare  
William Gallegher  
Jean Gantenbein  
Landon Gemar  
Madelaine Gemar  
Frankie George  
Al Gerdt  
Mario Gerradoni  
Alfred Gerts  
Inky Gibson  
Mary Gillis  
Pauline E. Godman  
Lenore Goin  
Don Gould  
Violet Graham  
Gary C. Gravatt  
Esther Gray  
Irene Gray  
Bob Greene  
Lois Greenheck  
Genevieve Gross  
Jerry Gross  
Dorothy Haffey  
Wally Hagstad  
Helen Irene Hall  
Robert B. Hall  
Jim Hamburg  
Andrew Hammond  
Gary D. Hancock  
Tim Hanifen  
Vernon "Bud" Hanson  
Verneeta Hanson-Ricci  
Claude & Adena Hardy  
Hoy Harter  
Albert Harworth, Jr.  
Lois Hauptman  
Virginia Haux  
Kit Hayes  
Ken Heare  
Kate Heinrich  
Ervin Helman  
Elenore Henry  
Mary Henschel  
Vern Hensley  
Boise Hesselgesser  
Theron Hiam  
Glen Hickethier  
Clara Hill  
Mary Hill

Ralph T. Hillstrom  
Alvin Hoar  
William Hodge  
Lowell Hogan  
Helen Hogan  
Casey Hogue  
Gilbert Holliday  
Ruth Holloran  
Erv Holman  
Jackie Holter  
Joe E. Hood  
William Horne  
Loretta Hossfeld  
Steve Huckaba  
Rebekah Huey  
Dorothy Huffey  
Frank Hughes  
Mary Hunt  
Jim Hunt  
Florence M. Huntsman  
Peter Day  
Bobbie Infantino  
Joe Jabara  
Betty Jacobs  
Joan V. Jacobson  
Anita James  
Jack Janisko  
Bill Janss  
John Jausch  
Susie Jauquet  
Boyd P. Jensen  
Pat Jewel  
Mary Jirsa  
Leo John  
Barbara & Alfred  
Johnson  
Betty Lorraine Johnson  
Bill Johnson  
Carl Johnson  
Gary Johnson  
Gayle Johnson  
Maude Johnson  
Jim Jones  
Thomas Jones  
Wendell Jones  
Joe Jordan  
Ann Joseph  
Ruth Joyce  
Katie Judd  
Eddie Juvan  
Pat Kailey  
Alice Ryan Kanthack  
John Keith  
Joseph Keller  
Pat Kellogg  
Frank H. Kelly  
Helen K. Kelly  
Murm Kelly  
Marge Kempner  
Beth Kerns  
Clifford S. Kerns  
Tom Kieckbusch  
Jim Kiedrowski  
Paul Kink  
Howard G. Kirk  
Katie Klobchar  
Harold Koehler  
John Kopp  
Olive Krein  
Barbar T. Kress  
Jean Kruse  
Tom Kuena  
Otto Kvaalen  
Chance La Rogue  
Leo LaCasse  
Molly Leann Lachman  
Jack Ladell  
Dee Laine  
Dr. Laine  
Allen Lamorex  
Meron Landon  
Lillian Larson  
Karen Larson  
Norwin Larson  
Holly Laslovich  
Eunice Lason  
Floyd H. Lathrope  
Clara Laughlin  
Marie Laurvick  
Sel Lester  
William Lester  
Jerome Lincoln  
Pat Lindsey  
Maxine Linendoll  
Helen Little  
Scotty Lochrie  
Eddie Lockett  
Jack Lodell  
Paula Marie Lovas  
William Lovell, Sr.  
James Lucey  
John Lunda  
Rodney Lundquist  
Margie Maclay  
Anthony Maddaloni  
Phyllis Madsen  
Martha Mail  
Amelia Malone  
Carl Mann  
Grace Mapston  
Vivian Marchie  
Joanne Marshall  
Ron Martelli  
Theresa Marthaller  
Bob Martholler  
Edwin Martin  
Karen Martin  
Rosalyn Martin  
Linda Mason  
Peggy Mast  
Katherine Matich

Maxine Matovich  
Red Matthews  
Martha Maul  
Alice Maurer  
Mary Mawson  
Bud McGee  
Leo McAndrews  
Edward & Katherine  
McAuley  
Gertrude McCarthy  
Margaret McCarthy  
William McCollum  
Kay McDonald  
Loyola McDonnell  
Martha McElwain  
Amber McGee  
Orville A. McGee  
James McIntyre  
Dale McKerrow  
Gary McKinney  
John "Jack" McLaughlin  
Ruth McLaughlin  
Denis McLusky  
Alex McLuskie  
Mary McLuskie  
Don McNay  
Frances Meade  
Joseph Meagher  
Rudy Meleick  
George Meltzer  
Patricia Mendenhall  
Bub Mero  
Charlotte Mershon  
Eugene Meyer  
William Meyn  
Gene Miles  
Curtis Miller  
Eileen Miller  
Jack Miller  
John D. Miller  
Karen Miller  
Mary E. Miller  
Henry John Miller  
John Milodragovich  
Dotta Patricia Mini  
Bruce Minster  
Sherry Mitchell  
Ronald G. Mitson  
Lorelei Monacie  
Robert Monaco  
William Mondik  
Mal Monnahan  
Michael Noon  
Joyce Montichka  
Marguerite Moran  
Mae Morin  
Sam Moritz  
Almar Morken  
Mike Morris  
Virginia Morrison  
Anna Moudy  
Geneva Boudy Moulton  
Phil Muchmore  
Chris Murphy  
John Murphy  
Shawn Murphy  
Susan McCollum  
George Meltzer  
Marian Nahula  
Betty Lou Nelson  
Hilda Nelson  
John Newlon  
Everett Nice  
Henrie Nichol  
Garth Nicholls  
William B. Nichols  
Leanne Niland  
William Niland, Sr.  
Scott Northey  
Jean Sharon Nunn  
Bill O'Connor  
Oakie O'Connor  
Mary Olsen  
Charles Olson  
Mary Olson  
Norine Ornellas  
Richard Ostergren  
Ron Osterholm  
Ralph Oswald  
Virgil Overcast  
Joe Palakovich  
Mary Palakovich  
Doris Parker  
Mildred Pasha  
Ethel Patti  
Larry Pelitier  
Ann Pentilla  
Harold A. Perttu  
Anthony Peruchietti  
Jerrilyn Peters  
Mabel Peterson  
chester Petrella  
Barbara Petroff  
Clifford Phillips  
Minnie Pillow  
Albert Pilsch  
Genevieve Poitras  
Mike Poli  
Robert F. Poole  
Otto Popvick  
Bob Porter  
Princess Diana  
Pat Procaccio  
Nancee K. Putnam  
Ethel Phelps  
Colin Raft  
Ed Rannberg  
Howard Rasmussen  
Charmel Reesor  
Nimey Reid

Madeline Remick  
Kenneth Resner  
Terry L. Rettig  
Lucile Rhodes  
G.S. Rice  
Mary Richards  
Walt Richards  
Frank Risch  
Mrs. Roach  
Jack Roberts  
Jean Robinson  
Norma Robinson  
Esther Robinson  
Betty Rogers  
Elizabeth Ann Rogers  
Gery Rogers  
John Roogen  
Florence Roozen  
Erna Rosa  
Robert D. Ross  
Robert J. Rowley, Sr.  
Sarah Rucker  
James Ryan  
Shawn Ryan  
Jim Sabo  
Ellis Sagen  
Erva Sager  
Mark Hunter Samuel  
Paula Sand  
Thelma Sanders  
Valdimir Sarceovich  
James Sawtell  
Francis Scheffer  
Mrs. Schiff  
Jesse Schuette  
Dorothy Scott  
Secret's Angel  
Rick Seewald  
Jason Derek Seiger  
Leonard Senechal  
Jim Shea  
William Shea  
Mary Shields  
Frances Shipley  
Kenneth Shughard, Jr.  
Nat Silverman  
Joan Simmons  
Maria Sinelli  
Hilda Singleton  
Frances M. Skogland  
John Sladich  
Beatrice Sletten  
Keirin Smart  
Marion Smarrt  
Everett Smith  
Floyd Smith  
Merlin Smith  
Donald Smollack  
Norvel Snyder  
O.A. Sokoloski  
James A. Sontag  
Jennifer Soper  
Bussie Sopher  
Mark Sowre  
Genevieve Spaulding  
Lynn Speare  
Ruth Spence  
Wilfred Spiker  
Charles Spillum  
Lyall Spooner  
Georgia Spooner  
Leonard Staudacher  
Bud Stebbins  
Alton Sterry  
Richard Stevens  
Laura Stevenson  
Frank Stevenson  
John Stiegler  
Phyllis Stocks  
Irwin Stohl  
Ella Stokes  
Bonnie Strom  
Britt Strom  
Bill Sullivan  
Mary Sullivan  
Padraig Sullivan  
Ronald E. Sullivan  
Alvin & Eleanora Susott  
Sylvia Sustello  
Keenan Patrick & Bryan  
Quane Swanson  
Pam Taligrenia  
Lillian Tande  
Robert W. Tarbox  
Shirley Tate  
Courtney L. Taylor, Jr.  
Gail Taylor  
John Ray Teague  
Bridget Cecilia Thomas  
Mary Claire Thomas  
Suzanne Thomas  
Joshua Thompson  
Mary Gertrude  
Thompson  
Russell Threlkeld  
Otto Thress  
John Thruston  
Maureen Thurston  
Otto Tietz  
Dan Torpey  
Nellie Trent  
Reg Tucker  
Carl E. Turnquist  
Joan Twedt  
Gene Ulver  
Wesley Vacura  
Ruth Van Luchene  
doris Van Nulund  
Delbert Vannice  
Larry Varner

Robert C. Vasser  
Myrl Viall  
Vic Victorino  
Herman Villeneuve  
Ted Vinton  
Margaret "Peg" Wagner  
David Wallace  
Patsy Wallace  
John Walsh  
Clarence Walter  
Corra Walters  
Thomas Watson  
Lucille Webber  
Fred & Anne Webber  
Joyce Weinburger  
June Welch  
Florence Werson  
Arlene White  
Bob White  
Louis White  
Mary "Pinky" White  
Vern White  
Magen Wickum  
Bill Wiley  
Thomas Williams  
Ann Willough  
Adrian Wilson  
Forrest D. Wilson  
Colton James Winfield  
E.R. Winninghoff  
Bertram Wise  
Gladys Wishard  
Merle Wolfe  
Alice Wright  
Helen Wrzesinski  
Robert Wyckoff  
Bill Wyman  
Mohammed Yamoore  
Jennie Yates  
Donald W. Young  
Lora Dean Zarko  
Melvin Zielke, Jr.  
Lloyd "Bud"  
Zimmerman  
Travis Zink

**GIFTS WERE  
MADE IN  
HONOR OF...**

Anaconda High School  
Class of '42  
Amy & Ted  
Arrowsmith's  
Wedding  
Leroy & Betty Baker  
Frankie Barnhill's  
Birthday  
Amanda, Haven,  
Ditunno & Vincent Bott  
Laura Boutni  
Bill & Betty Briggs  
Dennis & Robert  
Campbell  
Craig, Beth, Mike, Erin,  
Lacey & Brandon  
Diettert  
Ashley Fenner  
Ted & Darlene Fisher  
Jack Francisco  
Wendell & Dorothy  
Frojen  
Sandy Johns Giese  
Russ Glisan  
Harry & Sylvia  
Granader  
Jeff Greer Family  
Jason Greer  
Teresa Hall  
Ernie & Hannah  
Hofmann  
Hallie & Abby Kaplan  
Mark, Stanford &  
Laura Kelly  
Poppy Kerass  
Robert Kissell  
Amolia & Herbert  
Krukenberg  
Lund, McCoy, Sullivan  
& Murfit  
Kim Mastinton's Birth  
Scotty & Lois  
McMeekin  
Theodore Peter Mendez  
John, Gary, Frank &  
Cherly Nuckalls  
The Peterson Children  
Lloyd & Helen Richey  
Larry Riley  
Macken Rostad  
Mr. & Mrs. Lou Schaffer  
Hertha M. Scharosch  
Barbara Schubert's  
70th Birthday  
Jack & Betty Schutte's  
50th Anniversary  
Elayne Severson's  
Birthday  
The Marriage of Dr.  
Robert & Anne Shields  
Clyde, Fritz, Betty &  
Leo Smith  
Mary Townsend  
Duane Wood  
\* Received between 2/1/97-  
2/28/98. It is our intent to  
recognize all contributions.  
We make every effort to  
maintain an accurate listing,  
however, we do apologize for  
any discrepancies.

**CHILDREN'S ONCOLOGY  
CAMP FOUNDATION  
FULL & PART-TIME STAFF**

Gregg Doerfler  
*Executive Director*  
Connie Hanson, RN  
*Camp Director/Health & Safety*  
Stuart Kaplan, MD  
*Camp Director/Camp Physician*  
Jennifer Benton  
*Foundation Office Manager*  
Karen McNenny  
*Asst. Camp Director*  
Bonnie Karrer  
*Bookkeeper*  
Danny Riddle  
*Food Service/Rental Coordinator*  
Roger Perrier  
*Facility Manager*  
Shirley Hummer  
*Volunteer Coordinator*  
Carole Hollenback  
*Campus Coordinator*

**OFFICERS**

Paulette Fisher  
*President*  
Dave Calahan  
*Vice President*  
Tom Copley  
*Treasurer*  
Sharon Snavelly  
*Secretary*  
Sally Francis Kehayes  
*Past President*  
Dan Carlino  
*Member at large*  
Melanie Nedrud  
*Member at large*

**LOCAL BOARD**

Shirley Beck  
Dr. Cathy Capps  
Dr. Tim Carte  
Dr. Henry Gary  
Kent Kleinkopf  
Gary Koprivica  
Brenda Lange  
Pete Lawrenson  
William Liberson  
Dennis Lind  
Kitty Lusse  
Ken Reesman  
Larry Riley  
Brian Salonen  
Barry Shapiro  
Kim Visser  
Twila Wolfe

**REGIONAL BOARD**

Lowell Bartels  
John "Harp" Cote  
Max Ericson  
Sharon Farrell  
Bob Gauthier  
Rev. Ernest Green  
Phil Grimm  
Dick Hughes  
Debbie Jackson  
Mark McDonald  
Mark Staples  
Russ Ritter  
Dr. Sheila Stearns  
Donna Ueland

**HONORARY BOARD**

Harry & Sylvia Granader  
Danny Granader  
Susan O'Connor  
Phyllis Washington  
Sophie Craighead

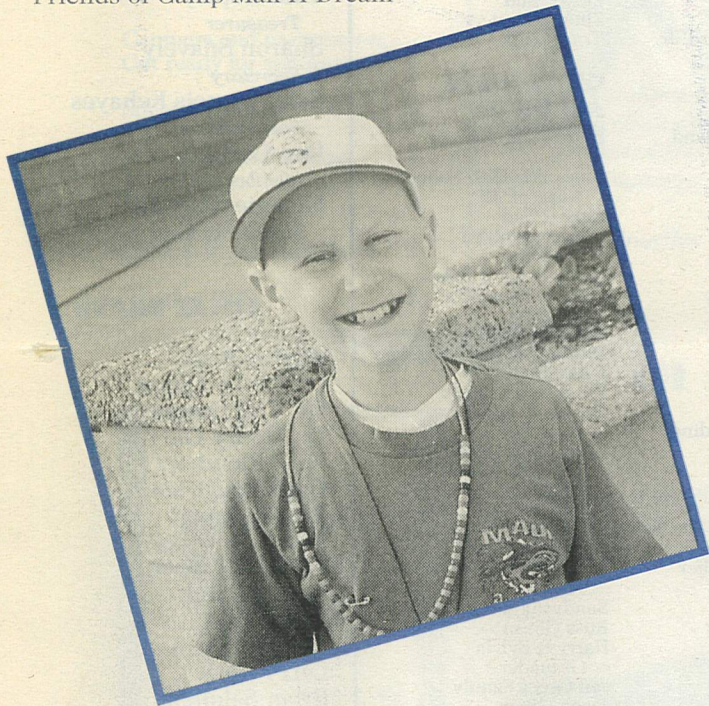
## Michigan Chapter: Friends of Camp Mak-A-Dream

Each year thousands of children and young adults are diagnosed with cancer in the United States. Due to this life-threatening disease, these young people are forced to miss out on many youthful activities. Instead they are thrust into a world of pain, illness, hospitals, drugs and therapy.

Camp Mak-A-Dream gives young people with cancer an occasion to focus on their opportunities rather than their limitations. The camp offers a chance to take part in normal activities such as camping, swimming and horseback riding. Not only does Camp Mak-A-Dream offer physical opportunities, it builds self-esteem and self-confidence while developing friendships.

Here at the Michigan Chapter of Camp Mak-A-Dream, we are making every effort to help support the camp and the children and young adults that attend. In 1997, we raised approximately \$75,000 and our goal is to double that in 1998. It is our intent to raise these funds through corporations, foundations and charity organizations. Hopefully, our efforts here in Michigan will lead the way to a national network of "Friends of Camp Mak-A-Dream."

Barry Shapiro - President, Board of Directors  
Friends of Camp Mak-A-Dream



## The Mailbox



*"I am a 17 year old girl going through chemotherapy. I would like to thank you; I attended Camp Mak-A-Dream's Young Adult Conference in August and I just wanted to let you know what a difference you made in my life. I will never forget the camp, and I will also never forget what a gift you have given. Thank you!"*

**Erin, Age 17 - Young Adult, Minnesota**

*"Thank you and all your helpers for my daughter's week at camp. She enjoyed herself so much. It also helped her to see and deal with things she didn't want to talk about. She is doing great! She will have her last chemo treatment next week, and is already talking about when she comes to camp next year. Thank you for caring for others, and especially for taking such good care of our Mary."*

**Tom and Jane - Parents, Montana**

*"In August, our daughter attended your Young Adult Conference and she said it was the 'best thing she's ever had' and looks forward to going again and reuniting with her new friends. Thank you so much! She has so many happy memories."*

**Joan - Parent, Washington**

*"I am the mother of three daughters, one with cancer and two without. This past summer my two daughters without cancer attended your siblings' camp. I find it difficult to put on paper the gratitude I feel to you all. There were so many thoughtful little things that went on that really touched my heart and my girls...keep up the good work, touching lives."*

**Lylia - Parent, Washington**



**WE WOULD LOVE TO HEAR FROM YOU, TOO.  
PLEASE WRITE SOON!**

8



### Children's Oncology Camp Foundation

3700 Russell, Bldg. B  
Suite 101, Lower Level  
Missoula, MT 59801  
P.O. Box 1450,  
Missoula, MT 59806-1450

NON-PROFIT  
U.S. Postage  
**PAID**  
Permit #368  
Missoula, MT