



# THE DREAMCATCHER

CAMP MAK-A-DREAM ★ GOLD CREEK, MONTANA

## OUR MISSION

Camp Mak-A-Dream provides a medically-supervised, cost-free Montana experience, in an intimate community setting, for children, young adults and families affected by cancer.

## 2010 Schedule

*Programs are offered FREE of cost*

### May 13 – 17

Ovarian Cancer Retreat  
Women diagnosed with ovarian cancer

### June 8 – 13

Young Adult Survivors Conference  
Young adult cancer survivors, ages 18 – 40

### June 16 – 23

Young Adult Conference  
Young adults with cancer, ages 18 – 40

### June 30 – July 5

Teen Heads Up Conference  
Brain tumor survivors, ages 13 – 18

### July 9 – 16

Teen Camp  
Teenagers with cancer, ages 15 – 18

### July 20 – 27

Siblings or children of cancer patients, ages 6 – 17

### July 31 – August 7

Kids Camp  
Children with cancer, ages 6 – 14

### August 11 – 16

Heads Up Conference  
Survivors of pediatric brain tumors, ages 18 – 25

### September 9 – 13

Ovarian Cancer Retreat  
Women diagnosed with ovarian cancer

### September 23 – 26

Women's Cancer Retreat  
Women diagnosed with cancer

*For more information and applications, please visit [www.campdream.org](http://www.campdream.org).*



## CAMP MAK-A-DREAM CELEBRATES ITS 15TH ANNIVERSARY 1995-2010

Harry Granader had a dream — to bring children facing illness together in Montana. Back in the early 1990s Harry shared his idea, his dream, of building a camp for children with cancer with his wife, Sylvia, their friends, family, business associates — and no one could ever say no to Harry. So not long thereafter, steps were taken to establish a nonprofit organization (the Children's Oncology Camp Foundation) and board of directors. Next came the challenge of raising enough money to build cabins, a lodge, an art building and a pool on the 87 acres of land, adjacent to the cattle ranch in Gold Creek, that the Granaders generously donated to become the Camp.

Communities in Western Montana were both receptive and extremely supportive in raising enough money to get construction underway. And on July 21, 1995, Camp opened its doors for the first time to 46 children with cancer, primarily from Montana and Michigan (the Granaders' home state).

In the 15 years following that remarkable day, Camp Mak-A-Dream has expanded its schedule offering programs year-round for children, teens, young adults, adults and also siblings/children of cancer patients ... all free of cost to participants. These programs have now served more than 4,800 participants from 49

states, plus six different countries. We've pioneered programs for young adults, young adult survivors, brain tumor survivors and ovarian cancer patients.

Of course we couldn't do any of these things without the generous support of individuals, businesses and communities who donate money, time, energy, expertise, products and endorsements for the work we do. To everyone who has been involved with Camp Mak-A-Dream in some way over the years, thank you. You have made a difference in the lives of others and helped thousands of dreams come true!

To all of the campers we've welcomed to our lovely getaway in Gold Creek, you are the reason Camp Mak-A-Dream lives on and continues to be the safe, supportive, enriching experience it is today and it wouldn't exist without you.

To Sylvia Granader, our founder and love of Harry's life — we love you and will always be grateful for the incredible gift you and Harry gave in creating this special place. We wish you a very happy 90th birthday and hope to share it with you in Montana!

On the following pages are just a few highlights from the last 15 years at Camp Mak-A-Dream. We look forward to continuing to provide a place for cancer patients, survivors and their families to come together, share their stories, form friendships, learn new things, have fun and mostly just feel "normal" for many years to come!

# Help Someone Get to Camp by Donating Frequent Flyer Miles

If you have 25,000 or more unused frequent flyer miles, we'd love to talk to you!

Camp Mak-A-Dream can utilize miles in blocks of 25,000 or more on various airlines including Delta, United and Horizon/Alaska Air. We are also happy to accept any transferable discount coupons, codes or other special offer vouchers.

## Donated miles help us:

- ★ Get campers to Camp from all across the country
- ★ Allow staff to travel to promote Camp and raise funds
- ★ Bring in professional presenters & speakers for our programs

**Your gift of 25,000 miles (or more) means a child or young adult who may not otherwise be able to attend Camp ... can!**

*If you're interested in donating miles, please contact **Shirley Hummer** in the Camp Mak-A-Dream office at (406) 549-5987 or [shirley@campdream.org](mailto:shirley@campdream.org).*



## TIMELINE

1995

Camp's grand opening

1997

Established Siblings & Ovarian Cancer programs

Friends of CMD-Michigan formed

1999

Hosted 252 campers from 36 different states

First annual Patsy O'Neill Golf Classic to benefit Camp (over the years this event has raised more than \$154,000 for Camp)

2001

Outgrew our office and moved it out to Fort Missoula

Established a teen-specific program for cancer patients/survivors

Partnered with the American Diabetes Association to hold their camp at the Camp Mak-A-Dream facility

1995

1996

Established the Young Adult Conference and Women's Cancer Retreat

Launch of Camp's first Web site

1998

New outside interest in fundraising for Camp: Lawman 100, Flathead Hoopfest, Mt. McKinley survivors climb

2000

Camp Mak-A-Dream's 5th Anniversary season

Began renting out Camp facility in the off-season

Hosted first Quick Draw Gala & Auction event

2002



Partnership with the National Auto Body Council, the MJ Murdoch Charitable Trust & kickoff of capital campaign to raise funds for a new health care center at Camp

First annual RATPOD (Ride Around the Pioneers in One Day) cycling event (since then this event has raised about \$1.2 million for Camp)

## Camp Mak-A-Dream Partnerships

### Funding Campaign Partner

#### The Coleman Company

In August 2009, Scott Henrikson, senior vice president Americas' Sales for Coleman, and Martin E. Franklin, chairman and CEO of Coleman's parent company Jarden Corp., conquered the Leadville (Colo.) 100 Trail Ultramarathon, to help raise awareness and funds for Camp Mak-A-Dream.

Henrikson completed the race in an official time of 29 hours and 33 minutes, while Franklin finished in 27 hours and 47 minutes.

"Thanks to everyone who supported me for the Leadville 100-mile Ultramarathon," Henrikson said following the event. "The race was the most difficult physical challenge I have ever faced. I sincerely appreciate the never-ending support and the special motivation to help my new young friends at Camp Mak-A-Dream. Any pain I may have felt for nearly 30 hours of running is nothing compared to what a child facing cancer feels. It was truly an honor to represent Coleman and run for this cause. Stay tuned for a 2010 event!"

The 2009 Coleman campaign donations totaled more than \$63,000 for Camp!

### Program Partners

#### Lance Armstrong Foundation – Young Adult Alliance

#### YOUNG ADULT ALLIANCE

The Lance Armstrong Foundation was one of our early program partners. In 2003, they helped us plan and provided financial support for our inaugural Young Adult Survivor Conference. In 2006, they planned and implemented workshops on grass-roots advocacy at that conference. Camp Mak-A-Dream is a charter member of the L.A.F. Young Adult Alliance.

#### CancerCARE & Children's Cause for Cancer Advocacy

CancerCARE, a national informational and advocacy organization based out of New York, was a partner in planning and implementing the Young Adult Survivors Conference program in 2008. Experts from the Children's Cause for Cancer Advocacy, based in Washington, D.C., provided workshops on how young adults can make a difference in the cancer community at home and nationally.

# President's Message

Dear Friends of Camp Mak-A-Dream:

In his renowned book *Travels with Charlie: In Search of America*, legendary author John Steinbeck wrote, "I'm in love with Montana. For other states I have admiration, respect, recognition, even some affection. But with Montana it is love. And it's difficult to analyze love when you're in it ..."

If a Nobel and Pulitzer Prize-winning author, such as Steinbeck, could not find the accurate words to express his awestruck feelings for Montana, my efforts will likely be futile. However, while language can never define the affinity of Montana, the best word I can use to describe its splendor is *hope*. At Gold Creek you can feel, but hardly describe, the hope in the breathtaking snowy mountains, in the waving golden prairie and in the always optimistic people who live and work there.

For 15 years, Camp Mak-A-Dream has made it possible for thousands of children, young adults and families affected by cancer to experience the profound hope that can only be found in our weeklong Montana camps. We use this hope not to cure cancer, but to beat cancer. We beat it by forming lifelong Montana friendships, by climbing Montana mountains, by floating Montana rivers, by roasting marshmallows under star-filled Montana skies, by comparing scars under the shade of Montana ponderosa pines, and most importantly, by contributing our time and resources to those affected by cancer so they may experience the undescrivable inspiration and hope that is Montana.

On behalf of all the employees and directors, thank you to all of our supporters for the time, talents and resources you provide that allow Camp Mak-A-Dream to share the infinite hope that is Montana. With your support and efforts, we promise to continue to beat cancer one week at a time.

Best regards,

*William E. McCarthy*  
Board President

2003

Groundbreaking on new Health Center building  
First Young Adult Survivors Conference offered

2005

Camp Mak-A-Dream's 10th Anniversary  
Produced new promotional DVD about Camp programs

2007

Added new program areas at the Camp facility, including mini-golf and a tree house / zip line  
Formalized a Long Range Plan for the future growth of Camp Mak-A-Dream

2009

Opened our first branch office in the Upper Midwest region to help recruit and raise funding for Camp.  
Partnered with The Coleman Company on a very successful fundraising campaign

2010

2004

Grand Opening of new Health Center building



2006

Our founder Harry Granader passed away  
Partnered again with the National Auto Body Council to purchase a new bus

2008

Offered first Heads Up Conference for young adult survivors of childhood brain tumors

2010

Camp Mak-A-Dream's 15th Anniversary Adding new program for teen survivors of childhood brain tumors  
Camp has now welcomed more than 4,800 participants!

## SAM Fund



SAM Fund, an organization that provides financial assistance to young adult cancer survivors, was founded by a participant of our very first Young Adult Survivor Conference, Samantha Eisenstein Watson. Since 2003, SAM Fund has provided travel scholarships for many Camp programs.

## Children's Brain Tumor Foundation



In 2008, Camp Mak-A-Dream teamed up with the Children's Brain Tumor Foundation to create the first-ever community program for young adult brain tumor survivors, which we now call the Heads Up Conference. This one-of-a-kind program provided participants with resources and skills to succeed in peer-to-peer relationships as well as in employment. A close-knit community formed during that first 2008 gathering and has remained a pillar of support since — via phone, e-mail, social networks and even face-to-face visits. This pilot program was so successful that it continues to be part of Camp's annual program schedule. In addition, the Children's Brain Tumor Foundation is a full partner in the planning and implementation of our first-ever Teen Heads Up Conference this summer, a program for teenage brain tumor survivors modeled closely after our young adult brain tumor program.

## Recruitment Partners

Each season, Camp Mak-A-Dream relies heavily upon members of the medical community around the country to help spread the word about our cost-free programs for cancer patients, survivors and their families. Often, participants learn about Camp through the medical center at which they are treated. Over the years, we've had hundreds of participants attend Camp Mak-A-Dream through the recommendation of the following centers/organizations (as well as numerous others) and we'd like to acknowledge and thank them for their continued support of our programs.

Baylor University Medical Center,  
Dallas/Ft. Worth, Texas

Cancer Connection of Massachusetts,  
Florence, Mass.

Children's Hospital of Michigan,  
Detroit, Mich.

Cook's Children's Oncology Center,  
Ft. Worth, Texas

Gilda's Clubs, across the U.S.

Helen DeVoss Children's Hospital,  
Grand Rapids, Mich.

Hershey Medical Center,  
Hershey, Pa.

HOPE in Oklahoma,  
Oklahoma City, Okla.

Johns Hopkins Children's Hospital,  
Baltimore, Md.

Minneapolis Children's Hospital,  
Minneapolis, Minn.

C.S. Mott Children's Hospital,  
Ann Arbor, Mich.

O.A.K. (Ovarian Awareness of  
Kentucky)

Sacred Heart Medical Center,  
Spokane, Wash.

St. Jude Children's Research Hospital,  
Memphis, Tenn.

SuperSibs, Rolling Meadows, Ill.

If your business or organization would like to learn more about becoming a partner with Camp Mak-A-Dream, please call us at (406) 549-5987.

# A Message from Our Founder

Reflections from Sylvia Granader  
By Jennifer Benton



Sylvia says she's very much looking forward to another season at Camp Mak-A-Dream and always finds it so enjoyable to be with the campers. It's obvious that being part of Camp is very important to her and she is grateful to her late husband, Harry (founder of Camp), for including her in his dream to build this place. She talks of Harry as such a kind person whose heart was completely 'in' this Camp. This Camp was Harry's dream — he spent years researching other camps and really had a vision in his head all along of just what the Camp would look like. He loved being here surrounded by the campers who all seemed to appreciate just how special a place he created for them to enjoy.

Now, all these years later, Camp is celebrating its 15th Anniversary. Sylvia is sure, as we all are, that Harry is looking down and smiling at that fact. Camp has come a long way since opening in 1995 and since that time has welcomed more than 4,800 participants from 49 states and six countries.

Although Sylvia's modesty doesn't allow her to in any way take credit for the many things she's accomplished over the years, we are happy to share a few of those with you (with her blessing).

In March, Sylvia was presented with a Congressional Gold Medal at the U.S. Capitol in Washington, D.C. This tremendous honor comes as a result of a bill — introduced by Senator Kay Bailey Hutchison and Senator Barbara Mikulski, and signed by the president on July 9, 2009 — recognizing the many women who served our country during World War II as WASP pilots. Although they were never considered part of the military or saw any combat, they did serve as test pilots and transported aircraft from one location to another, freeing up their male counterparts to serve in the war efforts in Europe.

And while this is a great honor, Sylvia says it doesn't hold a candle to the fact that she'll become a great grandmother for the first time this spring and she couldn't be happier about it!

Yet another milestone this year is that on June 18, Sylvia will celebrate her 90th birthday. On behalf of all of us at Camp Mak-A-Dream ... Happy Birthday, Sylvia! We thank you, we love you and we look forward to celebrating with you in Montana this summer.

# HOW YOU CAN HELP

## Sponsor a Camper with a Campership

Sponsor a child or young adult for a cost-free week of camp with a \$500 "Campership" donation.

## Make a Memorial or Honorarium Donation

Make a donation in memory of a friend or loved one, or in honor of a holiday or special occasion.

## Make a Pledge or Planned Gift

Pledge an amount to be paid monthly, quarterly or annually. You can also leave Camp

Mak-A-Dream as a beneficiary of your life insurance or in your will. Camp Mak-A-Dream is a proud participant in Legacy Montana, [www.legacymontana.org](http://www.legacymontana.org).



## Give an Item from Our Wish List

There are lots of everyday items and goods we need each camp season. You can help a lot by donating an item from our Wish List found on page 8.

## Display Our Literature

You can help us get the word out to possible campers, volunteers and donors by displaying a Camp Mak-A-Dream poster or brochures at your place of business or professional office.

## Have Us Speak at Your Civic Organization or Business Meeting

We love to share what's happening at Camp Mak-A-Dream with members of different communities. If you would like to learn about Camp at your civic organization or business, please contact Camp's Jennifer Benton.

## Volunteer

Spend the most incredible week imaginable by volunteering at Camp; you must be at least 18 years old to apply and go through an extensive interview process. Or volunteer in our foundation office or at a fundraising event.

## Volunteer Positions at Camp

- ★ **Cabin Counselors** support and assist campers 24 hours a day. They sleep in the cabins with campers, join daily and evening activities, and offer continuous support, encouragement and companionship to campers.
- ★ **Program Assistants** help organize the diverse activities at Camp, including art projects, outdoor recreation and special evening activities such as dances and campfires. The creative and enthusiastic are encouraged to apply!
- ★ **Dream Team members** help in the kitchen, dining room and lodge, doing everything from setting the tables to chopping vegetables for the salad bar. If you are interested in helping but want to stay out of the spotlight, we want you!

Applications for the above positions are available on our Web site at [www.campdream.org](http://www.campdream.org) or by calling our office at (406) 549-5987.

★ **Presenters** are individuals or groups with a special skill or service to offer our participants. Presenters generally come to Camp for a day and offer educational or activity-based services ranging from digital photography to art therapy.

★ **Medical Professionals** staff each Camp session — doctors and nurses review camper medical files, administer medications and handle any medical emergencies 24-hours a day.

## Rent our Facility

You can rent the beautiful Camp Mak-A-Dream facility, late August to mid-May, for your next gathering or meeting. For more information, please see page 6 or our Web site.

## Donate Frequent Flyer Miles

By donating frequent flyer miles you help fly a child or young adult with cancer to Camp. Or bring in professional program speakers. Or send our staff out spreading the word about Camp Mak-A-Dream. Your gift makes attending Camp possible for one who might not otherwise be able to get here.

## Host a Dream Tour

Are you a proud supporter of Camp Mak-A-Dream? Would you like to let others know about the great work going on in Gold Creek, Montana? Host a Dream Tour: a virtual tour of Camp Mak-A-Dream that can happen anywhere there's a DVD player. It can take place as an informal dinner party, a lunch, a cocktail hour, a dessert social or other creative get-together. Interested? Please contact Camp's Stu Kaplan.

## Donate Unused Ad Space

If your business has a regular ad space that you're not always using, donate it to Camp Mak-A-Dream to run an ad instead. Please contact Camp's Jennifer Benton.

## Corporate Matching Gifts

Many companies have a matching gift program that can match all or a portion of employee donations to charitable organizations — making your funds go even further. Check with your employer.



# Staff Additions & Anniversaries

## Welcome ...

**Anne Baker Geisler** joined Camp Mak-A-Dream as the field development officer for the Upper Midwest Office in November 2009. A native of Kansas, Anne got her bachelor's degree from Kansas State University and a Master of Public Administration degree from the University of Nebraska at Omaha. She has more than 10 years experience in nonprofit development and program management, including work with a variety of organizations such as the National MS Society-Minnesota Chapter, Ronald McDonald House Charities and Project Harmony Child Protection Center. Outside of her professional life, Anne spends most of her time trying to keep up with her two young boys. She is very excited about this new position with Camp and looks forward to working to increase awareness in the Upper Midwest!

**Jesse Mahugh** joined us in August 2009 as an intern and currently works as our administrative assistant. Before joining the Camp, Jesse attended the Young Adult Survivors Conference at Camp Mak-A-Dream in 2009 and was a mentor at the Heads Up Conference for brain tumor survivors later that year. He volunteers as a big brother with Big Brothers Big Sisters of Missoula and worked previously at the Poverello Center, a homeless shelter in Missoula. This coming October, Jesse will climb to the Base Camp of Mount Everest as a fundraiser for the Children's Brain Tumor Foundation, an organization that partners with Camp Mak-A-Dream on its brain tumor programs. Jesse is also a member of the Northwest Montana Fundraisers Association and the Treasure State Toastmasters Club. He is passionate about the ability each of us has to find opportunity in challenge and will receive his Master of Public Administration degree this summer from The University of Montana.

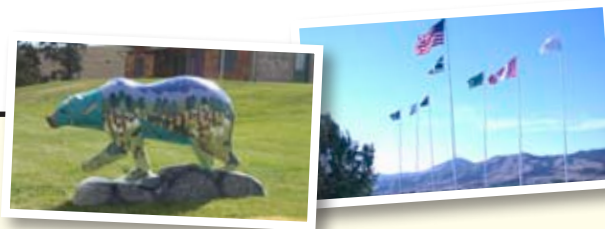
## Congratulations ...

**Shirley Hummer**  
Celebrating 10 years with Camp

Shirley Hummer still remembers walking across the "bridge of dreams" her first time, back in the summer of 1995 on staff training day — with the construction crew still hanging doors and painting. Being part of the growth of Camp and expansion of programs has been "more than rewarding," she says. Shirley started as a volunteer cabin counselor, and over the past 10 years has held many different and evolving positions as part of the foundation staff. One of her favorite things is being part of the planning process of what still lies ahead for Camp!

**Stu Kaplan**  
Celebrating 5 years with Camp

Although Stu Kaplan has only served as executive director for the past five years, he has been involved with Camp for many more — during the 10 years prior to his current position, he was a cabin counselor, volunteer camp doctor, camp director and a member of the Board of Directors. He likes many aspects of working at Camp, but most enjoys the opportunity to collaborate with other advocacy organizations in the cancer community. The ability to work with other groups has helped Camp Mak-A-Dream excel in the programs we provide for children, young adults and families affected by cancer.



# Campers REMEMBERED

**Magdalini Anderson**  
Hastings, Minn.  
April 2009

**Esther Jo Angel**  
Polson, Mont.  
July 2009

**Dov Bear Ashford**  
Winthrop, Wash.  
January 2010

**Nancy Balduf**  
Silverdale, Wash.  
January 2010

**Kathleen Brown**  
Oklahoma City, Okla.  
January 16, 2009

**Liz Brown**  
Miramar, Fla.  
January 2010

**Angela Bruno**  
Wyncote, Pa.  
July 2009

**Saralyn Cepak**  
Collierville, Tenn.  
February 3, 2009

**Natasha Collins**  
Prospect, Ky.  
August 2009

**Chloe Corlett**  
Drummond, Mont.  
October 11, 2008

**Tina Duca**  
Waltham, Mass.  
April 24, 2009

**Wendy Duncan**  
Oklahoma City, Okla.  
September 27, 2008

**Lucy Erlandson**  
Missoula, Mont.  
August 2009

**Dian Fedak**  
Ft. Augustine, Fla.  
May 2009

**Tammie Flaig**  
Great Falls, Mont.  
February 5, 2009

**Patty Fox**  
Ukiah, Calif.  
January 2010

**Nacee Frybarger**  
Brooklyn Park, Minn.  
June 2009

**Sanay Hemingway**  
Balsam Lake, Wis.  
August 2009

**Kevin Hertz**  
Sterling Heights, Mich.  
January 2010

**Shirley Inveen**  
Gig Harbor, Wash.  
March 11, 2009

**Linda Karpman**  
Longmeadow, Mass.  
December 15, 2008

**Kelly Lee Kilpatrick**  
Dandridge, Tenn.  
November 13, 2008

**Patty Kiser**  
Del City, Okla.  
June 2009

**Vicki Krebs**  
Helena, Mont.  
September 9, 2009

**Pam Lewis**  
Pembroke Pines, Fla.  
July 2009

**Marilyn Lindsay**  
Oklahoma City, Okla.  
February 7, 2009

**Rochelle McCready**  
West Hills, Calif.  
March 25, 2009

**Margi Melton**  
Clancy, Mont.  
July 2009

**Lorna Moss**  
Whitefish, Mont.  
February 16, 2010

**Jerene Nelson**  
Post Falls, Idaho  
September 6, 2008

**Linda Pignatiello**  
Chardon, Ohio  
April 2009

**Heidi Rensink**  
Delano, Minn.  
April 2009

**Deloria 'Doty' Stovall**  
Tyler, Texas  
July 2009

**Brent Swanson**  
Rockford, Minn.  
July 2009

**Linda Whitman**  
Brooklyn Center, Minn.  
August 2009

**GarRick Williams**  
Hazel Park, Mich.  
October 2009

## Children's Oncology Camp Foundation

### CAMP MAK-A-DREAM 2010 Board of Directors

*\* Executive Committee Members*

**\* Dee Dee Blaney**  
First American Title Co.  
of Montana

**Wayne Hiatt**  
Galusha, Higgins &  
Galusha

**\* Bob Homer**  
Bitterroot Motors

**Scott Huntley**  
Farmers State Bank

**KK Jense**  
Jense, Inc.

**Mike Juhola**

**\* Jordan Lind**  
Self-employed

**\* Doug McAlear**

**\* Will McCarthy**  
Worden Thane, PC

**Colleen Powers**  
Terry Payne & Co.

**\* Mike Tobiason**  
Anderson-Zurmuehlen

**Judy Wahlberg**  
ReMax Realty  
Consultants

**Tom Walsh**  
Montana Rail Link

**\* Anne Wright**  
St. Patrick Hospital &  
Health Sciences Center

### FOUNDATION STAFF

**Stuart Kaplan, M.D.**  
Executive Director

**Jennifer Benton**  
Director of Marketing &  
Special Events

**Beth Jones**  
Camp Director

**Shirley Hummer**  
Campus Director

**Erin Rome**  
Chef / Kitchen Manager

**Jake Wood**  
Facility Manager

**Julie Hiatt**  
Office Manager

**Jesse Mahugh**  
Administrative Assistant

**Anne Geisler**  
Upper Midwest Field  
Development Officer

# Special Events — 2010



## Hold Your Next Event at Camp Mak-A-Dream

Camp Mak-A-Dream may be the perfect place to hold your next group function. Our fully accessible facility sits on 87 beautiful acres in Gold Creek, Montana, and is available to outside groups for rental in the off-season, late August through May.

The main lodge is ideal for large group meetings or activities, seats 120 people comfortably for meals, and is available for day use or for multi-day events. For overnight stays, we have five lovely cabins, which each accommodate 12-24 people, as well as additional housing and meeting rooms in our health center building.

For photos and price information, please visit: [www.campdream.org](http://www.campdream.org). If you have questions, would like to arrange a tour or wish to inquire about renting the Camp facility, contact Shirley Hummer at (406) 549-5987 or e-mail: [shirley@campdream.org](mailto:shirley@campdream.org).

### Upper Midwest — Drinks & Dreams

April 21, Solera — Minneapolis

- ★ First fundraising event in our new outreach area — the Upper Midwest.
- ★ Reception including short program, hors d'oeuvres, cocktails & signature Camp drink.
- ★ For details and ticket information, visit: <http://campdream.eventbrite.com>

### Camp Mak-A-Dream Golf Tournament

May 20, The Ranch Club — Missoula, Mont.

- ★ Registration fee is \$125/person, \$500/foursome, or \$650/foursome plus hole sponsorship.
- ★ Entry includes golf and lunch, plus various contests and prizes.
- ★ Field is limited to the first 128 players to register and pay.
- ★ Corporate and hole sponsorships available, please contact us for more information.



Thanks to The Ranch Club for hosting and helping underwrite this event.

### Country Throwdown Tour

May — June, Multiple venues across the U.S.

- ★ Country music tour bringing some of today's biggest country artists to a city near you. Montgomery Gentry, Jamey Johnson and Oscar-nominated Ryan Bingham & The Dead Horses, just to name a few!
- ★ Country Throwdown Tour will give one dollar of each online ticket purchased to Camp Mak-A-Dream! (code: 01)
- ★ To purchase tickets or learn more, visit [www.countrythrowdown.com](http://www.countrythrowdown.com).



To help give back, The Country Throwdown Tour will give one dollar of each online ticket purchased to Camp Mak-A-Dream! If you plan to go to the show, you can help give back by entering promotional code or during online ticket check out. Pre-sale tickets will go on sale soon. Please check [www.countrythrowdown.com](http://www.countrythrowdown.com) frequently for updates, and to find a full band lineup and tour schedule. (Tour dates around the country in May and June)

### Upper Midwest — St. Paul Saints Game Day

June 13, St. Paul, Minn.

- ★ Proceeds from ticket sales for this game benefit Camp Mak-A-Dream.
- ★ Tickets available online at: [www.saintsgroups.com](http://www.saintsgroups.com) (password: dream).

### 9th Annual RATPOD Ride Around The Pioneers in One Day



June 26, Big Hole Valley, Mont.

- ★ 130-mile bicycle ride around the Pioneer mountains, starting and ending at The University of Montana Western in Dillon.
- ★ Riders pay a registration fee and are asked to raise at least \$10 in donations for Camp Mak-A-Dream.
- ★ Grand prizes awarded to the riders who raise the most money.
- ★ To sponsor a rider, make a general donation or learn more, please visit: [www.ratpod.org](http://www.ratpod.org).



### Glacier-Waterton Lake Jumping Project Summer 2010

- ★ Mark Ankerbauer, cancer survivor and park ranger, aims to jump in all 150+ named lakes in Glacier-Waterton National Parks (and has already checked 128 off that list).
- ★ His goal is to raise awareness of cancer survivorship & funds for Camp Mak-A-Dream.
- ★ Visit Mark's online fundraising page for more information or to donate at: [www.firstgiving.com/glacierlakejumps](http://www.firstgiving.com/glacierlakejumps).

## Montaqua / Town Pump Water Promotion

July-August, Town Pump locations across Montana

- ★ Purchase a bottle of Montaqua spring water at any Town Pump location in Montana during July and August and 10 cents of each purchase will be donated to Camp Mak-A-Dream.
- ★ Last year this promotion raised \$1,988. Montaqua would like to surpass that amount this year.
- ★ Get connected to the Montaqua lifestyle at [www.facebook.com/montaqua](http://www.facebook.com/montaqua).



## Walleye Benefit Fishing Tournament

August 10, Canyon Ferry Reservoir

– Helena, Mont.

Put on by Montana PikeMasters & Walleyes Forever

- ★ Walleye fishing tournament, entry fee \$60 per boat (100 boat limit).
- ★ Proceeds from tournament will be donated to Camp Mak-A-Dream.
- ★ For more information or to enter, visit: <http://cmadbenefit.bigskyoutdoors.net>.
- ★ Visit: [www.walleyesforever.com](http://www.walleyesforever.com) and [www.pikemasters.com](http://www.pikemasters.com) for more on these two clubs.
- ★ Tournament Director Peggy Lawyer can be reached at (406) 855-8432.

## Upper Midwest – Fun & Family Golf Event

August 21, Plymouth, Minn.

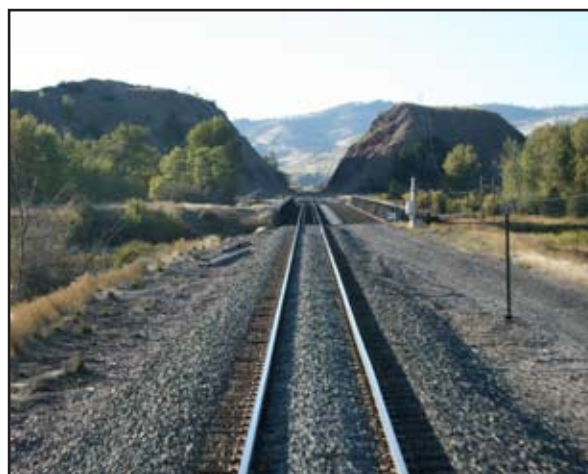
- ★ Day of family fun and golf at Eagle Lake Golf Center in Plymouth, Minn.
- ★ For details and registration information on this event, visit our Web site or e-mail: [anne@campdream.org](mailto:anne@campdream.org).

## Gold Creek Express – Train Trip to the Old West

October 2, Missoula to Camp Mak-A-Dream Facility

– Gold Creek, Mont.

- ★ Travel back in time via rail to Gold Creek, Montana, home of Camp Mak-A-Dream.
- ★ Ticket includes train transportation between Missoula and Gold Creek, dinner and activities.
- ★ For reservations or more information, call (406) 549-5987 or visit: [www.campdream.org](http://www.campdream.org).
- ★ Space is limited so please book your reservations early!



## Executive Director's Report

As the snow melts in Montana and the weather warms, we are getting very excited about our 15th anniversary at Camp Mak-A-Dream. The past year has brought lots of exciting changes: We opened our Upper Midwest office and welcomed Anne Geisler as the field development officer to lead our efforts there. We hosted a young adult brain tumor survivor conference (called the Heads Up Conference) that was so successful that this year we are going to expand this program into a second session for teen brain tumor survivors (called Teen Heads Up Conference). We are also thrilled that the new tree house zip line will be completed and ready to use for our first session this summer.

None of the progress made during the past 15 years could have been possible without our many partners highlighted in this issue of The Dreamcatcher — plus of course our donors, volunteers, seasonal staff members and other supporters like you. On behalf of our staff, and most importantly, our campers, thanks so much for your continuing support. We look forward to even bigger and better things to come.

*Stuart Kaplan, M.D.*

For additional information on any of these events, or for information on what you can do to support Camp Mak-A-Dream in your own community, please contact Jennifer Benton at (406) 549-5987 or e-mail: [jennifer@campdream.org](mailto:jennifer@campdream.org).

# RATPOD 2010 SPONSORS

### PLATINUM



partnerscreative

### GOLD



### SILVER

- Campus Drive • Five Valleys Urology • Good Food Store • Great Harvest Bread Co. • Merrill Lynch WS Group • Montana Surgical Associates • Montaqua
- Sapphire Physical Therapy • Western Montana Clinic • Western Montana Medical Association

### MAJOR IN-KIND SUPPORT FROM:

- Big Sky Brewing • Hands in Motion • Missoula Alliance Church • Missoula Nissan • Patagonia Outlet – Dillon • Subway – Dillon

## CAMP MAK-A-DREAM 2010 WISH LIST



Children's Oncology Camp Foundation

P.O. Box 1450

Missoula, MT 59806-1450

NON-PROFIT ORG

U.S. Postage

**PAID**

Permit #368  
Missoula, MT

### Art Studio

- Nylon, hemp, silk & leather cord for jewelry making
- Sharpie pens in assorted colors
- Glass beads
- Jewelry-making tools & findings
- Paint brushes (various sizes)
- Acrylic paint
- Fleece & silk material (1+ yd. pieces)
- Ziplock sealable bags (all sizes)

### Camp Activities & Programs / Decorations

- DVD movies (rated G and PG) & Wii games
- Costumes for dress-up
- Mascot costumes (adult sized)
- Disposable cameras
- Blank journal books (styles for boys & girls)
- Aluminum target-point arrows (archery)
- Horseback riding helmets (adult size - Lg.)
- Vest-style PFD (life jackets) - in good condition
- Pingpong paddles & balls
- Latex-free balloons (all sizes)
- New decks of playing cards
- New, plain, white cotton T-shirts (child & adult sizes) & pillowcases for tie-dyeing
- Portable CD players (boom box style)
- Small carnival prizes (for ages 6-17)
- Velcro catch ball sets
- Walking / hiking sticks
- Colored cloth napkins (60-100 per color)
- New candles - all sizes (sets of 10 per color preferred)
- White tea-light candles
- Table & theme decorations (sets for 8-10 lg. tables)
- New one-piece swimsuits (child & adult sizes)
- New board games
- Face paint (water-based)
- Duct, masking and clear packing tape
- Temporary tattoos (for children)
- Hawaiian ice shaver machine

### Medical Supplies

- New boxes of Band-Aids
- New bottles of sunscreen
- New cans of insect repellent

### Office Supplies & Equipment

- Shade tent / canopy structures (10'x10' or 12'x12')
- New digital camera (5+ MB)
- Laminator (preferably heat free)
- Color printer cartridges (for HP Laserjet 2840 printer)
- Card stock paper in assorted colors
- Nice, decorative 8.5"x11" paper
- White 8.5"x11" copy paper
- Photo paper
- Large easel paper tablets
- White boards, markers & erasers
- Name tags (clear plastic hanging, pin-on & sticker styles)
- Recordable blank CDs & plastic cases
- Mailing labels (Avery #5160, 30/page)
- Catalog-size mailing envelopes (9"x12" & 10"x13")
- Stacking storage containers with lids (large sizes)
- Markers & Sharpie pens (all colors & sizes)
- Unopened first aid kits
- Small alarm clocks
- Motion-activated night lights with bulbs
- Batteries (AA, AAA, D, 9V)

### Maintenance Equipment

- Leaf blower (gas powered)
- Rototiller
- Scaffolding set
- Oxygen & acetylene tanks (large, for cutting torch)

There are lots of everyday items needed at camp. If you would like to donate something from our wish list, you can drop it by our foundation offices in Missoula, or mail it to us at: Camp Mak-A-Dream, P.O. Box 1450, Missoula, MT 59806-1450. Donations may also be tax deductible. Please contact us at (406) 549-5987 for more information or with questions.



# CAMP MAK-A- DREAM

### Mail to:

Camp Mak-A-Dream  
P.O. Box 1450  
Missoula, MT 59806

Children's Oncology  
Camp Foundation  
is a 501(c)(3)  
nonprofit corporation.  
Contributions are  
tax deductible.

**Tax ID # 81-0472959**  
**Spring 2010 / Issue 22**

## Make a Donation/Join Our Mailing List

Help make a dream come true for a child or young adult with cancer.

Your Name: \_\_\_\_\_

Address: \_\_\_\_\_ E-mail address: \_\_\_\_\_

City/State/ZIP: \_\_\_\_\_ Phone #: \_\_\_\_\_

**Camperships:** I would like to donate \_\_\_\_ Campership(s) at \$500 each (sponsors one camper for one week).

Please include \_\_\_\_ engraved brick(s) at \$25 each. (One brick per campership donation, please.)

Name(s) to appear on brick(s): (Maximum of 30 characters) \_\_\_\_\_

**General Donations:** I would like to make a donation in the amount of \$ \_\_\_\_\_

**Memorials/Honorariums:** This gift is made in \_\_\_\_ honor \_\_\_\_ memory of \_\_\_\_\_

Given by \_\_\_\_\_

### Send keepsake card to:

Name(s): \_\_\_\_\_

Address: \_\_\_\_\_ Phone #: \_\_\_\_\_

City/State/ZIP: \_\_\_\_\_

**TOTAL AMOUNT ENCLOSED \$** \_\_\_\_\_

Paid by: Cash \_\_\_\_ Check \_\_\_\_ MasterCard \_\_\_\_ Visa \_\_\_\_ American Express \_\_\_\_ Discover \_\_\_\_

Account #: \_\_\_\_\_ Expires: \_\_\_\_\_

Signature: \_\_\_\_\_

**To donate online,  
please visit our  
Web site at  
[www.campdream.org](http://www.campdream.org).**